



① REMOVE EXTG. TREE



CONSULTING ENGINEER	DATE
DAVID L. JONES	08/04/2019
PROJECT	DC PROJECT # C1 18004
LOCATION	MOLALLA AVENUE PHASE 3 BEAVERCREEK ROAD TO OR 213
CLIENT	MOLALLA AVENUE
DATE	08/04/2019
BY	DAVID L. JONES
CHECKED BY	DAVID L. JONES

DC PROJECT # C1 18004
MOLALLA AVENUE PHASE 3 BEAVERCREEK ROAD TO OR 213
MOLALLA AVENUE
CLATSOP COUNTY

TREE REMOVAL PLAN

DATE	08/04/2019
BY	DAVID L. JONES
CHECKED BY	DAVID L. JONES



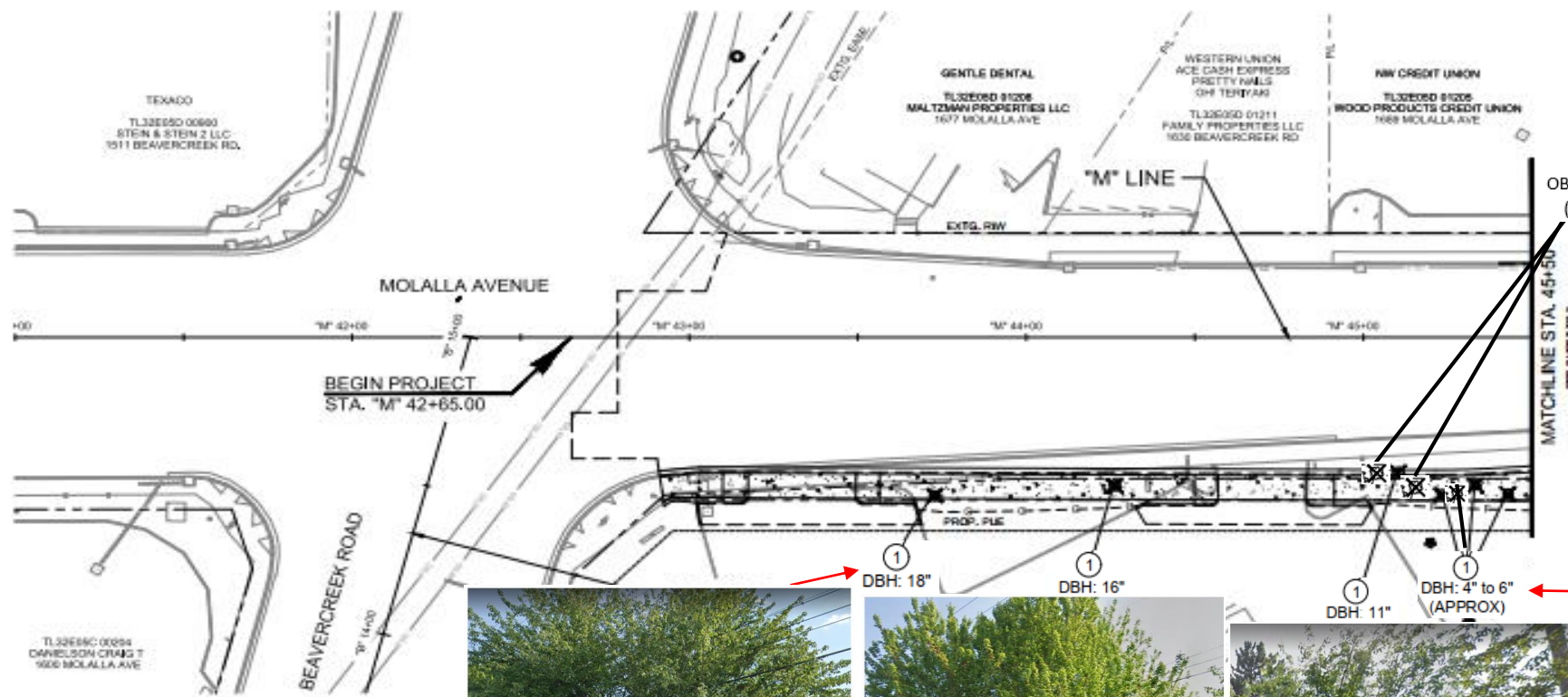
CITY OF CLATSOP COUNTY
PLANNING & COMMUNITY DEVELOPMENT
APPROVAL FOR CONSTRUCTION

APPROVED AS SHOWN
APPROVED AS NOTED

SIGNATURE
NAME
DATE

DATE: 08/04/2019
DC RECORD DRAWING

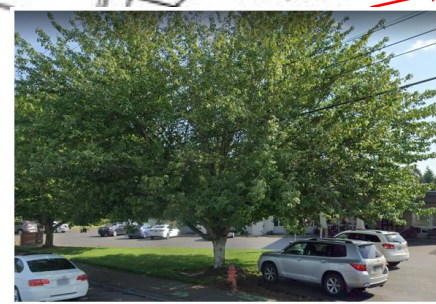
DRAWING NUMBER:
TR
SHEET X OF X



These 2 trees would have been required to be removed by Marquis new site development modification, though they are dedicating the R/W prior to the site development.



These trees would have been required be removed by Marquis new site development modification, though they are dedicating the R/W prior to the site development.



This tree removal would have been required by Marquis new site development modification, though they are dedicating the R/W prior to the site development. The City offered to wrap a sidewalk around the the tree in order to try to save it. This was declined by Marquis Management.



This tree removal would have been required by Marquis new site development modification, though they are dedicating the R/W prior to the site development.



This tree removal would have been required by Marquis new site development modification, though they are dedicating the R/W prior to the site development.

LEGEND	
✖	REMOVE DECIDUOUS TREE
✖	REMOVE CONIFEROUS TREE
○	PROTECT DECIDUOUS TREE
●	PROTECT CONIFEROUS TREE

1 REMOVE EXTG. TREE



CONSULTING ENGINEER	PROJECT NO.	DATE
P. J. JONES	18-004	09/04/2019
PROJECT NAME	CLIENT	DATE
BEAVER CREEK ROAD TO OR 213	LUCKY WILHELM	
CLACKAMAS COUNTY		

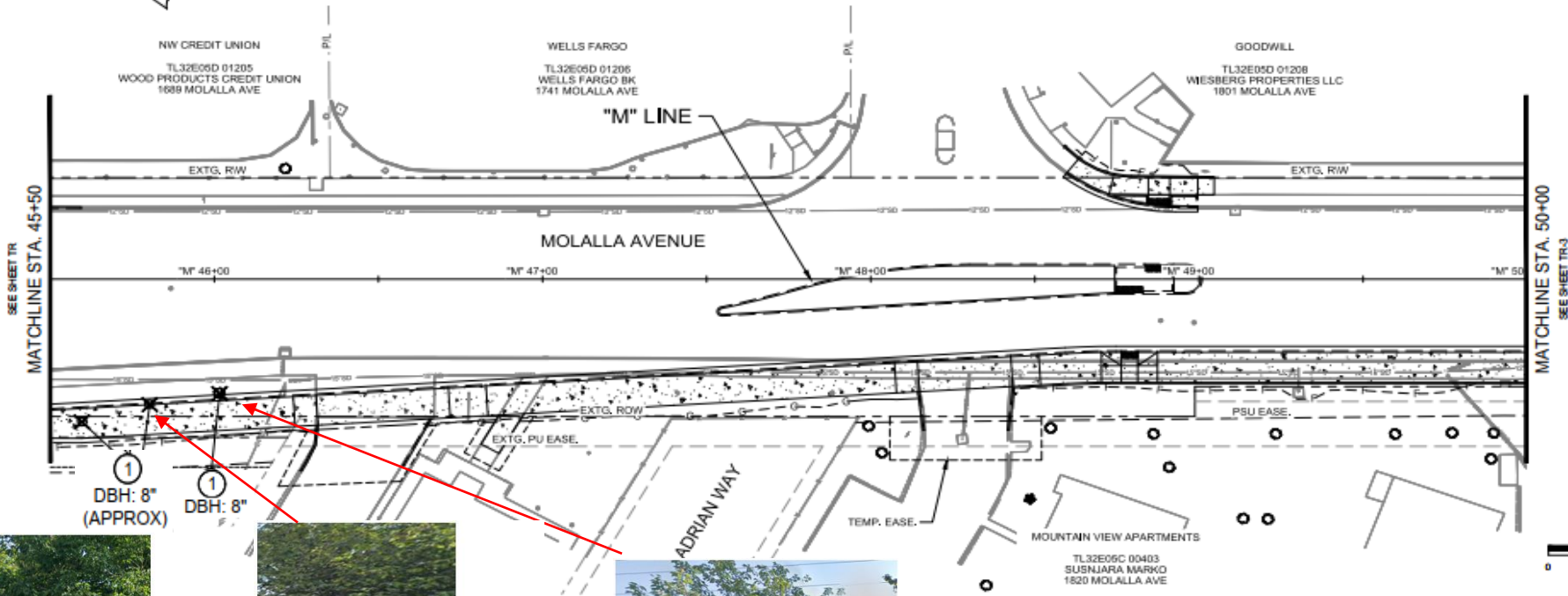
OC PROJECT # CI 18-004
MOLALLA AVENUE PHASE 3: BEAVER CREEK ROAD TO OR 213
MOLALLA AVENUE
CLACKAMAS COUNTY
TREE REMOVAL PLAN

REVISIONS

CITY OF OREGON CITY
PUBLIC WORKS DEPARTMENT
APPROVAL FOR CONSTRUCTION

APPROVED AS SUBMITTED
APPROVED AS NOTED IN RED

SIGNATURE
NAME
DATE
DATE: 09/04/2019
DC RECORD DRAWING:
DRAWING NUMBER:
TR-2
SHEET X OF X



This tree removal would have been required by Marquis new site development modification, though they are dedicating the R/W prior to the site development.



This tree removal would have been required by Marquis new site development modification, though they are dedicating the R/W prior to the site development.



This tree removal would have been required by Marquis new site development modification, though they are dedicating the R/W prior to the site development.

LEGEND

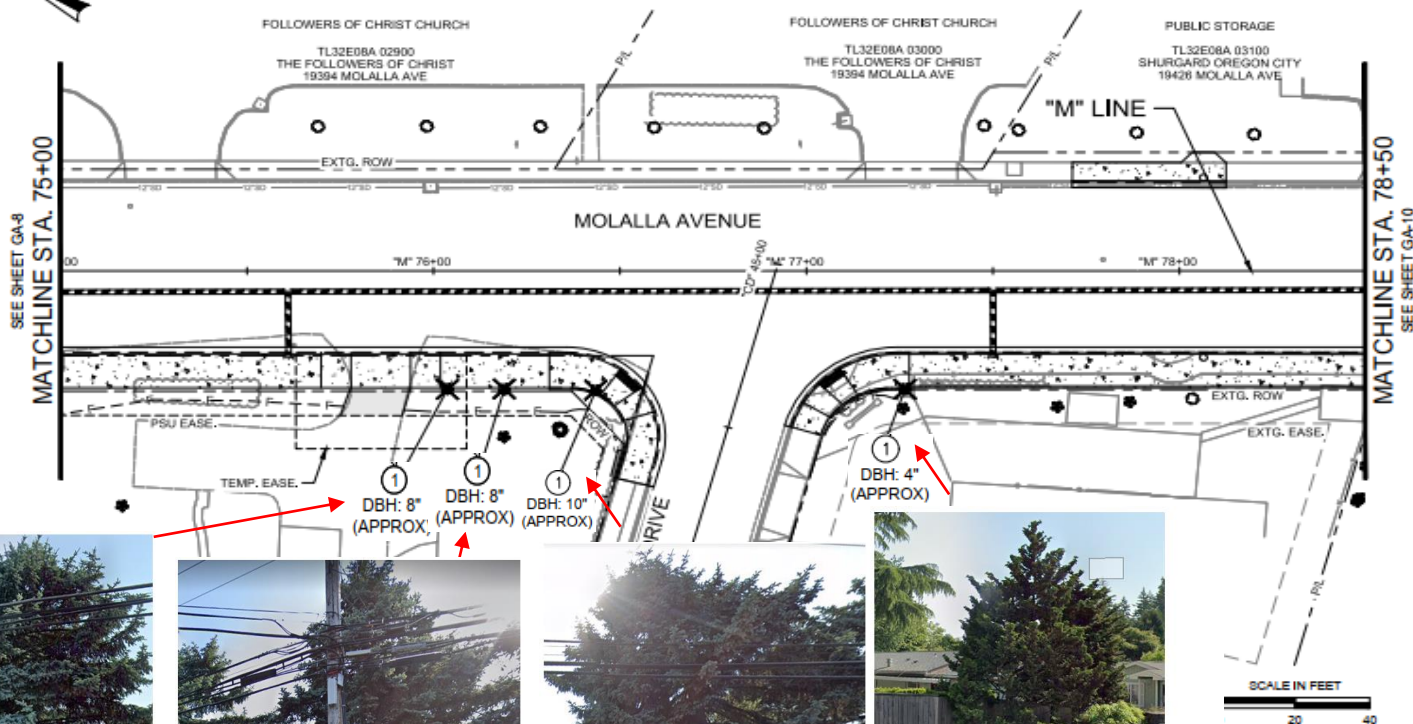
REMOVE DECIDUOUS TREE

REMOVE CONIFEROUS TREE

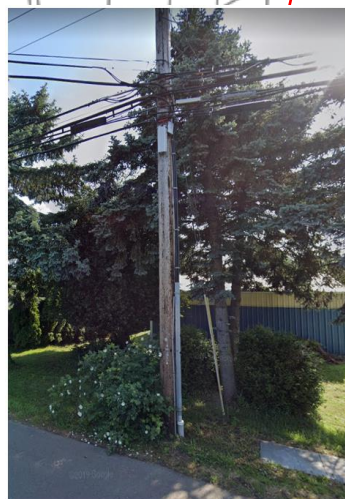
PROTECT DECIDUOUS TREE

PROTECT CONIFEROUS TREE

① REMOVE EXTG. TREE



This tree is to close to the new sidewalk



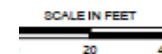
This tree is to close to the new sidewalk



This tree is to close to the new sidewalk



This tree is to close to the new sidewalk



LEGEND	
	REMOVE DECIDUOUS TREE
	REMOVE CONIFEROUS TREE
	PROTECT DECIDUOUS TREE
	PROTECT CONIFEROUS TREE



CONSULTING ENGINEERS	DATE	BY	CHECKED
1001, LLC Company	09/04/2019	W. Ball	L. Jones
PROJECT: 1001, LLC Company	09/04/2019	W. Ball	L. Jones
PROJECT: 1001, LLC Company	09/04/2019	W. Ball	L. Jones

DC PROJECT # C118-004
MOLALLA AVENUE PHASE 3: BEAVERCREEK ROAD TO OR 213
MOLALLA AVENUE
CLATSOP COUNTY

TREE REMOVAL PLAN

REVISIONS	DATE	BY	DESCRIPTION



CITY OF OREGON CITY
PUBLIC WORKS DEPARTMENT
APPROVAL FOR CONSTRUCTION

APPROVED AS SUBMITTED
APPROVED AS NOTED IN RED

SIGNATURE
NAME: _____
DATE: 09/04/2019

DC RECORD DRAWING:

DRAWING NUMBER:
TR-3
SHEET X OF X

1 REMOVE EXTG. TREE



CONSULTING ENGINEERS
L. JONES, LLC Company
577005
Oct 1, 2019
L. Jones
As shown

DC PROJECT # C118-004
MOLALLA AVENUE PHASE 2: BEAVERCREEK ROAD TO CR 213
MOLALLA AVENUE
CLACKAMAS COUNTY

TREE REMOVAL PLAN

REVISIONS



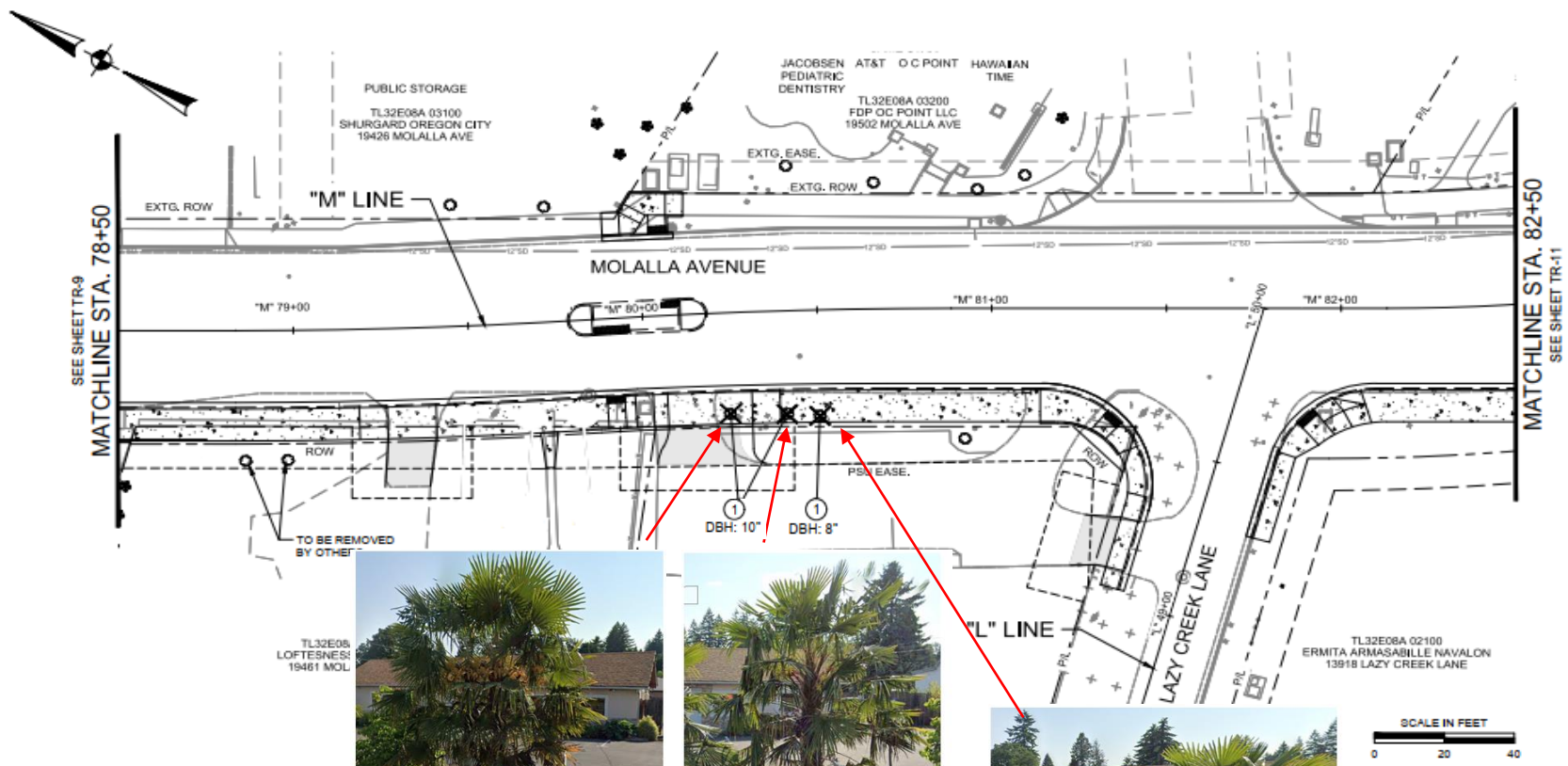
CITY OF OREGON CITY
PUBLIC WORKS DEPARTMENT
APPROVAL FOR CONSTRUCTION

APPROVED AS SUBMITTED
APPROVED AS NOTED IN RED

SIGNATURE
NAME: _____
DATE: 09/04/2019

DC RECORD DRAWING:

DRAWING NUMBER:
TR-4
SHEET X OF X



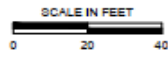
This Palm tree is to close to the new Sidewalk and within new driveway



This Palm tree is to close to the new sidewalk



This Palm tree is to close to the new sidewalk



LEGEND	
✕	REMOVE DECIDUOUS TREE
✕	REMOVE CONIFEROUS TREE
○	PROTECT DECIDUOUS TREE
✱	PROTECT CONIFEROUS TREE