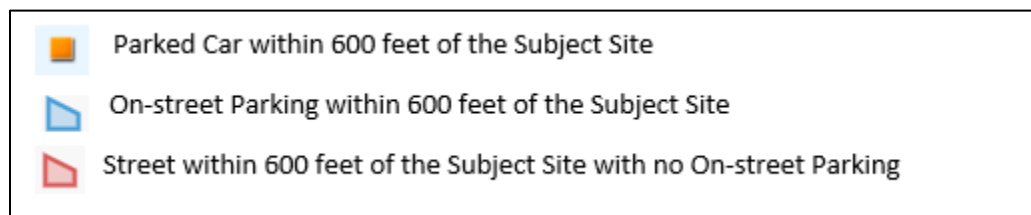


On-Street Parking Availability Analysis Prepared by Staff

The applicant did not submit a parking analysis of on-street parking within 600 feet of the subject site, therefore, staff has utilized Oregon City GIS aerial photographs from the past five years, the most recent Google aerial images, the most recent Bing aerial images, and the most recent Google Streetview images to demonstrate that on-street parking in the area is consistently available.

Source	Occupied On-Street Parking Stalls
Oregon City GIS 2018 Aerial Image	21
Oregon City GIS 2017 Aerial Image	26
Oregon City GIS 2016 Aerial Image	26
Oregon City GIS 2015 Aerial Image	20
Oregon City GIS 2014 Aerial Image	35
Bing Maps Aerial Image	12
Google Maps Aerial Image	27
Google Streetview	23
Average Number of Occupied On-Street Parking Stalls	23.75



Oregon City GIS 2018 Aerial Image
21 occupied on-street parking spaces



Oregon City GIS 2017 Aerial Image
26 occupied on-street parking spaces



Oregon City GIS 2016 Aerial Image
26 occupied on-street parking spaces



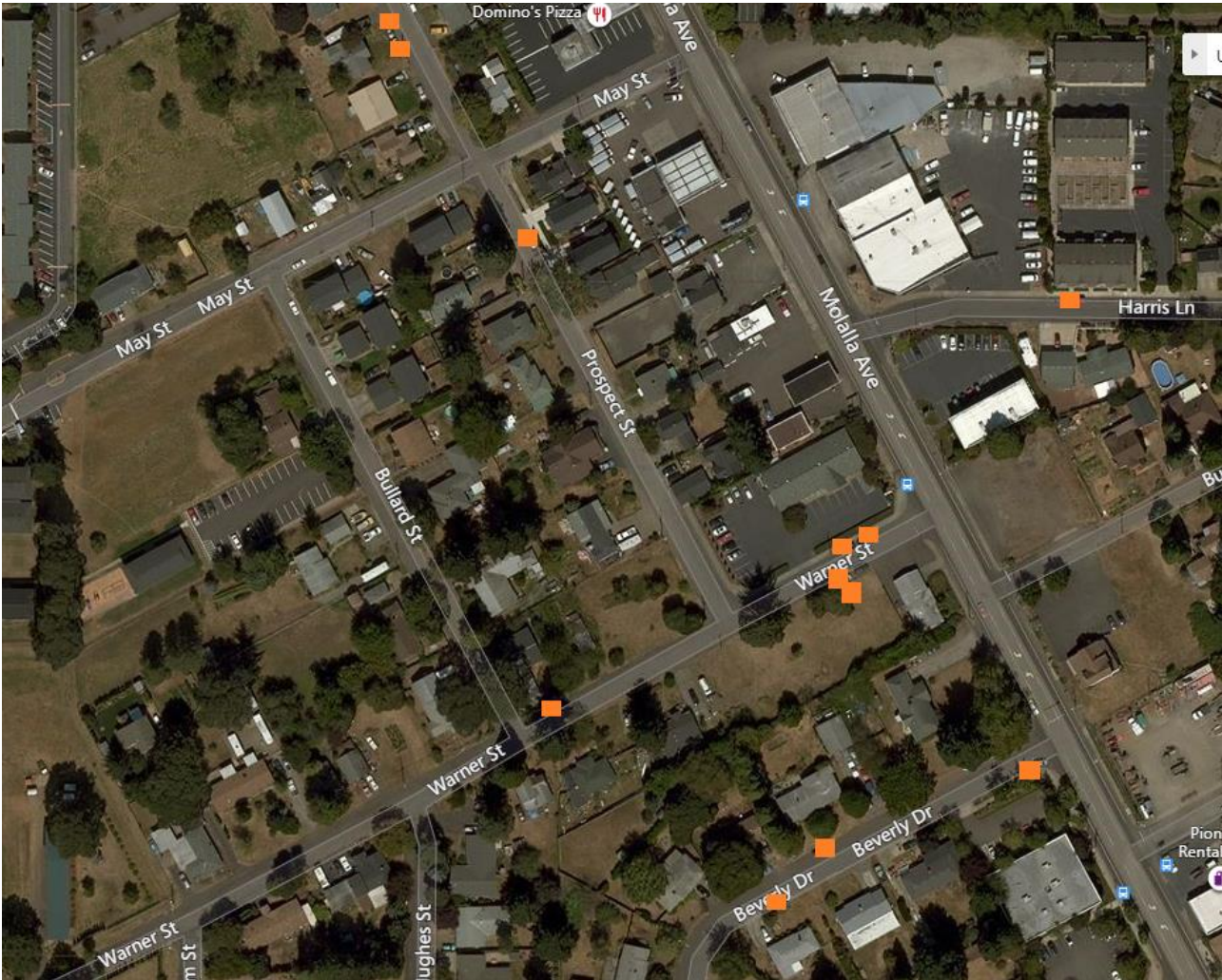
Oregon City GIS 2015 Aerial Image
20 occupied on-street parking spaces



Oregon City GIS 2014 Aerial Image
35 occupied on-street parking spaces



Bing Maps 2019 Aerial Image
12 occupied on-street parking spaces



Google Maps 2019 Aerial Image
27 occupied on-street parking spaces



Most Recent Google Streetview Images (2016-2018)

23 Occupied On-Street Parking Stalls

Warner Street



Prospect Street



Prospect Street and May Street (0 occupied on-street spaces)



May Street (facing west)



May Street (facing east)



Harris Lane



Warner Street and Hughes Street



Beverly Drive

