

Robert Libke Public Safety Building

Pricing Summary Sheet

September 13, 2019

Evidence Storage: Spacesaver HD M/A Mobile System	\$ 88,898.92
-2 fixed rows & 5 carriages Sufficient storage for 7-10 yrs.	
-Waist-high floor lock for secondary security for gun storage	
Personnel Lockers: Spacesaver FreeStyle Lockers	\$ 99,561.54
-60 Lockers w/drawers and benches, combo locks, body armor Drying rack, shelf & garment hanger	
-Includes Plug & Play power	@ \$ 6,387.00
-Includes 3 Additional Bailiff Lockers: 24" w x 24" d x 72" h w/top shelf & garment hanger, 3 hook assembly and combination lock	@ \$ 3,761.10
Duty Bag Lockers: Spacesaver FreeStyle Lockers	\$ 36,824.31
-16 (4 tier) lockers 94" h x 24" w x 30" d, mesh doors, Hasp lock, -sloped top, field cut power openings	
Evidence Lockers: Spacesaver Evidence Lockers	\$ 42,752.46
-4 lockers with 33 openings and 1 mail slot; 1 locker with 3 openings and -6 refrigerated openings.	
Bike Room Lockers: Spacesaver FreeStyle Lockers	
-(2) 5 tier lockers 96" h x 24" w x 30" d, mesh doors, hasp locks	\$ 5,012.47
Total:	\$ 273,049.97
Manufacturer's bundle discount (purchase all Spacesaver products listed above)	<u>(-\$ 8,320.00)</u>
Sub-total:	\$ 264,729.97
Anchor Engineering for Evidence Storage:	<u>\$ 1,950.00</u>
Total Investment	\$ 266,679.70

These items are provided as per the Sourcwell Contract Vendor ID# 031715-KII for Sourcwell Member ID# 80668 City of Oregon City.

General Contractor: Oregon 88704 Washington SPACESI110JO



September 12, 2019

To: Chief James Band
Oregon City Police Department

Overview: Deliver and install a new Spacesaver High Density Mobile Storage System for your long-term Evidence Storage Room 147 @ the new Robert Libke Public Safety Building on the Sourcewell contract #031715-KII for Member #80668 City of Oregon City, Oregon.

Mechanical Assist (MA) Mobile System: Footprint dimensions 22'-2" W x 40'-1" L

- 1 fixed row with (5) 16" d x 42" w x 143-7/16"h sections of shelving (U7) for gun storage with weapons rack III & (1) 16" d x 48" w x 143-7/16"h section of shelving (U6) General Storage.
- 1 carriage with 10 back/back shelving sections @ 18" d x 42" w x 143-7/16"h (U5) & 2 back/back shelving sections @ 18" d x 48" w x 144-7/16"h (U4), **each section has a metal back panel.** Red Box Evidence Storage.
- 1 carriage with 10 back/back shelving sections @ 18" d x 42" w x 143-7/16"h (U5) & 2 back/back shelving sections @ 18" d x 48" w x 144-7/16"h (U4) Red Box Evidence Storage.
- 2 carriages; each with 2 back/back shelving sections @ 24" d x 30" w x 143-7/16"h (U1), 4 back/back shelving sections @ 24" d x 42" w x 143-7/16"h (U2), 6 back/back shelving sections @ 24" d x 48" w x 143-7/16" H (U3) Bulk Storage.
- 1 carriage with 2 back/back shelving sections @ 24" d x 30" w x 143-7/16"h (U1), 4 back/back shelving sections @ 24" d x 42" w x 143-7/16"h (U2), 2 back/back shelving sections @ 24" d x 48" w x 143-7/16"h (U3) & 4 back/back sections @ 24" d x 48" w x 143-7/16"h (U8). Bulk Storage & Bike Storage (U8).
- 1 fixed row with (1) 24" d x 48" w x 144-1/8"h shelving section (WS3), (1) 24" d x 60" w x 144-1/8"h shelving section (WS2) & (2) 24" d x 72" w x 144-1/8"h shelving sections (WS1). Oversized Storage.
- Each carriage entry has a mechanical assisted 3 spoke ergonomic handle with color coded safety locking pin.
- Waist-high lock on the carriage with the metal back panels.
- Front end laminate end panels; **Color: Black**
- See drawing for levels per shelving sections.
- 152'-4" of recessed anti-tip seismic rail; no deck required.
- **Capacity: 42 long rifles, 600+ handguns/knives in boxes, 600+ red storage boxes, 584 ft of bulk storage, 8 bikes & 126 ft of oversized storage.**
- Color: Standard Spacesaver colors: **Designer Grey**
- Spacesaver Certified installation at prevailing rate.
- Adequate space to add 4 carriages for future storage needs. (costs not included at this time).

Investment: Includes material, freight, drayage, Certified Spacesaver Installation, jobsite cleanup and first year Service/Maintenance Plan..... \$ 88,898.92

Estimated anchoring engineering costs..... \$ 1,950.00

Total Investment.....\$ 90,848.92

Permit costs are not included in this quote.

Standard Terms: 35% down, 35% when materials arrive in the Spacesaver Specialists warehouse and remaining balance due upon project completion. Standard working hours are Monday – Friday 7:00 AM – 5:00 PM. Preferred payment cash/check; VISA/MC accepted with a 3.75% additional fee.

Spacesaver equipment is warranted for the lifetime of the structural frames. All other equipment and components are warranted for five year, with labor covered for 1 year.

Respectfully submitted by

Doug Miller

Public Safety Specialist

503-612-2609



9.12.19

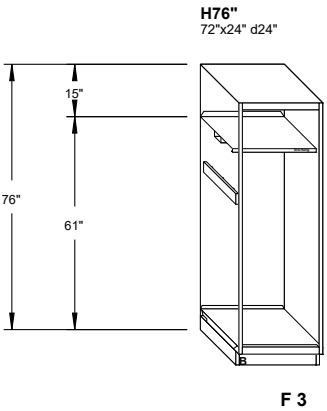
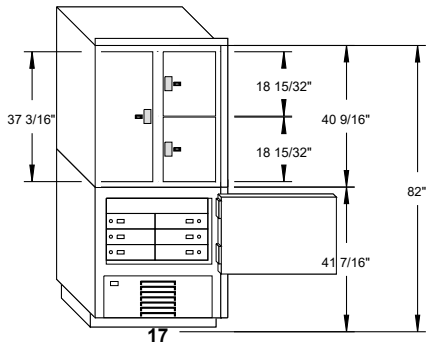
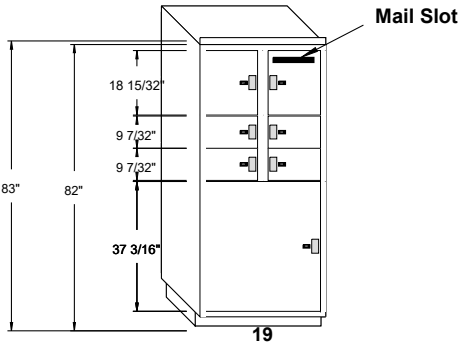
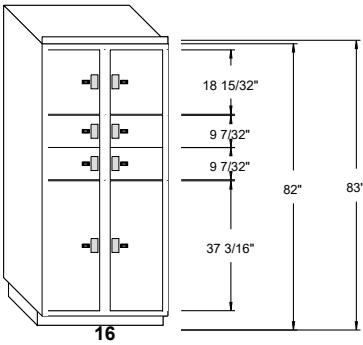
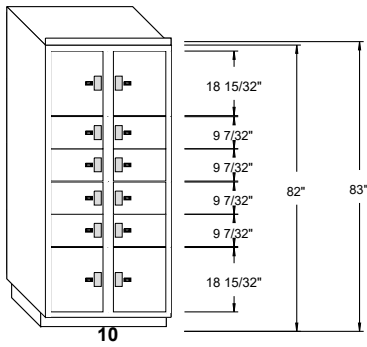
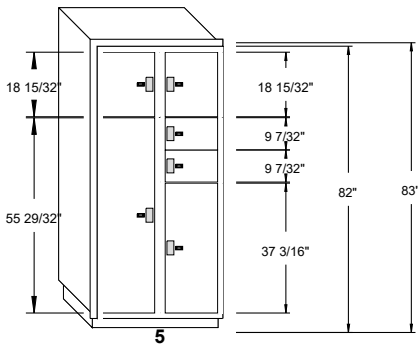
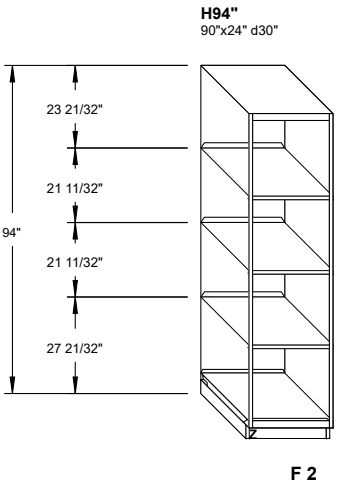
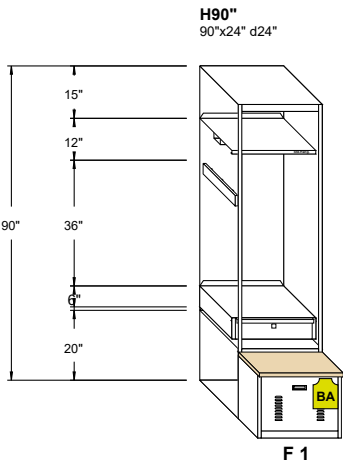
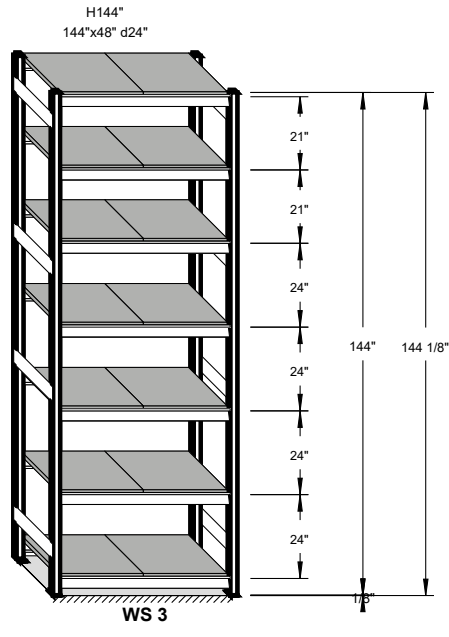
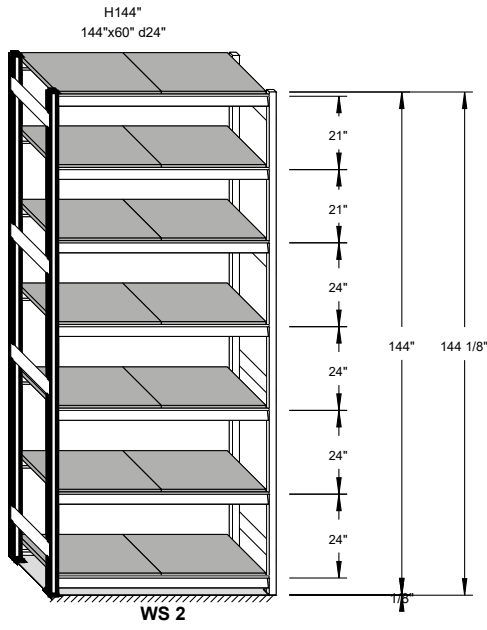
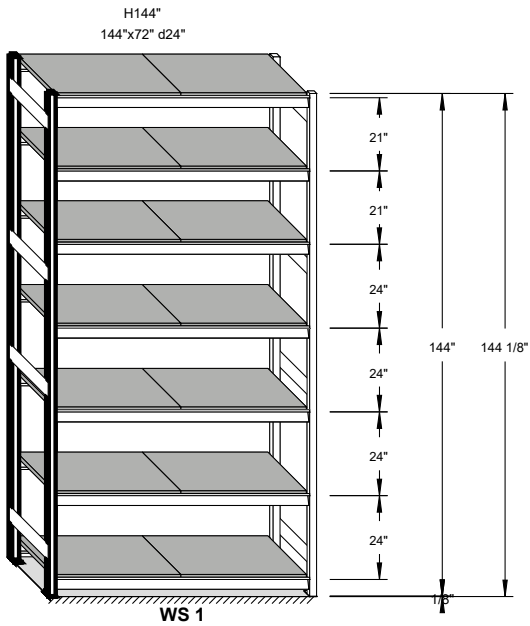
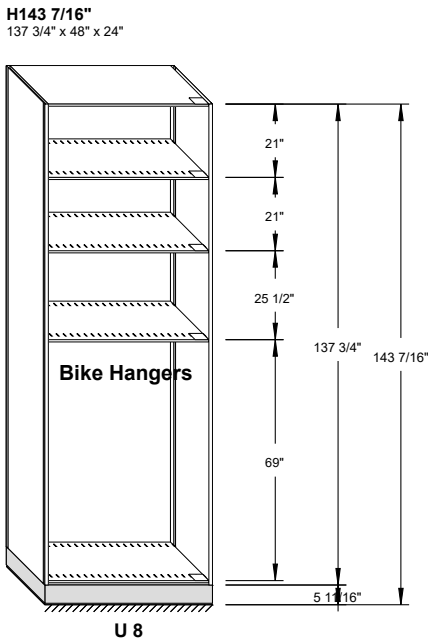
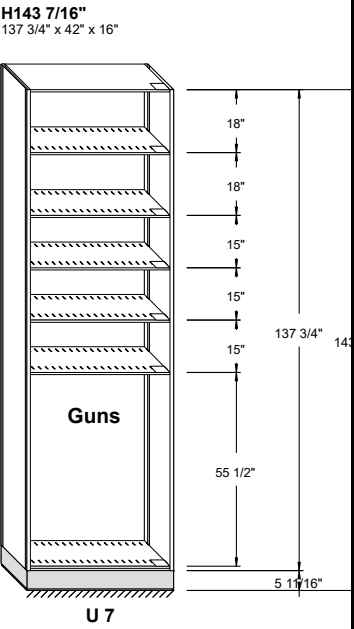
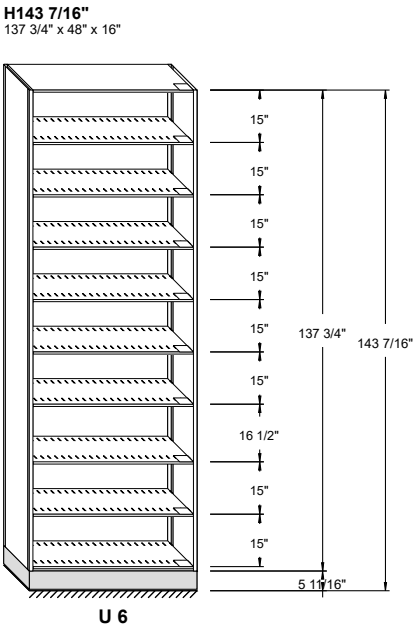
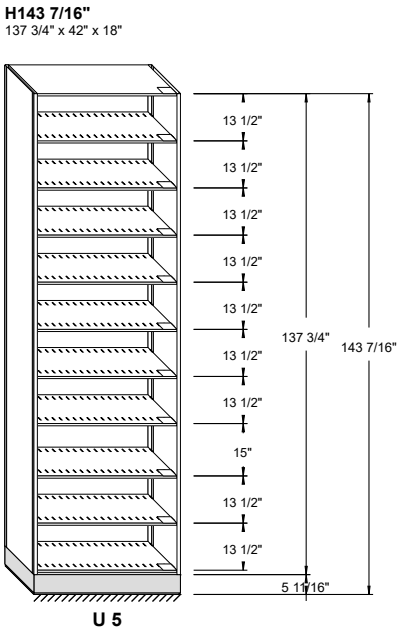
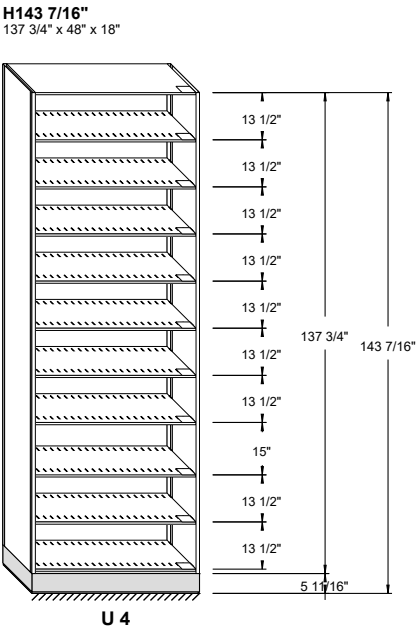
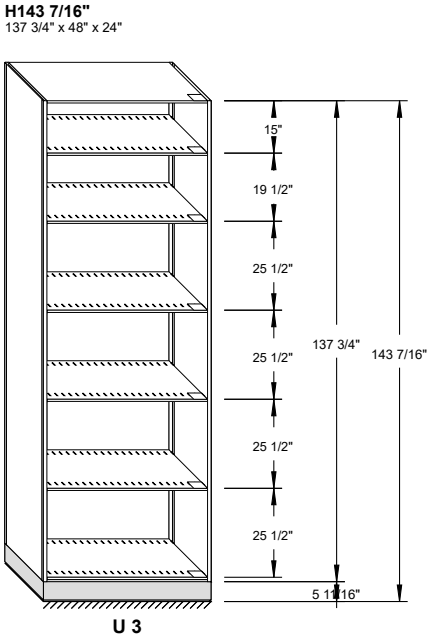
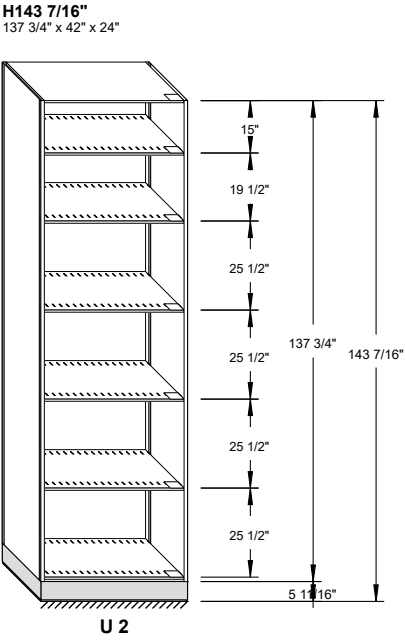
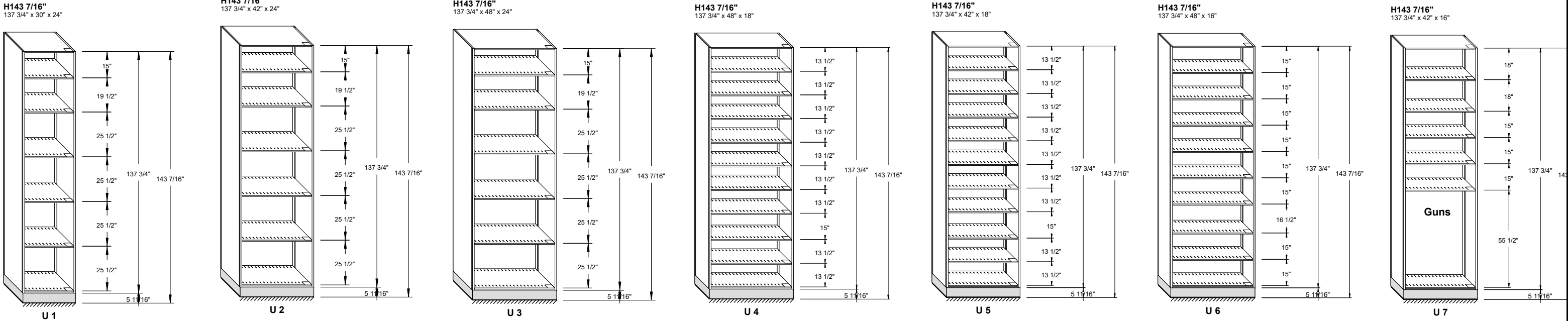


Spacesaver Specialists, Inc.

9730 SW Herman Road • Tualatin, Oregon 97062 • Tel 503.924.4100 • Toll free 800.456.2066 • Fax 503.924.4114

General Contractor, OR: 88704 • WA: SPACES1110JO

www.storageplanning.com



Waist - High Lock

EVIDENCE
STOR.
147

TV

Rev level:
Date Printed: 06/25/2019
Last Saved: 06/25/2019
Drawn by: Jim McCord
Salesperson: MILLER, DO
Project Name: Oregon Ci
Project #: Spacesaver Evi
Scale 1/4" = 1'

Spacesaver Corporation
1450 Janesville Avenue
Fort Atkinson, Wisconsin
53538-2798 USA
PH: 920-563-6362 FAX: 920-563-2702
www.spacesaver.com

TECH DATA

CARRIAGE SYSTEMS

Waist-High Lock

Spacesaver's waist high lock with face panel mounted convenience and a key controlled dead bolt type mechanism, provides security for materials stored on mechanical assist and manual and modular mobile systems.

BENEFITS

1. The waist high lock meets HIPAA requirements for personal information security.
2. Supervisor controlled key is removable in either the locked or unlocked position. This provides limited access and increased security.
3. The position of the lock can be on the left, center or right side of the face panel. This provides greater flexibility for system configuration.
4. Lock handle is at a height easily accessible for people with permanent or temporary disabilities.
5. The handle provides a positive detent in both the locked and unlocked position. This assures the user the lock has been activated.

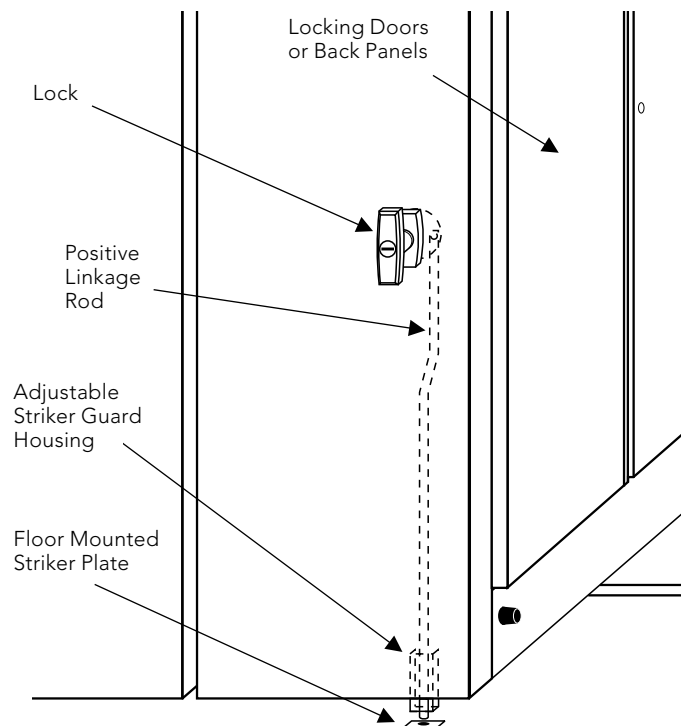
DESIGN AND CAPABILITIES

For overnight security or controlled access around the clock, Spacesaver's waist high lock restricts access to stored media by locking carriages in a compacted configuration. It can be used to lock all of a system's aisles closed, or to secure one or more selected aisles.

A handle located at waist level on the system's face panel is rotated 1/4 of a turn to engage and disengage the cam latch mechanism, and a supervisor controlled key is used to unlock it.

APPLICATION

Waist high locks are available on all Spacesaver mechanical assist and manual control carriages that have HPL/LPL face panels or steel end panels.



TECHNICAL SPECIFICATIONS

WAIST HIGH LOCK: **Grout Rail Systems**

All carriages shall be equipped with a waist high lock mounted 28" (711 mm) from the base of the face panel as indicated on the drawings. Lock shall have 3/8" (9.5 mm) positive linkage straight rod design that interlocks with a floor mounted striker plate. Over center spring loaded cam latch mechanism shall provide positive positioning in both the locked and unlocked positions. Handle shall have 1/4 turn operation with key removable in both positions and bright chrome finish. Striker mechanism shall have an adjustable striker guard housing assembly.

WAIST HIGH LOCK: **Non-Grout Rail Systems**

Each starter carriage shall be equipped with a waist high lock mounted 28" (711 mm) from the base of the face panel as indicated on the drawings. Lock shall have 5/8" (16mm), two-piece rod design that interlocks with a 5/8" (16mm) opening in the center of the rail. The interlock opening shall be field drilled by the installer.

WAIST HIGH LOCK: **Both Systems**

Over center spring loaded cam latch mechanism shall provide positive positioning in both the locked and unlocked positions. Handle shall have 1/4 turn operation with removable key in either position.

* Specifications subject to change.



Spacesaver Corporation
1450 Janesville Avenue
Fort Atkinson, WI 53538-2798
1-800-492-3434
www.spacesaver.com



KI
1330 Bellevue Street
P.O. Box 8100
Green Bay, WI 54302-8100
1-800-424-2432
www.ki.com

Spacesaver Corporation is a division of KI.

KI and Spacesaver are registered trademarks of Krueger International, Inc.

Spacesaver is a registered trademark of Spacesaver Corporation.

© 2013 KI and Spacesaver Corporation. All Rights Reserved. SSC/SSC WaistHighLock_0813_tech



September 12, 2019

To: Chief James Band
Oregon City Police Department

Overview: Deliver and install a total of 60 Spacesaver FreeStyle Personnel Lockers in the Open Locker room at the new Robert Libke Public Safety Building on the **Sourcewell contract #031715-KII** for **Member #80668 City of Oregon City, Oregon.**

Spacesaver FreeStyle Locker Details: 60 lockers

- Locker dimensions overall @ 24" W x 90" H x 36" D
- 60 lockers with an 18"h base drawer and hardwood sitting bench
- Base drawer body armor drying rack
- Top shelf with garment hanger
- 3 hook assembly
- Internal drawer with lock located near bottom of locker
- Combination locks; Master key provided
- Number tag.
- Trim included.
- Color: Spacesaver standard colors. **Cottonwood**
- Spacesaver Certified installation at prevailing rate.

Investment: Include new material, freight, drayage, Spacesaver Certified Installers and job site cleanup..... \$ 89,413.44

Adder: Plug & Play Power with (1) 2 plug outlet..... \$ 6,387.00

Adder: 3 Additional lockers for the Bailiffs (24" W x 72"H x 24" D) with top shelf and garment hanger, 3 hook assembly & combination lock \$ 3,761.10

Total Investment with adders..... \$ 99,561.54

Engineering & permits not included in this quote.

Terms: 35% down, 35% when materials arrive in Spacesaver Specialists warehouse and remaining balance due upon completion of project. Standard working hours are Monday-Friday 7:00 AM- 5:00 PM. Preferred payment cash/check; VISA/MC accepted with a 3.75% additional fee.

Spacesaver equipment is warranted for the lifetime of the structural frames. All other equipment and components are warranted for five years, with labor covered for 1 year.

Respectfully submitted by

Doug Miller

Public Safety Specialist

503-612-2609

9.12.19



Spacesaver Specialists, Inc.

9730 SW Herman Road • Tualatin, Oregon 97062 • Tel 503.924.4100 • Toll free 800.456.2066 • Fax 503.924.4114

General Contractor, OR: 88704 • WA: SPACES1110JO

www.storageplanning.com

FreeStyle®

PERSONAL STORAGE LOCKER

INFO SHEET

STORAGE SYSTEMS

Make it up as you go.

Finally there's a locker system that adapts as fast as you do. Sizes that fit your space. Configurations that meet your demands. Accessories that change with your needs. **The FreeStyle™ personal storage locker** is the tough, adaptable, long-term solution to your personal storage requirements.

STANDARD FEATURES:

- **Ability to reconfigure, on-site, throughout the life of the locker**
- Adjustable shelf with integral garment hanger
- Industry's strongest doors, with 18-gauge double-wall, welded box construction
- Air extraction ready – engineered to promote proper air flow within the locker
- Electrical ready – add duplex outlets to lockers at any time
- Hang items like duty belts or clothing on the interior door panel, by utilizing integrated peg board holes
- Durable powder-coat paint finish in numerous standard colors
- 9.5 or 13" deep hardwood butcher block bench on bench drawer units
- 200 lb. capacity bench and external access drawers
- Welded 18-gauge cabinet construction, with reinforced corners for added rigidity

AVAILABLE ACCESSORIES:

Unlike other personal storage systems that offer a limited range of options, FreeStyle is an all-new design with an all-new philosophy: Let the locker conform to the demands of the user. Therefore, Spacesaver's menu of accessories is robust and flexible – meaning we offer **the most useful accessories, helping you reach your storage goals.**

- | | | | |
|---|---|---|---|
| <ul style="list-style-type: none"> • Modular electrical components provide duplex outlets for powering and charging electronic devices • Adjustable, full-width shelves: plain, heavy-duty or louvered • Interior locking security compartment | <ul style="list-style-type: none"> • File storage components • Extra hooks • Double-hook kit, for hanging and drying body armor • Internal drawers 6" and 9" heights, with and without lock • Rubber shelf mat | <ul style="list-style-type: none"> • Weapons storage components – safely and securely store all types of firearms • Exclusive EZ-Rail™ accommodates plastic storage bins and slat wall accessories • Body armor ventilation rack | <ul style="list-style-type: none"> • Door mounted clipboard/document pocket • Adjustable three-hook bracket • Molded rubber boot tray • Magnetic mirror • Trim options • Color options • Continuous sloped tops rack |
|---|---|---|---|



**One locker.
Multiple applications.
Endless options.**

FreeStyle®

PERSONAL STORAGE LOCKER

Make it up as you go.

FREESTYLE™ PERSONAL STORAGE LOCKERS ARE AVAILABLE IN THE FOLLOWING DIMENSIONS:

- Widths: 12", 15", 18", 24", 30", 36", 42"
- Depth: 18", 24", 30", 36"
- Heights: 66", 72", 84", 90", 96"

WITH THE FOLLOWING LOCK OPTIONS:

- No lock (hasp only for padlock)
- Keyed lock with master keys and "slam-lock" feature
- Combination lock with master keys and "slam-lock" feature
- Digital Lock

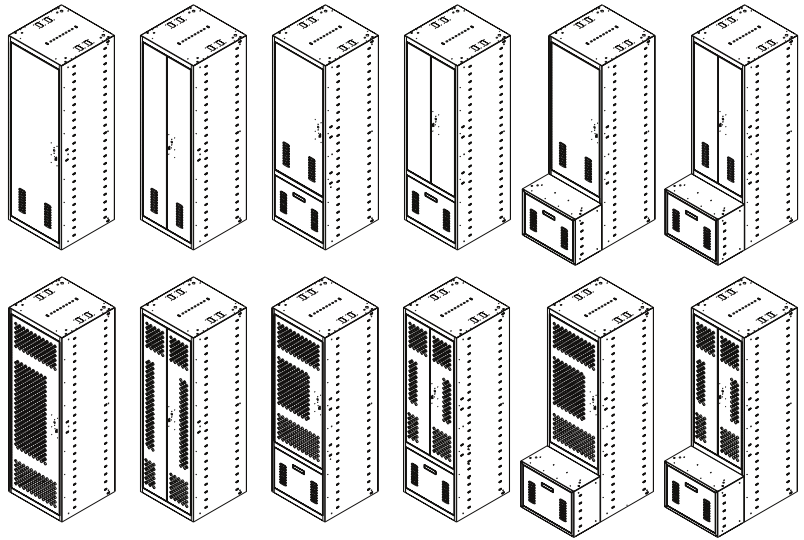
WITH THE FOLLOWING DOOR OPTIONS:

- Single door* (available on 12", 15", 18", 24", and 30" wide units)
- 2, 3 or 4-tier doors*
- Double door* (available on 24", 30", 36", and 42" wide units)

WITH THE FOLLOWING DRAWER OPTIONS:

- No drawer / full-height door
- 18" high external access drawer
- 18" high bench drawer

* plain or diamond perforated doors

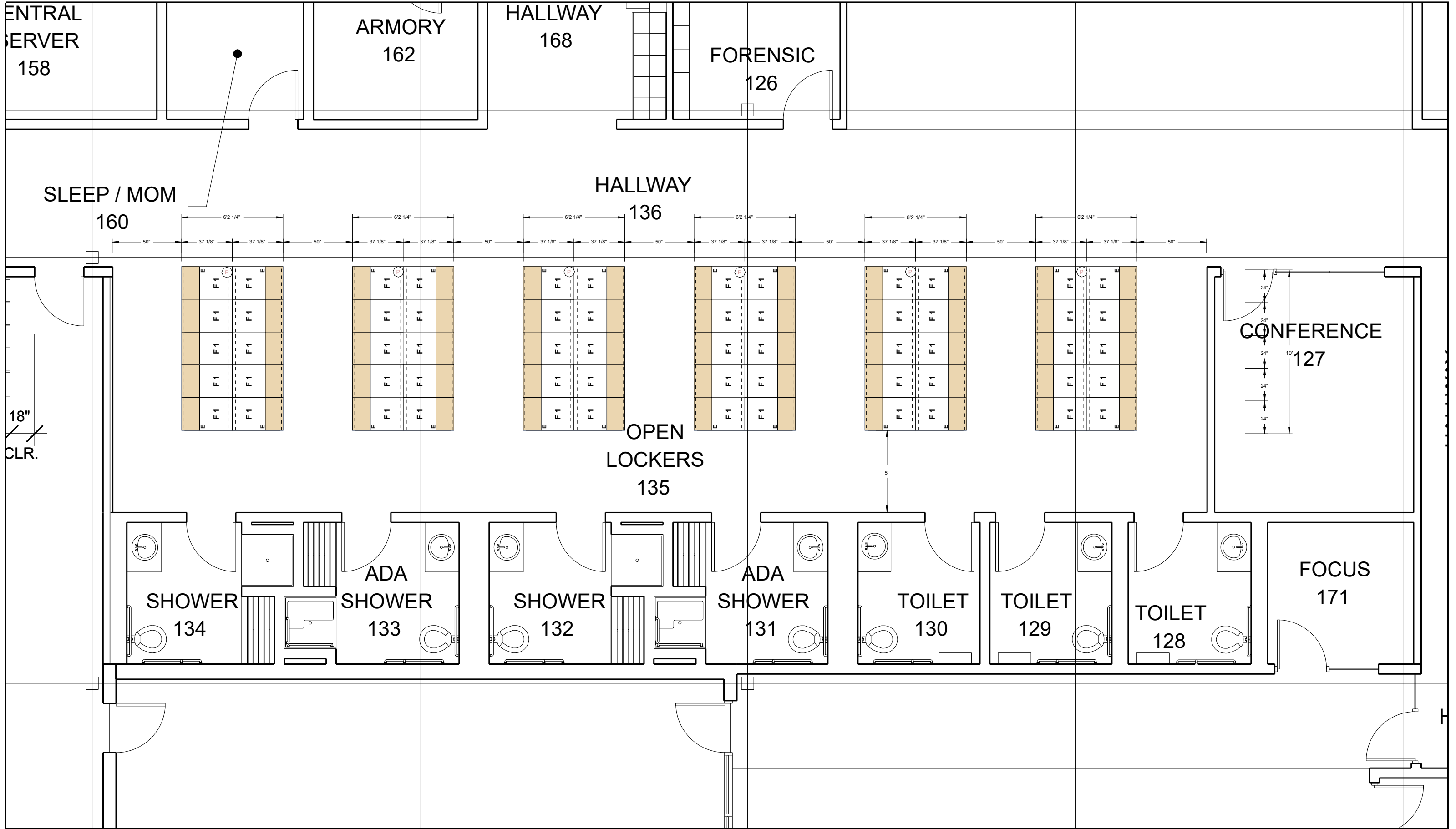


Spacesaver Corporation
1450 Janesville Avenue
Fort Atkinson, WI 53538-2798
1-800-492-3434
www.spacesaver.com



KI
1330 Bellevue Street
P.O. Box 8100
Green Bay, WI 54302-8100
1-800-424-2432
www.ki.com





ELEC. /
MECH
217

6' 0 3/8"
24"
24"
24"

F 3

F 3

F 3

EDS

24"

JUDGES
CHAMBERS
214

BREAK ROOM
218

IDF/TECH.
220

ROOF ACCESS LADDER

September 13, 2019

To: Chief James Band
Oregon City Police Department

Overview: Deliver and install a total of 16 each 4-Tier Spacesaver FreeStyle Duty Bag Storage Lockers in the Officer Storage 173 at the new Robert Libke Public Safety Building on the **Sourcewell contract #031715-KII for Member #80668 City of Oregon City, Oregon.**

Spacesaver Duty Bag Locker Details: 64 total openings.

- Locker dimensions overall @ 24" W x 90" H x 30" D
- 4 tier openings; 1 @ 23 21/32"H, 1 @ 21-11/32"H, 1 @ 21 21/32"H & 1 @ 23 11/32"H
- 4" base
- Mesh doors
- Hasp lock, **Locks provided by others**
- Sloped tops
- Number tag
- Trim included.
- Spacesaver Specialists installers to field cut each locker back opening for the power outlet access
- Color: Spacesaver standard colors. **Cottonwood**
- Spacesaver Certified installation @ prevailing rate.

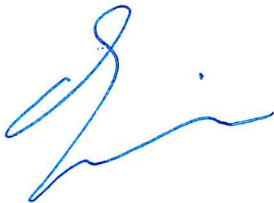
Investment: Include new material, freight, drayage, Spacesaver Certified Installers and job site cleanup..... **\$ 36,824.31**

Engineering & permits not included in this quote.

Terms: 35% down, 35% when materials arrive in Spacesaver Specialists warehouse and remaining balance due upon completion of project. Standard working hours are Monday-Friday 7:00 AM- 5:00 PM. Preferred payment cash/check; VISA/MC accepted with a 3.75% additional fee.

Spacesaver equipment is warranted for the lifetime of the structural frames. All other equipment and components are warranted for five years, with labor covered for 1 year.

Respectfully submitted by Doug Miller Public Safety Specialist 503-612-2609



9.13.19



INFO SHEET

GEAR & DUTY BAG LOCKERS

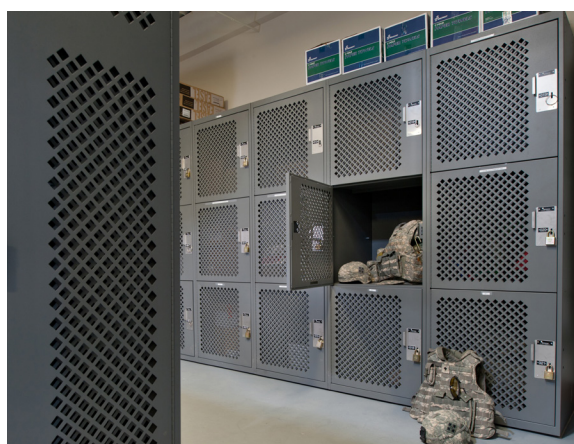
Keep Equipment Safe and Accessible.

When it comes to the daily tasks of law enforcement, time is precious—and when officers need to move quickly, they can't be held up by equipment that's hard to locate. At the same time, this gear also needs to be kept secure when not in use. Spacesaver's Gear and Duty Bag Lockers are an ideal way to create a secure space to store duty bags and other equipment that's needed in the field. These lockers keep gear out of the locker room and in an area where it's most accessible.

The rugged, all-steel storage cabinets are available with a variety of door type and lock options, and are created in a broad selection of sizes and configurations. Numerous design options—sloped tops, trim kit options, and the choice of surface or recessed mounted can be tailored depending on your department's needs.

FEATURES:

- Made in the U.S.A.
- Rugged steel construction
- Corner gussets for added rigidity
- Durable textured powder coat paint – variety of colors available
- Doors available with diamond perforated mesh for ventilation and visibility (solid or louvered doors also available)
- Box construction double thickness doors for unmatched strength and rigidity
- Stainless steel lock plate and handle with optional locker number plaque
- Four lock types available: Hasp only (for padlock), keyed, combination, or electronic
- Design Options: Sloped tops, trim, and surface or recessed mounted





Configurations To Meet Your Demands.

Gear and duty bag lockers are an ideal way to create secure storage spaces for equipment. With a plethora of available sizes, configurations, and options, gear bag lockers offer the flexibility you need to meet all your duty storage requirements.

AVAILABLE SIZES:

- Width: 12, 15, 18, 24, 30, 36, or 48"
- Depth: 12, 15, 18, 24, 30, or 36"
- Height: 72, 84, 90, or 96"
- Single and multi-tier units available
- Other sizes available - Contact Spacesaver

AVAILABLE LOCK OPTIONS:

- Keyed Lock
- Combination Lock
- Electronic Lock (see image)
- No Lock (hasp only for padlock)



Spacesaver Corporation
1450 Janesville Avenue
Fort Atkinson, WI 53538-2798
1-800-492-3434
www.spacesaver.com



KI
1330 Bellevue Street
P.O. Box 8100
Green Bay, WI 54302-8100
1-800-424-2432
www.ki.com

Spacesaver Corporation is a division of KI.

KI and Spacesaver are registered trademarks of Krueger International, Inc.

© 2015 KI and Spacesaver Corporation. All Rights Reserved. Litho in USA. GearBagLocker_1215_info_PS



September 12, 2019

To: Chief James Band
Oregon City Police Department

Overview: Deliver and install 5 Spacesaver Evidence Lockers at the new Robert Libke Public Safety Building on the Sourcewell contract # 031715-KII for Member #80668 City of Oregon City, Oregon.

Evidence Locker Details:

- 5 Pass-thru Evidence Locker Dimensions: 82"h x 24" d x 36" w
- 1" trim included
- Half height refrigerator with 6 openings
- 1-(A) door opening @ 32-3/8" w x 37-5/16"h
- 1-(C) door opening @ 14-9/16" w x 56"h
- 4-(D) door openings @ 14-9/16" w x 37-5/16"h
- 9-(F+ F) door openings @ 14-9/16" w x 9-7/32"h
- 11-(E) door opening @ 14-9/16" w x 18-15/32"h
- 1-(E) door opening @ 14-9/16" w x 18-15/32"h with a mail slot
- 1 each of locker configuration #5, #10, #16, #19 & #17 with half height refrigerator.
- Locker color: Standard Spacesaver Textured Color. **Black**
- Spacesaver Certified installation at prevailing rate.

Investment: Include new material, freight, drayage, Spacesaver Certified Installers and job site cleanup.....\$ 42,752.46

Engineering and permits not included in this quote.

Standard Terms: 35% down, 35% when materials arrive in the Spacesaver Specialists warehouse and remaining balance due upon completion of project. Standard working hours are Monday-Friday 7:00 AM – 5:00 PM. Preferred payment cash/check; VISA/MC accepted with a 3.75% additional fee.

Spacesaver equipment is warranted for the lifetime of the structural frames. All other equipment and components are warranted for five years, with labor covered for 1 year.

Respectfully submitted by

Doug Miller

Public Safety Specialist

503-612-2609

9.12.19





FULL-HEIGHT EVIDENCE LOCKERS

Standard Heights (including base)	44.563", 66.282", 82" (1132 mm, 1683 mm, 2,083 mm)
Standard Widths	18", 24", 36" (457 mm, 609 mm, 914 mm)
Standard Depth	24" (609 mm)
Base Height	4" (101 mm)

PRODUCT OVERVIEW

SECURE CHAIN OF CUSTODY: Keyless Evidence Lockers by Spacesaver® provide a secure chain of custody to ensure the protection and integrity of objects in police department's evidence handling process.

DESIGN FLEXIBILITY: The seventeen (17) basic compartment/door sizes are available in 100 door configurations, or custom door configurations to meet each department's need. Other design options include: Pass-thru (PT) or Non Pass-thru (NPT), cabinet rear door options, mail or video slots, refrigerated compartment units, custom textured colors, and a wall trim finishing package.

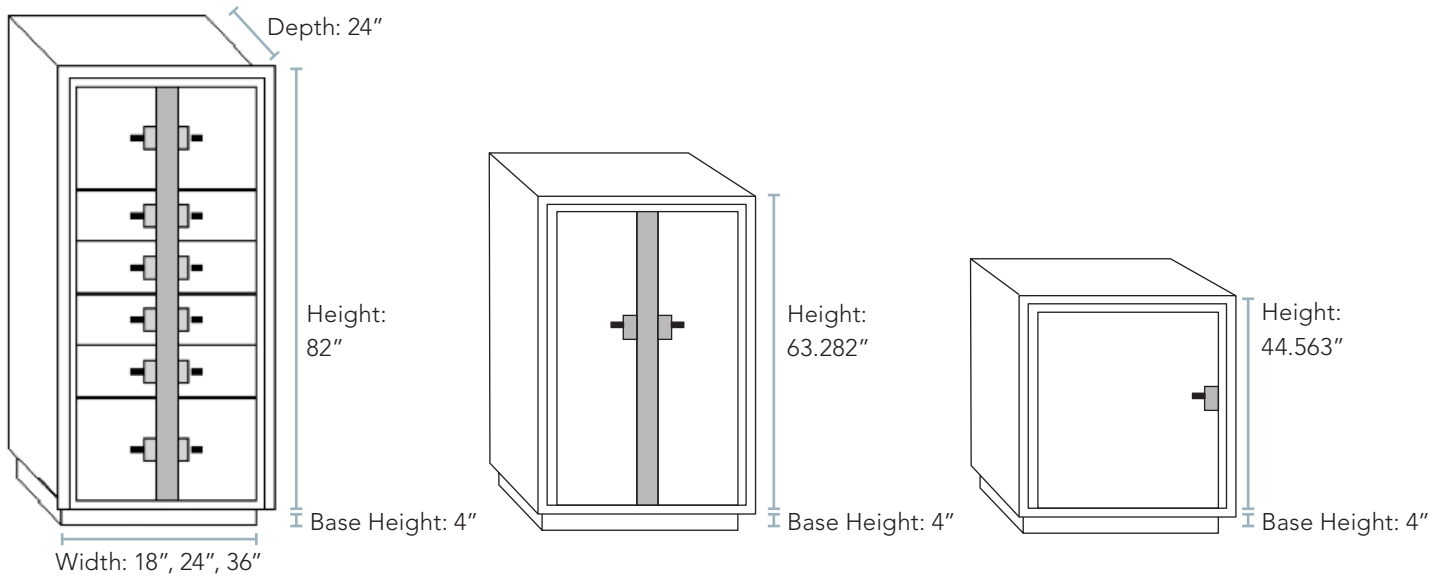
TWO STORAGE PROCESSES: Evidence Lockers can be designed for Pass-thru (PT), or Non Pass-thru (NPT) evidence storage.

BIM MODELS: Evidence Locker BIM models can be accessed on Spacesaver's website or by clicking [here](#).

STANDARD PRODUCT FEATURES & BENEFITS

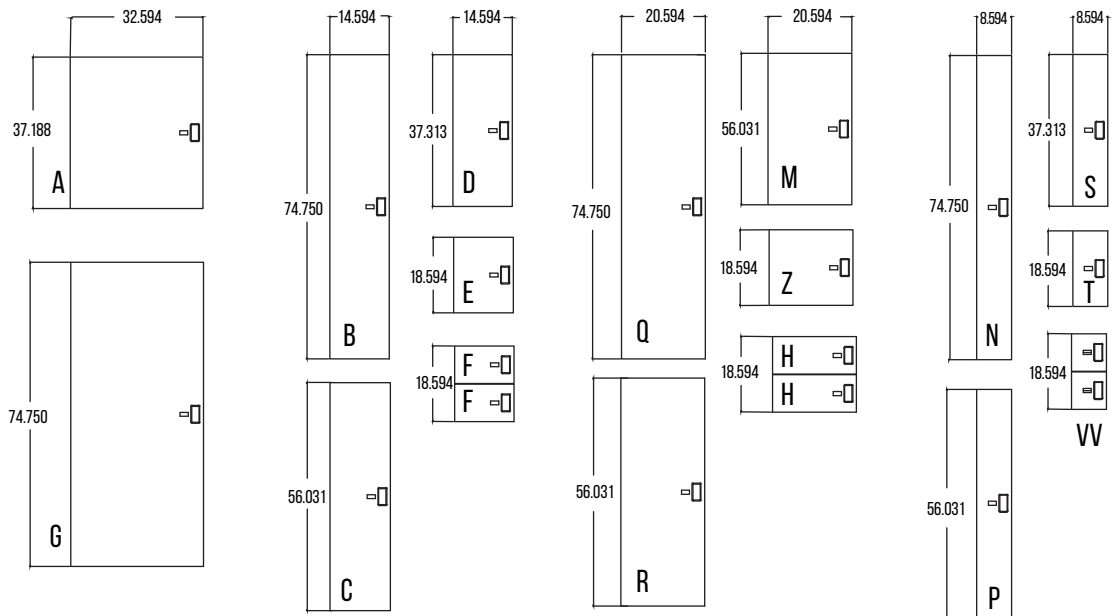
FEATURE	BENEFIT
Pass-thru (PT) or Non Pass-thru (NPT) evidence storage design	Pass-thru lockers are built into the wall, allowing the evidence drop-off area to be separated from the property and evidence room. With Non Pass-thru lockers, evidence can be deposited by any individual, but items can only be removed by authorized personnel.
Multi-point deadbolt locking system, double-walled welded doors, and anti-pry tabs	Unauthorized access denied to stored evidence, ensuring the protection of items.
Keyless deposit	Unattended depositing of evidence is simple and efficient with Spacesaver's unique keyless, push-button lock system.
Heavy-gauge, welded construction with high-quality powder coat finish	Evidence lockers are built to last and provide a lifetime of durability. The powder coat finish also resists rust and scratches.
Stainless steel, continuous door hinges	Hinges are tamper-proof, and provide doors that are self-closing—providing piece of mind after evidence drop-off.
Optional refrigerator	Provides evidence storage for temperature sensitive non-hazardous evidence.

EVIDENCE LOCKER UNIT - NOT TO SCALE



STANDARD FRONT DOOR COMPARTMENT SIZES

DOOR	HEIGHT	WIDTH
A	37.188"	32.594"
B	74.750"	14.594"
C	56.031"	14.594"
D	37.313"	14.594"
E	18.594"	14.594"
FF	18.594"	14.594"
G	74.750"	32.594"
HH	18.594"	20.594"
M	56.031"	20.594"
N	74.750"	8.594"
P	56.031"	8.594"
Q	74.750"	20.594"
R	56.031"	20.594"
S	37.313"	8.594"
T	18.594"	8.594"
VV	18.594"	8.594"
Z	18.594"	20.594"



Spacesaver®

Spacesaver Corporation
1450 Janesville Avenue
Fort Atkinson, WI 53538-2798
1-800-492-3434
www.spacesaver.com



KI

1330 Bellevue Street
P.O. Box 8100
Green Bay, WI 54302-8100
1-800-424-2432
www.ki.com

Spacesaver Corporation is a subsidiary of KI.

KI and Spacesaver are registered trademarks of Krueger International, Inc.

© 2017 KI and Spacesaver Corporation. All Rights Reserved. Litho in USA. SSC/DEL EDL_0517_Cut

PRODUCT NEWS

SPACESAVER CORPORATION

EVIDENCE LOCKER WITH DROP SLOT

Saving space and maintaining the chain of custody



THE CHALLENGE

Law enforcement agencies need to prove that every piece of evidence in a case has been preserved, all the way from the crime scene to the courtroom. Spacesaver's pass-through evidence lockers allow officers to deposit evidence on one side of a wall, and then evidence technicians can remove it from inside the evidence room on the other side.

But some police departments had a problem: because evidence technicians typically don't work on weekends and holidays, and because officers seize a lot of evidence during those times, they were using all available evidence locker compartments over long holiday weekends. In short, they were running out of space. Since most evidence is small, like witness statements, bags of drugs, and camera memory cards, officers at this police department asked if one compartment could be fitted with a door with a drop slot.

THE SOLUTION

Spacesaver's engineers designed a drop slot that saves space by allowing multiple evidence envelopes to be deposited into a single compartment. Officers label the envelopes as usual and drop them in the slot. The slot features a hinged flap and "teeth" that prevent evidence from being removed by unauthorized personnel, and evidence remains secure until evidence technicians retrieve it through the locker's back door.

THE RESULT

This sturdy, convenient solution secures small evidence and maintains the chain of custody, even on busy holiday weekends.

WANT TO LEARN MORE?

Contact your local Spacesaver distributor or call **800.492.3434**
to schedule your free space assessment today!

Storage Solved®



Spacesaver® Corporation is a division of KI.

800.492.3434 | www.spacesaver.com | ssc@spacesaver.com

KI and Spacesaver are registered trademarks of Krueger International, Inc.

© 2018 KI and Spacesaver Corporation. All Rights Reserved. EDL_Drop_Slot_1018_News.pdf



INFO SHEET

Spacesaver's Evidence Refrigerator

Designed and developed by Spacesaver for the needs of unattended half-height refrigerated evidence drop off, the Evidence Refrigerator raises the benchmark in refrigerated evidence handling for today and into the future; Available for both the "Pass Thru" and "Non-Pass Thru" processes. Evidence Refrigerator is considered half height, meaning a half height cabinet (41.5") can be stacked on top to match dimensions of a full height evidence cabinet.

STANDARD FEATURES

- Modular construction, units shipped fully assembled and ready to use.
- Refrigerator dimensions are 41.44"H x 36"W x 24"D
- Refrigerator doors protrude 2 inches in front and rear for a total depth of 28"
- Maintains preset controlled temperature of 38°F to 42°F (3°C to 5.5°C)
- "Power ON" digital temperature display
- Audible alarm preset at 36°F (Low) and 44°F (High)
- Keyless locking system prevents re-access by depositor to secure evidence
- Available in Pass-Thru and Non Pass-Thru models
- Condensation free door jams
- Magnetic seal on main doors
- Automatic Defrost cycle
- 404A Refrigerant
- Powered by 115V / 10 amp
- ETL Listed
- Number tags installed on all front doors
- Adjustable floor levelers in base
- Wall trim packages included on Pass-thru models
- All installation hardware included
- One (1) year limited warranty on refrigeration units



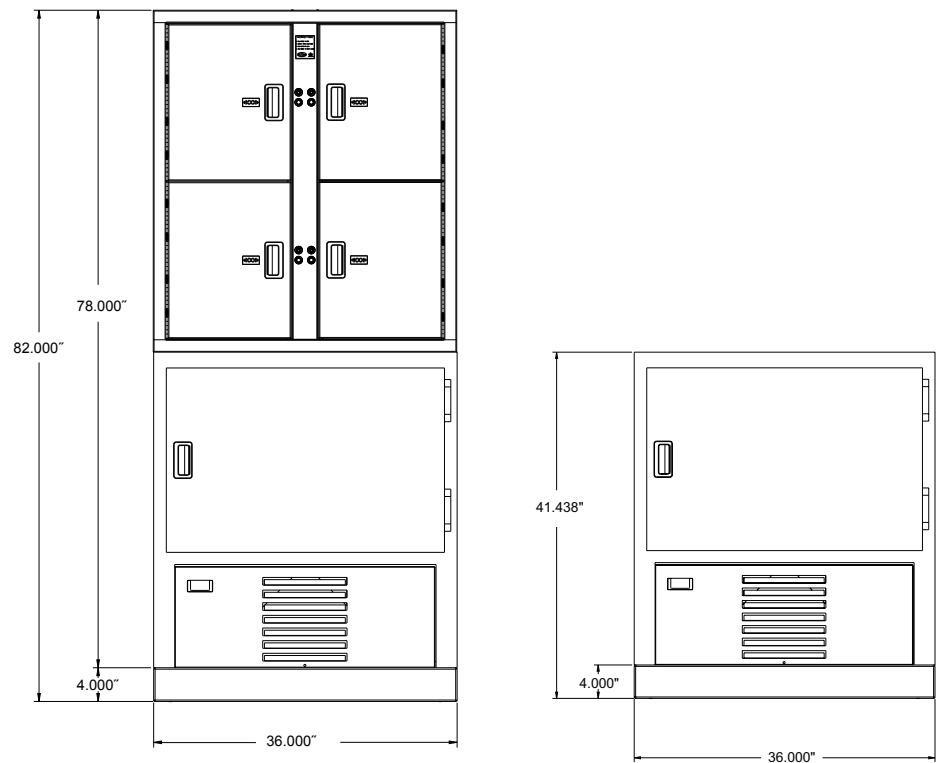
- Easy access to refrigeration unit
- Chamber cooling provided via cold (forced) air circulation

OPTIONS

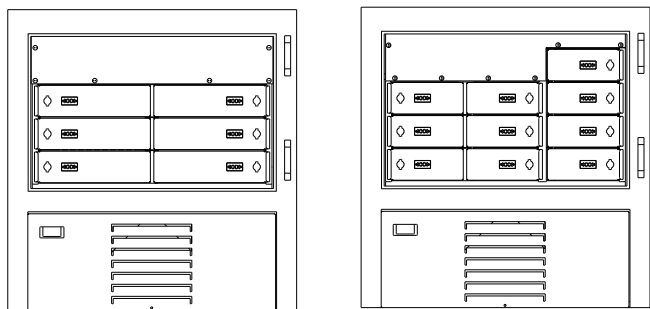
- Available compartments: 6 or 10



BASIC DIMENSIONS



STANDARD INTERIOR DOOR CONFIGURATIONS



No. of Doors	Opening Height	Opening Width
6	4"	13.5"
10	4"	7.875"

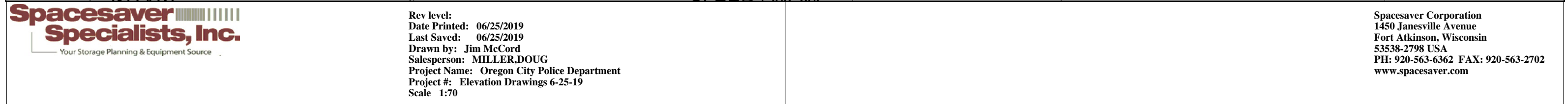
All dimensions shown indicate maximum size of evidence container that can be put into compartment.



Spacesaver Corporation
1450 Janesville Avenue
Fort Atkinson, WI 53538-2798
1-800-492-3434
www.spacesaver.com



KI
1330 Bellevue Street
P.O. Box 8100
Green Bay, WI 54302-8100
1-800-424-2432
www.ki.com





September 12, 2019

To: Chief James Band
Oregon City Police Department

Overview: Deliver and install 2 each 5-Tier Spacesaver Duty Bag Storage Lockers in the Bike Room at the Robert Libke Public Safety Building on the **Sourcewell Contract # 031517-KII** for **Sourcewell Member # 80668** City of Oregon City.

Spacesaver Bike Room Duty Bag Locker Details: 10 total openings.

- Locker dimensions overall @ 24" w x 96" h x 30" d
- 5 tier openings @ approximately 18"H
- 4" base.
- Mesh doors.
- Hasp lock, magnetic closure. **Locks provided by others.**
- Number tag.
- Trim included.
- Color: Spacesaver standard colors: **Black**

Investment: Includes new material, freight, drayage, Spacesaver Certified Installers and job site clean up..... \$ 5,012.47

Engineering & permits not included in this quote.

Terms: 35% down, 35% when materials arrive in Spacesaver Specialists warehouse and remaining balance due upon completion of project. Standard working hours are Monday-Friday 7:00 AM- 5:00 PM. Preferred payment cash/check; VISA/MC accepted with a 3.75% additional fee.

Spacesaver equipment is warranted for the lifetime of the structural frames. All other equipment and components are warranted for five years, with labor covered for 1 year.

Respectfully submitted by

Doug Miller

Public Safety Specialist

503-612-2609

9.12.19

Spacesaver Specialists, Inc.

9730 SW Herman Road • Tualatin, Oregon 97062 • Tel 503.924.4100 • Toll free 800.456.2066 • Fax 503.924.4114

General Contractor, OR:88704 • WA:SPACES1110JO

www.storageplanning.com

