

Exhibits

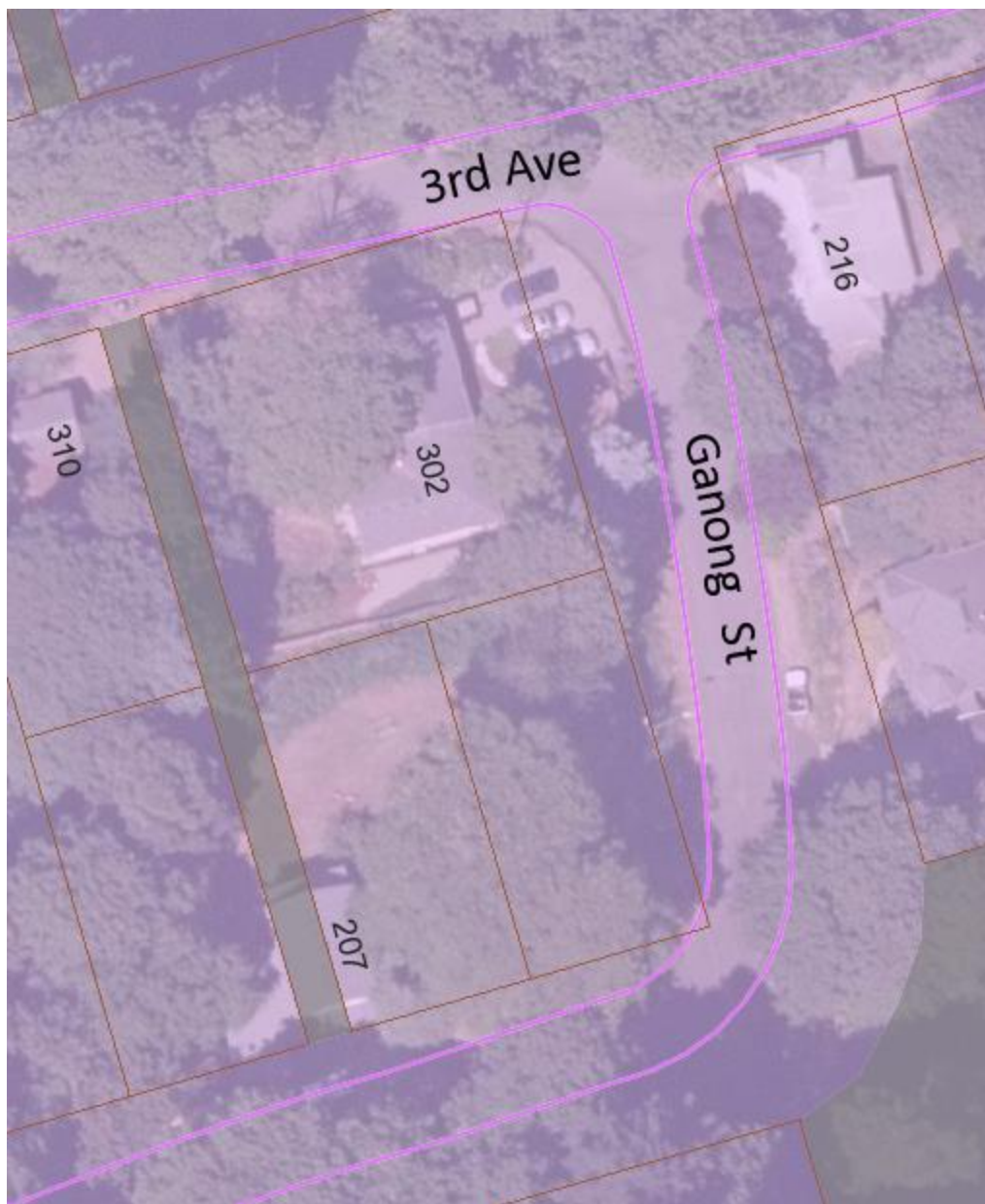


Location Map – 302 3rd Street at the intersection of 3rd and Ganong



Stream and Wetland Layers shown.

The purple line shows the edge of pavement.



Natural Resource Overlay District



Title 3 Riparian Area



Title 3 Wetland Vegetated Corridor



Street View looking eastward on Ganong Street from 3rd Street



Looking eastward toward 4th Avenue, about midblock on Ganong Street



Looking westward on Ganong from 4th Ave to 3rd Ave.



Looking westward from 4th Ave. to 3rd Ave. about midway on Ganong Street



Looking westward on Ganong Street almost to the intersection with 3rd Ave.



Intersection view westward at 3rd Ave. and Ganong Street looking from Ganong Street seeing a vehicle traveling north to eastbound



Intersection of 3rd Ave and Ganong Street looking in a southeasterly direction



302 3rd Ave; On private property looking towards Coffee Creek



302 3rd Street; On private property looking upstream of Coffee Creek, towards Ganong Street



Historic basalt channel of Coffee Creek looking towards 302 3rd Ave on private property.



Historic basalt channel of Coffee Creek; Creek channel in the public ROW.



Coffee Creek; downstream of the home at 302 3rd Ave looking towards 310 3rd Avenue. Private property.



Coffee Creek looking upstream towards home on 302 3rd Ave. Private property



Fence and guardrail fronting 302 3rd Avenue but along Ganong Street



Ganong Street looking from 302 3rd Ave. towards 216 3rd Ave.; green utility locates indicate location of Coffee Creek.