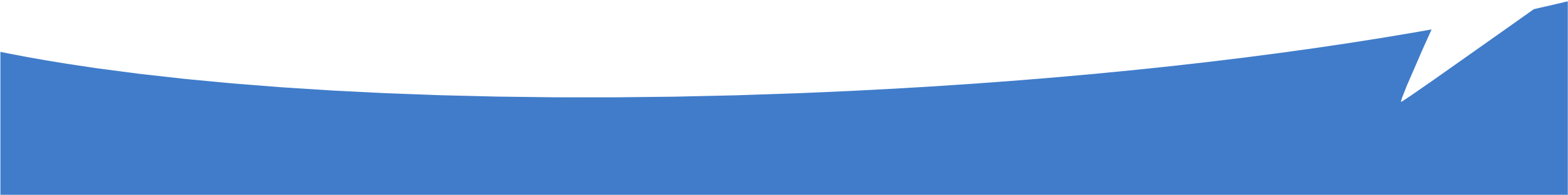




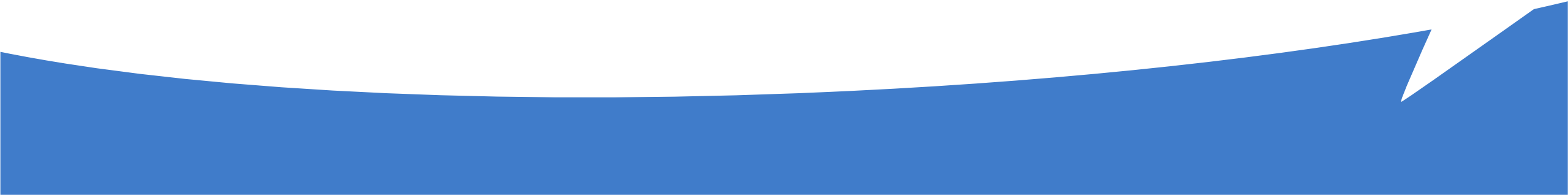
Five Year Pavement Maintenance Plan 2020-2024

Presented by: Gabe Crop, PE - Murraysmith

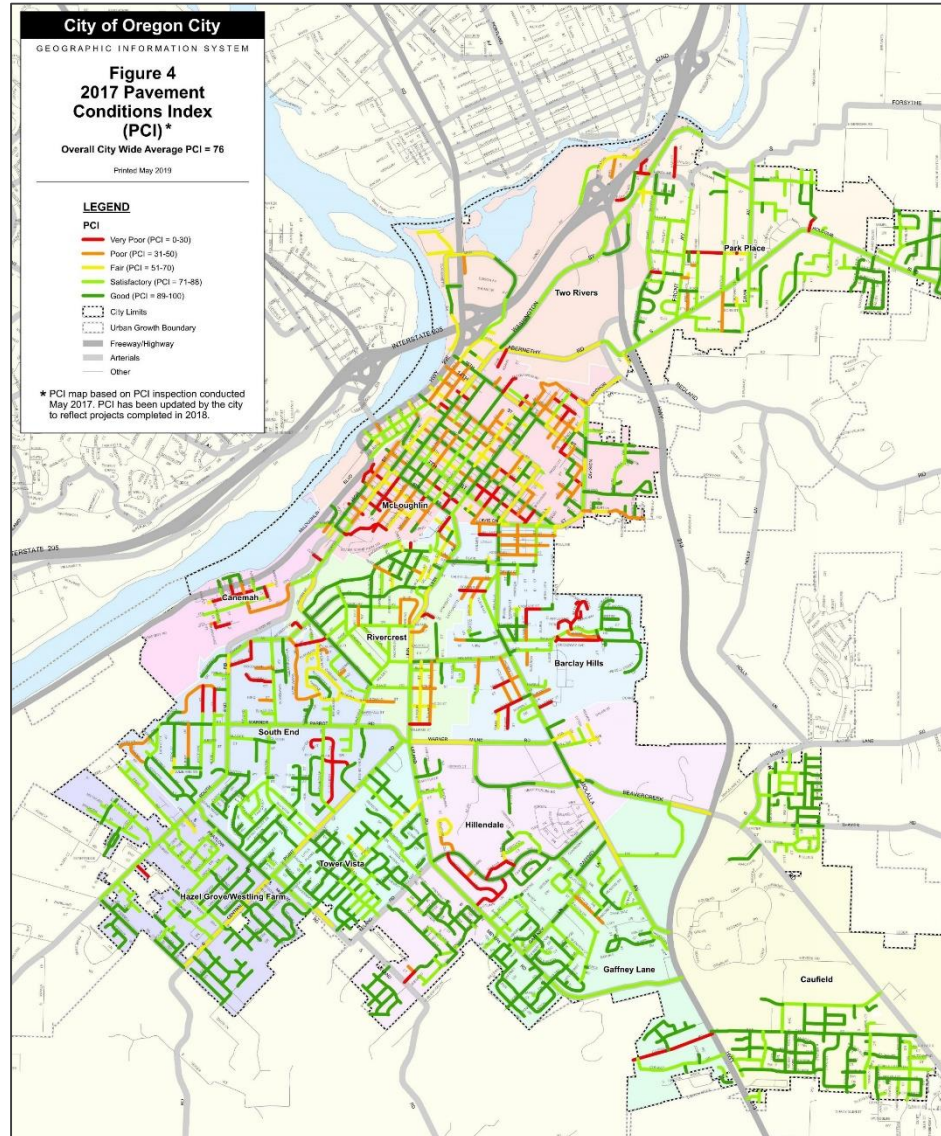
History

- 2008 – Transportation Utility Fee established
 - Phase-in process
 - Projects begin and increase in size
 - 2012 – First Pavement Maintenance Plan
 - 2015 – Plan update
 - 2019 – New plan needed
- 
- A solid blue decorative graphic at the bottom of the slide, featuring a wavy, upward-sloping line on the right side that resembles a stylized mountain or a rising path.

What is PMUF?

- Pavement Maintenance Utility Fund
 - To provide supplemental funding for street maintenance
 - Fees collected based on trips
 - Funds used for regular rehabilitation and preventative maintenance
 - Goal – To help manage the City's street infrastructure investment
- 
- A solid blue decorative graphic at the bottom of the slide, featuring a wavy, upward-sloping line on the right side that resembles a stylized mountain or a rising path.

Where are we Today?



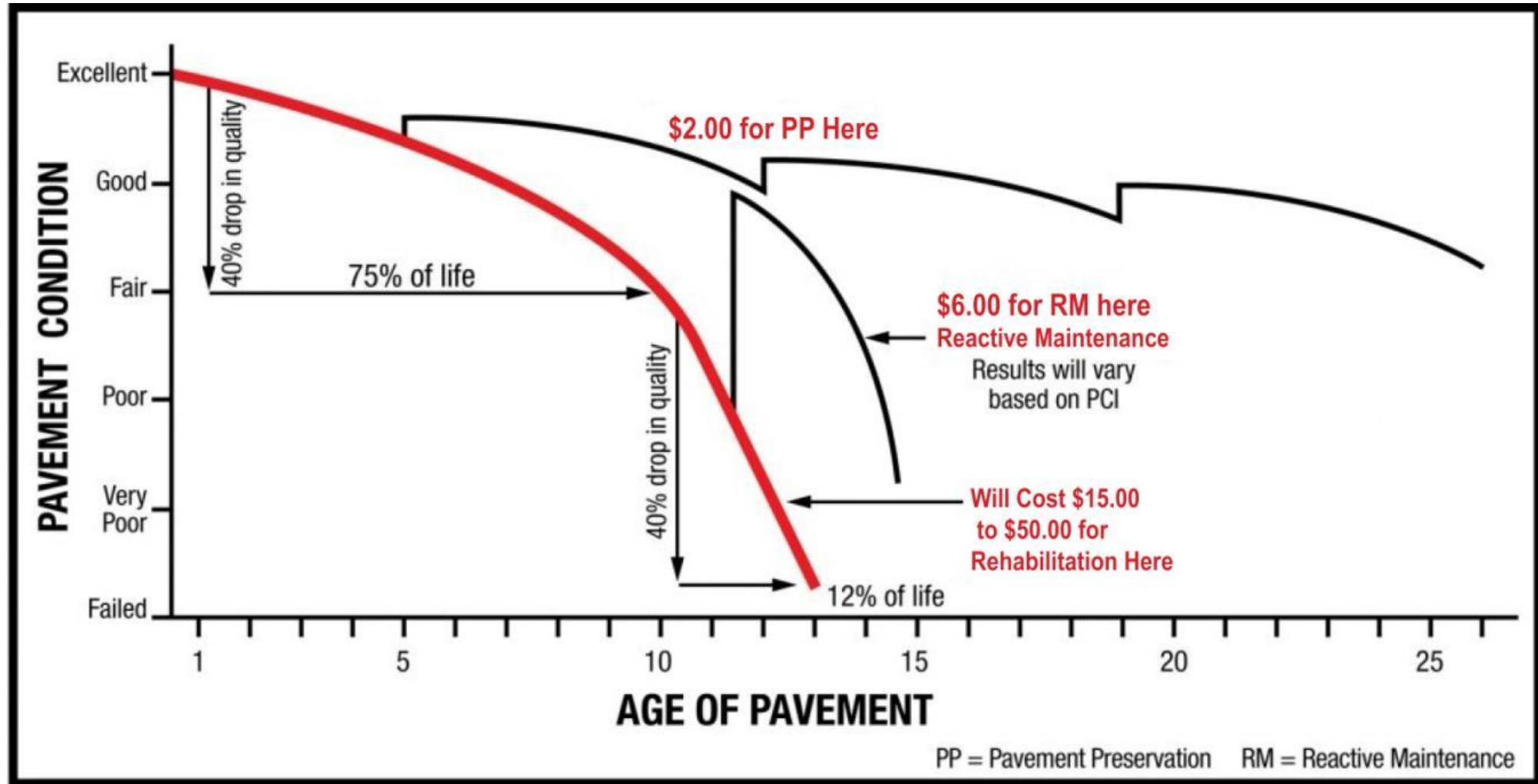
Year	Average PCI
2011	60
2012	61
2013	68
2014	67
2015	66
2016	76
2017	76
2018	75

Why do we need a Plan?

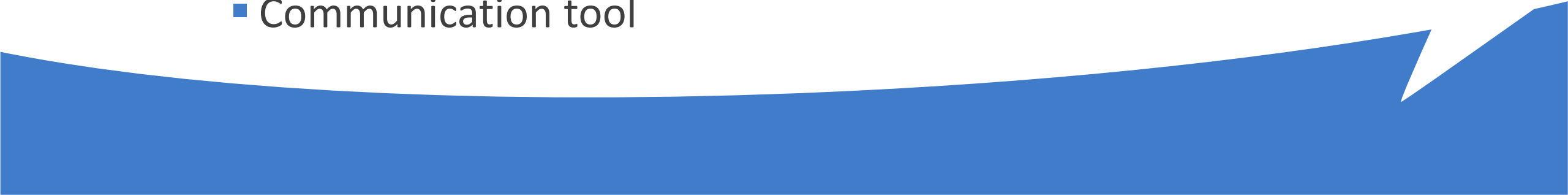
To be good stewards of the PMUF by applying the right treatment at the right time to meet community needs



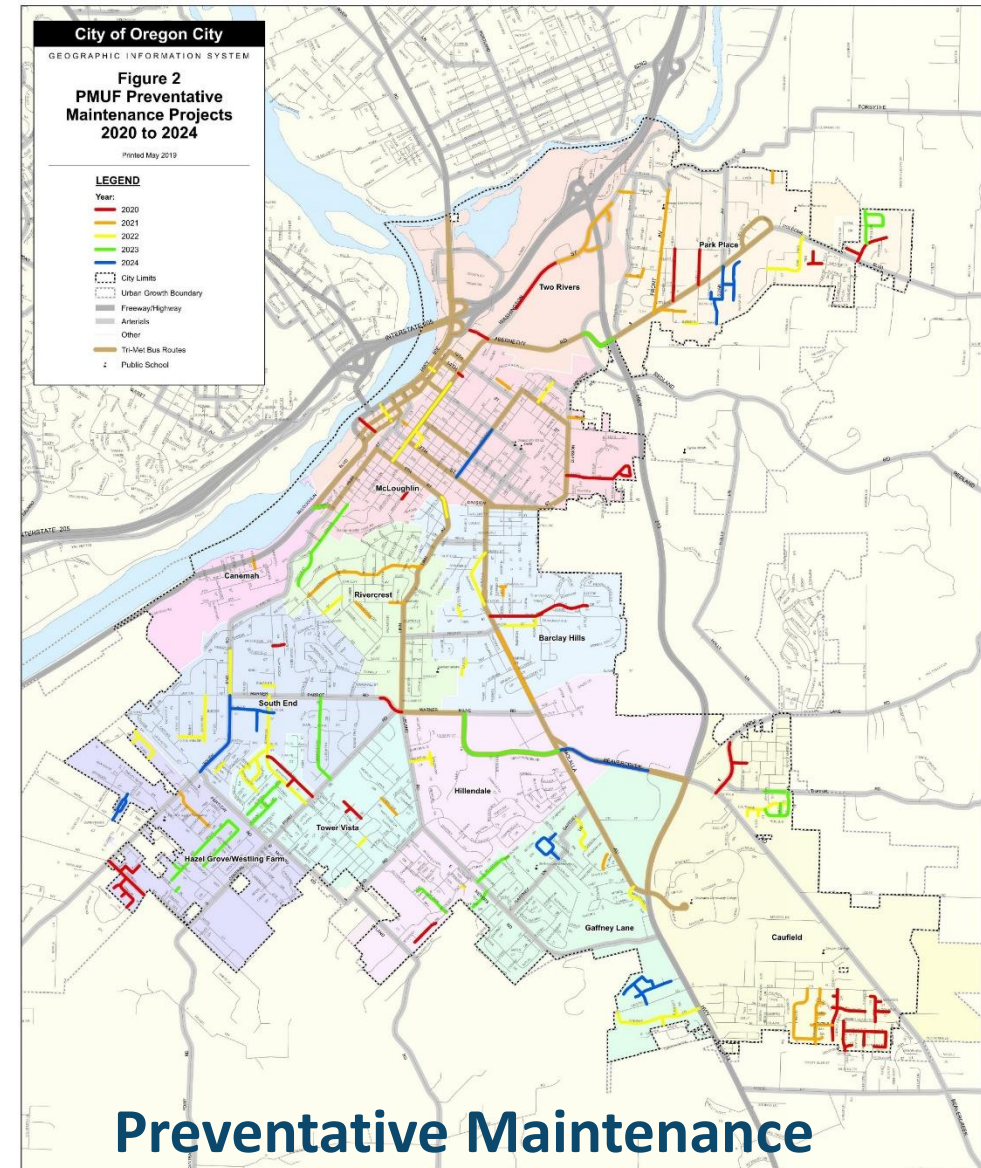
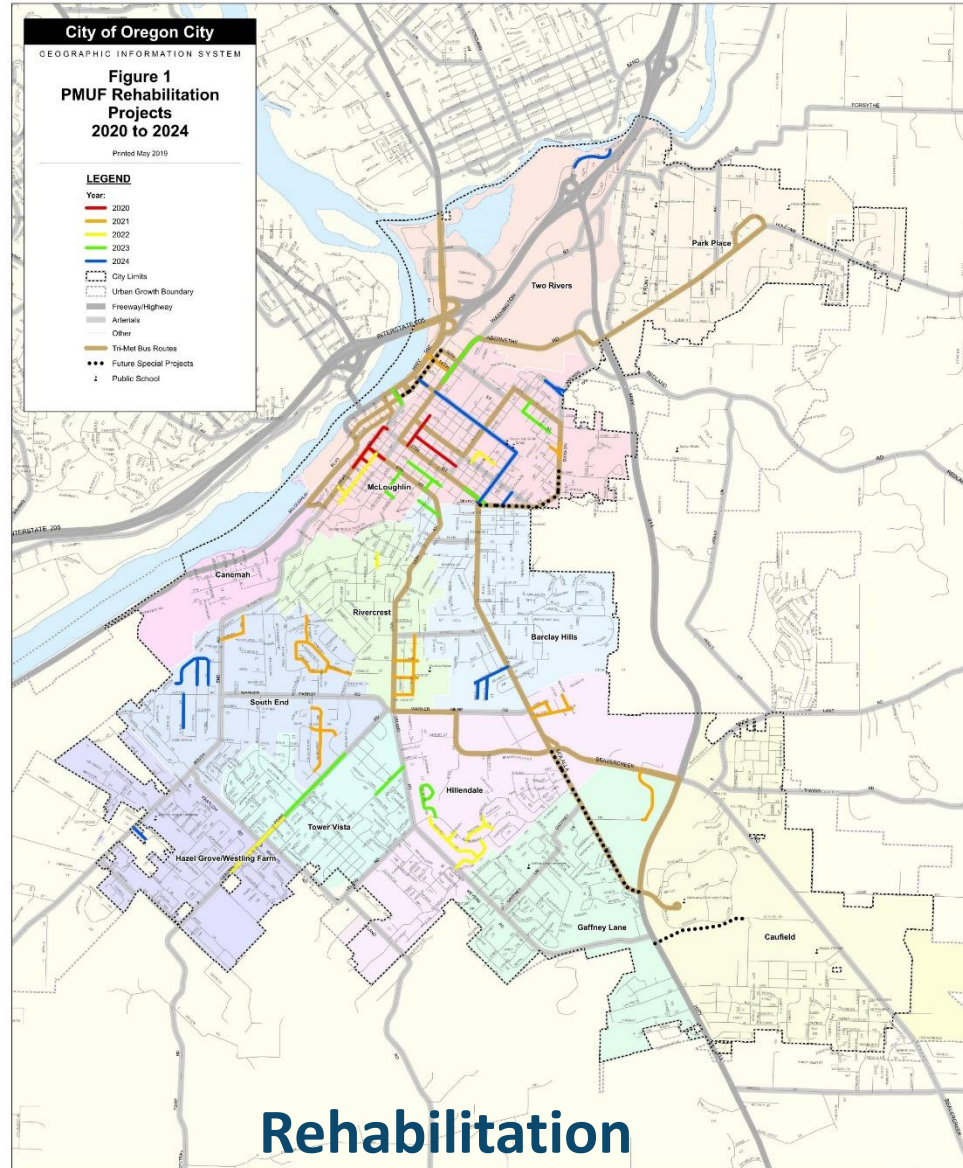
Why do we need a Plan?




What's in a Pavement Maintenance Plan?

- Learning from past work
 - Funding projections
 - Establish types of treatments
 - Rehabilitation
 - Preventative Maintenance
 - Coordinate with other projects
 - Establish a project list
 - Communication tool
- 
- A solid blue decorative graphic at the bottom of the slide, featuring a wavy, irregular shape that resembles a stylized horizon or a piece of pavement.

Project Maps



The Planning Process

- Review past work
 - Cost analysis
 - Rehabilitation list development
 - Workshops (group effort)
 - Street needs, overlapping utility projects, development timelines, etc.
 - Preventative maintenance list
 - Plan document with “working” list
- 

The Future of PMUF

Projections	2019 (Existing Condition)	2024 (Projection)
PCI	74	71
Deferred Maintenance	\$12.6M	\$19.2M
% of Network in Very Good Condition (PCI > 70)	75.1%	74.8%
% of Network in Very Poor Condition (PCI < 25)	4.5%	8.1%

murraysmith



Thank you!