
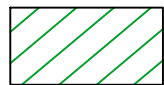

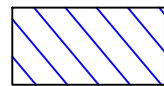



Legend

- 

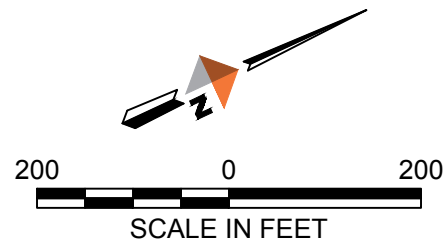
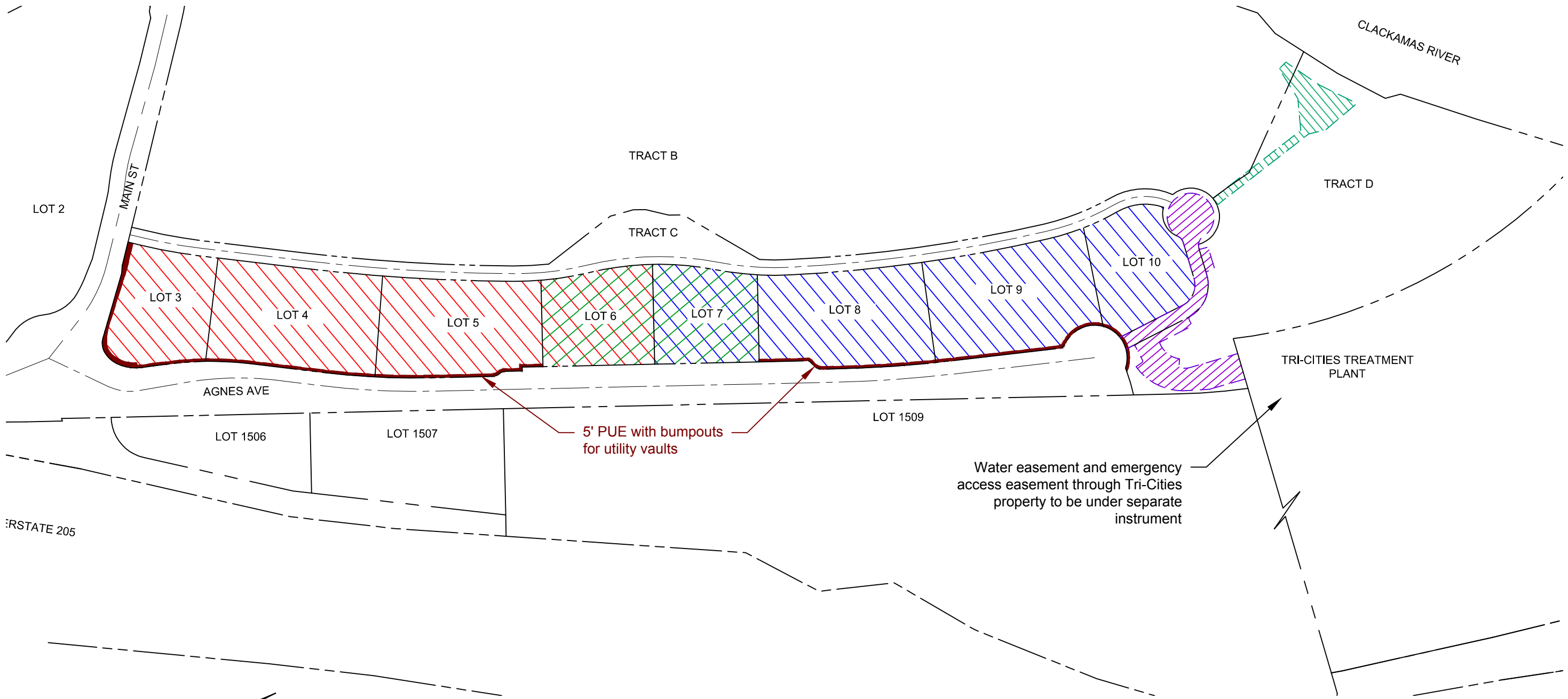
Reciprocal parking, access, and utility easement across Lots 3-6
- 

Reciprocal access and utility easement across Lots 6 & 7
- 

Private Storm Easement to benefit Lot 10 and Tract C
- 

Reciprocal parking, access, and utility easement across Lots 7-10
- 

Parking, access, and waste storage easement granted to Lots 3-10





DOWL

720 SW Washington Street, #750
Portland, Oregon 97205
971-280-8641

WWW.DOWL.COM

Cove Waterfront Residences
Proposed Easement Exhibit
Oregon City, OR

PROJECT	14307.02
DATE	12/10/2018

FIGURE 1

\\BL-FS\BIL-projects\2214307-0165CAD\Exhibits\2018-12-10-Proposed Easements Exhibit\SCD-REPLAT-14307.dwg PLOT DATE 2018-12-10 12:02 SAVED DATE 2018-12-10 11:55 USER: kgildden