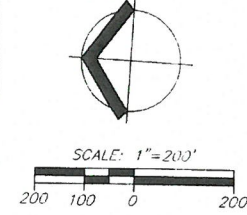


SHEET INDEX:

- SHEET 1: OVERALL PROPERTY, MONUMENT TABLE, CURVE TABLE & LEGEND.
- SHEET 2: LOT 2, PARTIAL LOT 3, TRACT A, PARTIAL TRACTS B & C, CURVE TABLE & LEGEND.
- SHEET 3: LOT 1, PARTIAL TRACT B, CURVE TABLE, NARRATIVE, NOTES AND RESTRICTIONS & LEGEND.
- SHEET 4: PARTIAL LOT 3, LOTS 4, 5, 6, PARTIAL TRACTS B & C, CURVE TABLE, DETAIL "A" & LEGEND.
- SHEET 5: LOT 7, PARTIAL TRACTS B & C, TRACTS D & E CURVE TABLE, & LEGEND.
- SHEET 6: SURVEYOR'S CERTIFICATE, DECLARATION, ACKNOWLEDGEMENT, CITY APPROVALS, COUNTY APPROVALS, POST MONUMENTATION NO'E & CONSENT AFFIDAVIT

PREPARED FOR:

PACIFIC PROPERTY SEARCH, LLC



LEGEND:

- - DENOTES 5/8" X 30" IR WITH YPC MARKED "CARDNO WRG, INC." SET DURING REMAINING MONUMENTATION ON
- - DENOTES 5/8" X 30" IR W/ YPC MARKED "CARDNO WRG, INC." IN MONUMENT BOX, SET DURING REMAINING MONUMENTATION ON
- - DENOTES FOUND MONUMENT AS NOTED IN MONUMENT TABLE
- ✕ - DENOTES FOUND 5/8" X 30" IR WITH YPC MARKED "CARDNO WRG, INC." PER SURVEY NO. 2009-179
- ⊠ - DENOTES FOUND 10mm (1-5/32") BERNTSEN BP2 BRASS PLUG MARKED "CARDNO WRG, INC." PER SURVEY NO. 2009-179
- ✕ - MONUMENT NOT SET
- W/ YPC - DENOTES WITH YELLOW PLASTIC CAP
- IR - DENOTES IRON ROD
- ST - DENOTES STREET
- SN - DENOTES SURVEY NUMBER, CLACKAMAS COUNTY SURVEY RECORDS

MONUMENT TABLE:

- 101 5/8" IR W/ YPC "K.W. COX ASSOC, INC.", AS DEPICTED ON PS 21,873, HELD
- 102 5/8" IR W/ ALUM CAP "LS 1647", AS DEPICTED ON PS 21,873, HELD
- 104 R.R. SPIKE CENTERLINE OF MAIN STREET, W/ PUNCH, SET PER PS 21,873
- 105 5/8" IR W/ ALUM CAP "LS 1647" W/ PUNCH, AS DEPICTED ON PS 21,873, HELD FOR INTERSECTION
- 108 1/2" IR NO CAP, SHOWN AS A STONE WITH "L" AS DEPICTED ON PS 19,334
- 109 3-1/4" BRONZE DISK IN 7.5" STEEL PIPE, AS DEPICTED ON USBT 1999-049
- 114 5/8" IR W/ ALUMINUM CAP "OREGON STATE HIGHWAY DEPARTMENT", WITH PUNCH, 0.18" W
- 115 1" IP, DOWN 0.4", AS DEPICTED ON PS 21,873, N70°59'35"W 0.32'
- 116 5/8" IR W/ YPC, "K.W. COX ASSOC, INC.", DOWN 1.0", AS DEPICTED ON PS 21,873, HELD
- 124 5/8" IR, NO CAP, DOWN 0.5", AS DEPICTED ON PS 25,785, HELD
- 125 5/8" IR, W/ YPC "WCI" LS 1841, DOWN 0.2", AS DEPICTED ON PS 25,785, HELD
- 126 5/8" IR, W/ YPC NOT LEGIBLE, PER PS 22,280, DOWN 0.3", HELD
- 127 5/8" IR, W/ YPC "WCI" LS 1841, DOWN 0.3", PER PS 25,785, HELD FOR EAST RIGHT OF WAY LINE OF THE PORTLAND TRACTION COMPANY.
- 129 1/2" BOLT, DOWN 0.2", ORIGIN UNKNOWN, (FIELD TIED 1/2" BOLT ON 08/09/2008, N24°03'10"E 0.11'), MONUMENT 181 APPEARS TO HAVE BEEN SET IN LIEU OF SAID MONUMENT 129
- 130 5/8" IR NO CAP, AS DEPICTED ON SB-3-15, HELD FOR HIGHWAY 99, 2.65' S OF INTERSECTION WITH MAIN STREET
- 131 5/8" IR NO CAP BENT, TIED STRAIGHT, DOWN 0.2", AS DEPICTED ON PS 25,785, HELD FOR LINE
- 132 1" IP TOP BROKEN OFF, S83°53'02"E 38.01' FROM POINT 181, PS 7910
- 133 5/8" IR NO CAP, DOWN 1.7", AS DEPICTED ON PS 25,785, HELD
- 134 5/8" IR NO CAP, BENT, TIED STRAIGHT, DOWN 0.1", AS DEPICTED ON PS 25,785, HELD
- 135 5/8" IR NO CAP, W/ YPC "WCI" LS 1841", AS DEPICTED ON PS 25,785
- 136 5/8" IR W/ YPC NOT LEGIBLE, DOWN 0.4", AS DEPICTED ON PS 22,280
- 137 1" PLASTIC CAP WITH MAGNET, ORIGIN UNKNOWN, BROKEN LATH IN HOLE
- 138 5/8" IR NO CAP, DOWN 0.6", SET PER SN 21687, HELD FOR LINE
- 140 5/8" IR W/ ALUM CAP 0.5", ORIGIN UNKNOWN
- 145 5/8" IR W/ ALUM CAP "OREGON STATE HIGHWAY DEPARTMENT", WITH PUNCH, PER 1A-20-7
- 163 5/8" IR NO CAP, TOP BENT SW, AS DEPICTED ON 1A-20-7, STA 673+72.55 3.0' OFFSET
- 164 5/8" IR NO CAP, AS DEPICTED ON 1A-20-7, STA 675-18.86 3.0' OFFSET
- 165 5/8" IR NO CAP, BENT SOUTHWESTERLY, TIED STRAIGHT, DOWN 0.3", PER 1A-20-7, STA 682+68.86 3.0' OFFSET
- 166 5/8" IR NO CAP, DOWN 0.5", AS DEPICTED ON 1A-20-7, 3.0' S28°29'14"E 3.36' FROM STA 684+74.57
- 167 5/8" IR NO CAP, DOWN 0.45, BENT SW, AS DEPICTED ON 1A-20-7, N18°21'18"W 4.18' FROM STA 694+74.57
- 168 BRASS CAP IN CONCRETE IN MONUMENT BOX, AS DEPICTED ON 1A-20-7, STA 33+43.56 (MCLOUGHLIN), HELD
- 169 5/8" IR IN MON BOX IN MON BOX ON HIGHWAY 99, P.S.C. 82+59.7 (SB-3-15)
- 176 1/2" IP WITH TACK, DOWN 2.3", AS DEPICTED ON PS 6977, N68°13'54"W 0.31'
- 177 5/8" IR W/ YPC, "COMPASS ENGINEERING", AS DEPICTED ON SN 2008-317, HELD
- 178 5/8" IR W/ YPC, "COMPASS ENGINEERING", AS DEPICTED ON SN 2008-317, HELD
- 179 5/8" IR W/ YPC, "COMPASS ENGINEERING", AS DEPICTED ON SN 2008-317, HELD
- 180 1-1/2" ALUM CAP WITH PUNCH, "COMPASS ENG.", AS DEPICTED ON SN 2008-317, HELD
- 181 1" BRASS PLUG, "COMPASS ENG.", AS DEPICTED ON SN 2008-317, HELD
- 182 5/8" IR W/ YPC, "COMPASS ENGINEERING", AS DEPICTED ON SN 2008-317, HELD
- 184 5/8" IR W/ YPC, "BLAIR LS 1981", PER PS 19,334, HELD
- 185 5/8" IR W/ YPC, "COMPASS ENGINEERING", AS DEPICTED ON SN 2008-317, HELD
- 299 1/2" IR DOWN 2.0' UNDER GRAVEL AND DEBRIS FROM PREVIOUS HIGH WATER OCCURRENCES, APPEARS TO HAVE BEEN SET IN PS 2,857, HELD FOR LINE
- 300 1" BRASS PLUG, "COMPASS ENG.", AS DEPICTED ON SN 2008-317, HELD, SHOWN INCORRECTLY ON SN 2009-179 AS SET 5/8" X 30" IR WITH YPC MARKED "CARDNO WRG, INC."

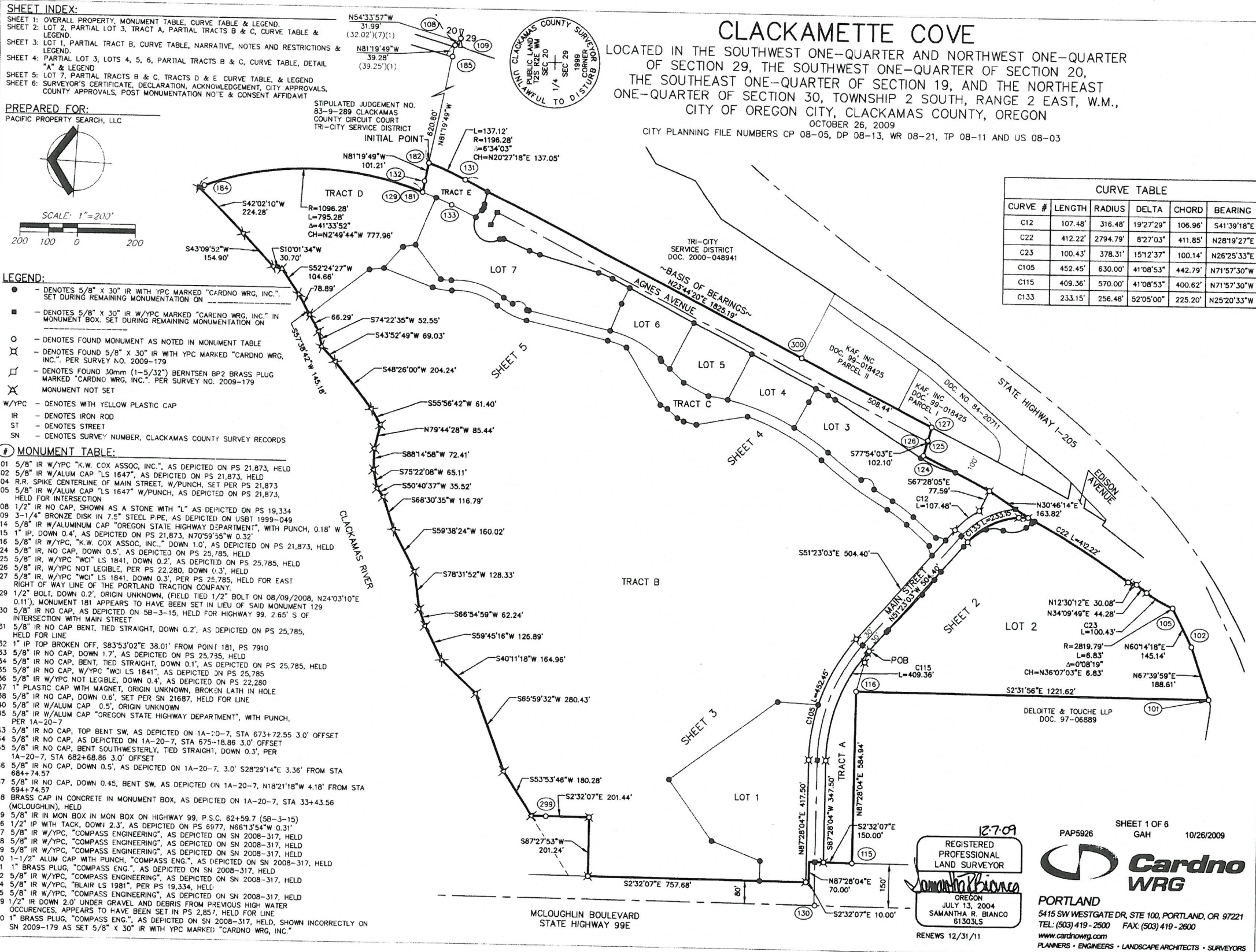


CLACKAMETTE COVE

LOCATED IN THE SOUTHWEST ONE-QUARTER AND NORTHWEST ONE-QUARTER OF SECTION 29, THE SOUTHWEST ONE-QUARTER OF SECTION 20, THE SOUTHEAST ONE-QUARTER OF SECTION 19, AND THE NORTHEAST ONE-QUARTER OF SECTION 30, TOWNSHIP 2 SOUTH, RANGE 2 EAST, W.M., CITY OF OREGON CITY, CLACKAMAS COUNTY, OREGON

OCTOBER 26, 2009
CITY PLANNING FILE NUMBERS CP 08-05, DP 08-13, WR 08-21, TP 08-11 AND US 08-03

CURVE TABLE					
CURVE #	LENGTH	RADIUS	DELTA	CHORD	BEARING
C12	107.48'	316.48'	19°27'29"	106.96'	S41°39'18"E
C22	412.22'	2794.79'	8°27'03"	411.85'	N28°19'27"E
C23	100.43'	378.31'	15°12'37"	100.14'	N26°25'33"E
C105	452.45'	630.00'	41°08'53"	442.79'	N71°57'30"W
C115	409.36'	570.00'	41°08'53"	400.62'	N71°57'30"W
C133	233.15'	256.48'	52°05'00"	225.20'	N25°20'33"W



12-7-09
REGISTERED PROFESSIONAL LAND SURVEYOR
Samantha R. Bianco
OREGON
JULY 13, 2004
SAMANTHA R. BIANCO
61303LS
RENEWS 12/31/11

SHEET 1 OF 6
GAP 10/26/2009

PAP5926

Cardno WRG

PORTLAND
5415 SW WESTGATE DR, STE 100, PORTLAND, OR 97221
TEL: (503) 419-2500 FAX: (503) 419-2600
www.cardnowrg.com
PLANNERS • ENGINEERS • LANDSCAPE ARCHITECTS • SURVEYORS