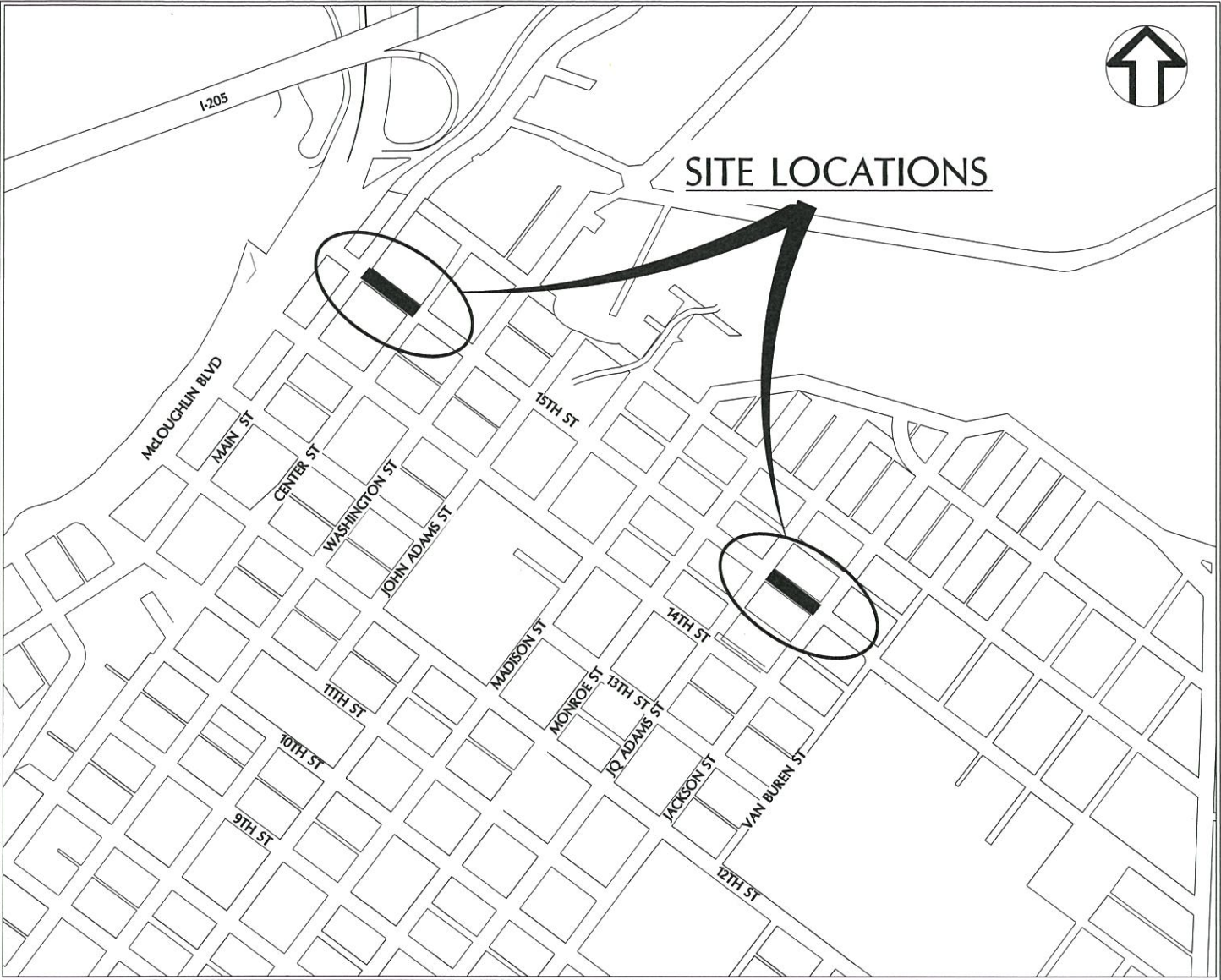


CITY OF OREGON CITY

15TH STREET STORM SEWER IMPROVEMENTS

OC PROJECT NO. PS 17-015/CI 17-009

FEBRUARY 2018



PROJECT SITE MAP

NOT TO SCALE



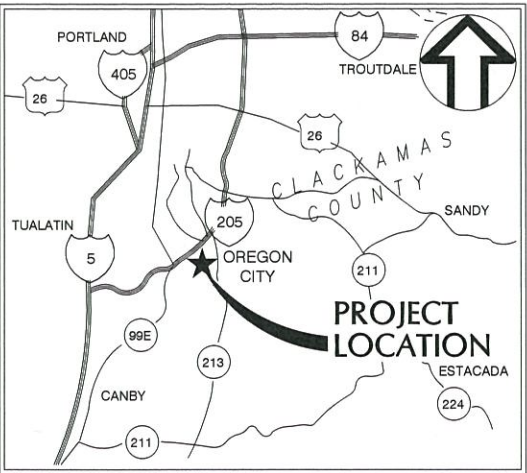
Civil Engineer: Wallis Engineering
215 W. 4th Ave., Suite 200
Vancouver, Washington 98660
(360) 695-7041
Contact: Wes Wegner, P.E.



Owner: City of Oregon City
P.O. Box 3040
625 Center Street
Oregon City, Oregon 97045
Oregon City Public Works Department
Contact: John Burrell, Project Manager
(503) 496-1556
Contact (Utility Division): Eric Hand / Kevin Hanks
(503) 657-8241
Contact (Street Division): Matt Powlison
(503) 657-8241

Other Agencies:

Tri-Met (503) 962-4949 Contact: Rick Elliot	NW Natural (503) 226-4211 Ext. 4429 Contact: Peter Cathcart	Comcast (503) 596-3767 Contact: Kenneth Wills
Portland General Electric (503) 736-5749 Contact: James Chrisman	Century Link (503) 242-4144 Contact: Scott Miller	
Clackamas County Traffic Maintenance (503) 650-3711 Contact: Dorian Libal	Level 3 Communications (503) 416-1514 Contact: Scott Wynkoop	



LOCATION MAP

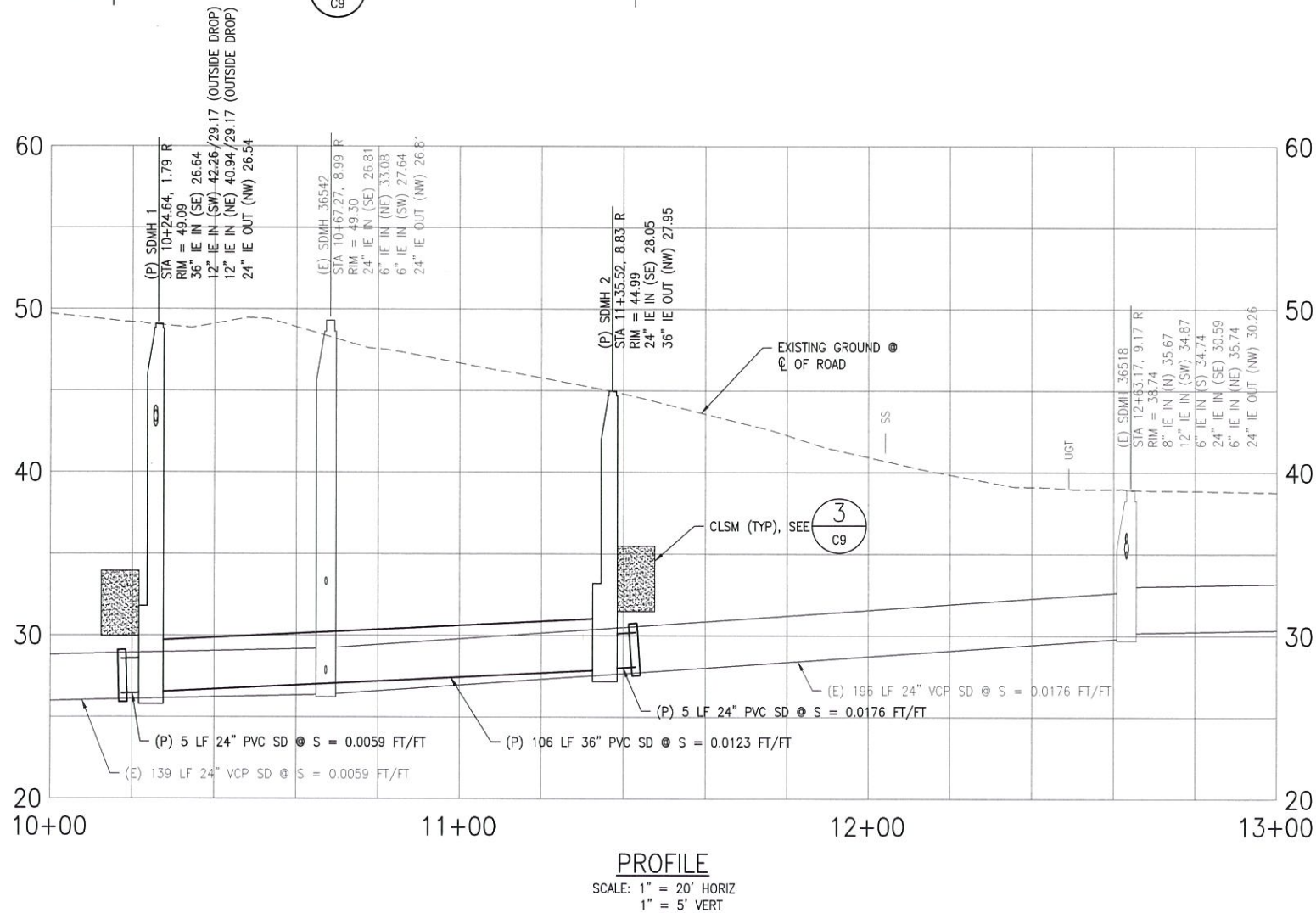
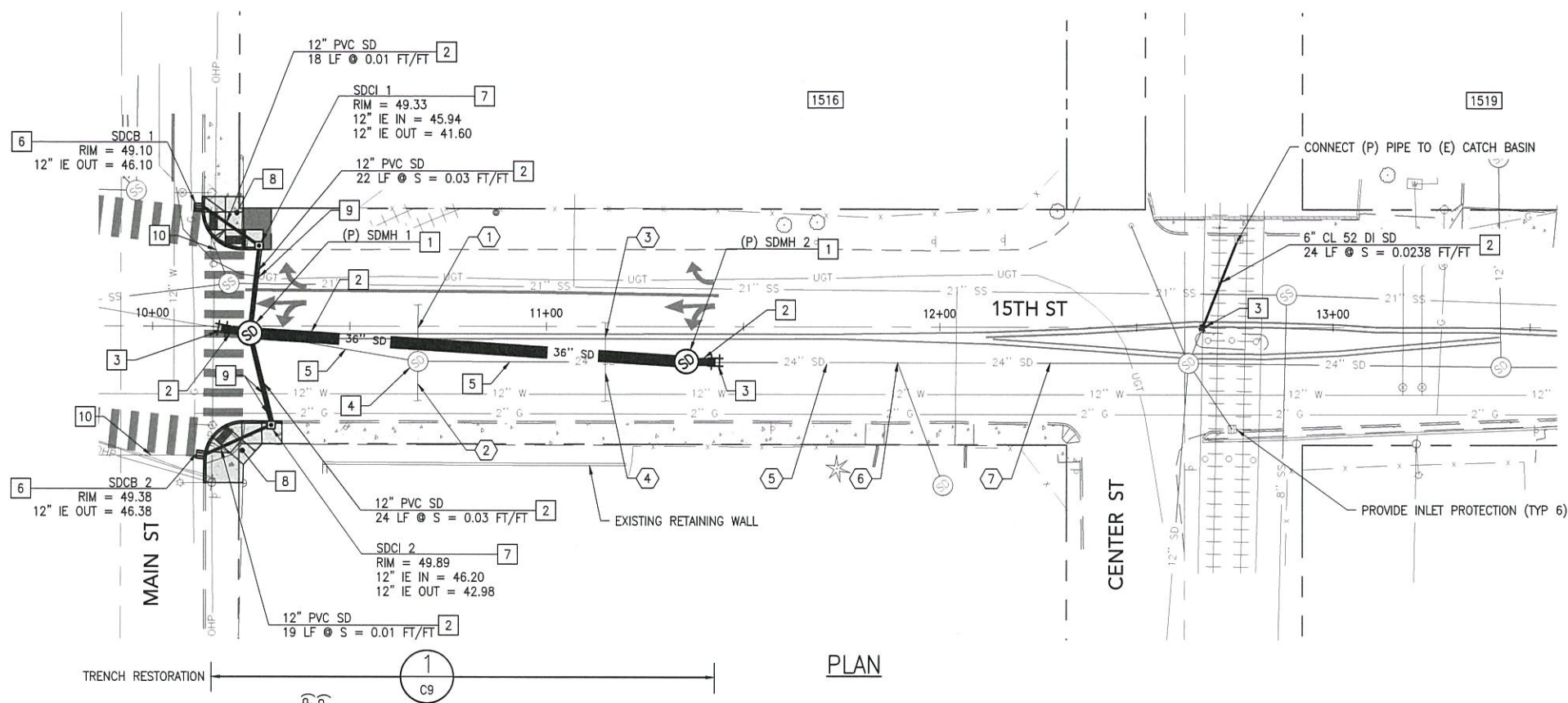
NOT TO SCALE

SHEET INDEX

- | | |
|-----|--|
| C1 | COVER |
| C2 | GENERAL NOTES & LEGEND |
| C3 | EROSION CONTROL NOTES & DETAILS |
| C4 | PLAN & PROFILE MAIN ST TO CENTER ST |
| C5 | PLAN & PROFILE JQ ADAMS ST TO JACKSON ST |
| C6 | CURB RAMP DETAILS |
| C7 | BYPASS PUMPING PLAN A |
| C8 | BYPASS PUMPING PLAN B & C |
| C9 | DETAILS |
| C10 | OREGON CITY STANDARD DETAILS I |
| C11 | OREGON CITY STANDARD DETAILS II |
| C12 | ODOT STANDARD DETAILS I |
| C13 | ODOT STANDARD DETAILS II |

Attention Excavators: Oregon Law requires the contractor to follow rules adopted by the Oregon Utility Notification Center. Those rules are set forth in OAR 952-001-0010 through OAR 952-001-0090. The contractor may obtain copies of these rules from the center by calling (503) 232-1987 or by accessing the Internet at www.state.or.us/government.htm. The contractor must notify the center at least 2 business days, but not more than 10 business days, before commencing an excavation. Call (503) 246-6699.

P:\14\1440A OC 15th St Storm Sewer Imp\S00 DWG\S01 Plan Sheets\4-5 PLAN & PROFILE SHEETS.dwg, 2/22/2018 11:27:28 AM, Chad Kays



KEY NOTES

1. CONSTRUCT STANDARD 60-INCH MANHOLE PER CITY STANDARD DRAWING NO 608.
2. CONSTRUCT NEW STORM PIPE OF MATERIAL AND DIAMETER NOTED.
3. CONNECT TO EXISTING STORM SEWER PIPE (DIAMETER NOTED) WITH COUPLING EQUIPPED WITH STAINLESS STEEL SHEAR RING. BACKFILL ABOVE THE PIPE ZONE WITH CLSM WHEN CONNECTING TO EXISTING CLAY PIPE. SEE TRENCH DETAILS, SHEET C9.
4. REMOVE EXISTING MANHOLE.
5. REMOVE EXISTING STORM PIPE.
6. REMOVE AND REPLACE EXISTING CATCH BASIN WITH TYPE 4 CATCH BASIN PER CITY STANDARD DRAWING 610-5. INCLUDE 2" (MIN) PRECAST RISER BETWEEN BASE AND RIM.
7. INSTALL NEW CURB INLET WITH CG-3 TOP PER CITY STANDARD DRAWING 609.
8. REMOVE AND REPLACE EXISTING CURB RAMP, SEE SHEET C6 FOR DETAILS.
9. POTHOLE EXISTING UTILITY PRIOR TO CORING MANHOLE SECTIONS AND PRIOR TO NEW STORM MAINLINE OR LATERAL INSTALLATION. REPORT CONFLICTS TO ENGINEER IMMEDIATELY.
10. REMOVE OR ABANDON EXISTING STORM LATERAL. REFER TO SECTION 00330.41 FOR REQUIREMENTS FOR ABANDONING PIPES.

PIPE MATERIAL NOTES

1. EXCEPT WHERE NOTED, ALL STORM SEWERS AND LATERALS SHALL BE CONSTRUCTED FROM SOLID WALL GASKETED PVC GRAVITY SEWER PIPE. PROFILE WALL PIPE WILL NOT BE ALLOWED.
2. PVC STORM SEWER PIPE WITH 21" OR GREATER NOMINAL DIAMETER SHALL BE ASTM F679 PS46 (MIN). PVC STORM SEWER PIPE OF LESS THAN 21" NOMINAL DIAMETER SHALL BE ASTM D3034 DR35 (MIN).

TRAFFIC CONTROL NOTES

1. CONTRACTOR MAY CLOSE 15TH STREET BETWEEN MAIN STREET AND WASHINGTON STREET WITH APPROVED DETOUR FOR ALL STORM SEWER WORK. HOSPITAL DETOUR SIGNS WILL BE REQUIRED. COORDINATE CLOSURE WITH CLACKAMAS COUNTY SIGNALS FOR MODIFICATION TO THE WASHINGTON STREET SIGNAL.
2. CONTRACTOR SHALL PROVIDE FLAGGING PERSONNEL AND FOR ALL WORK IMPACTING THE INTERSECTION OF 15TH AND MAIN STREET.
3. CONTRACTOR SHALL COORDINATE ALL DETOURS WITH TRIMET, EMERGENCY SERVICES AND OTHER PUBLIC SERVICES.
4. CONTRACTOR SHALL MAINTAIN ACCESS TO PROPERTIES THROUGH ALL PHASES OF THE WORK AND COORDINATE ALL TEMPORARY ACCESS DISRUPTIONS WITH PROPERTY OWNERS.

EXISTING LATERAL INFORMATION*

LATERAL	STA	DIST. FROM UPSTREAM MH	MATERIAL	DESCRIPTION
①	10+67	197'	VCP	3 O'CLOCK, ENTERING MANHOLE
②	10+67	197'	VCP	9 O'CLOCK, ENTERING MANHOLE, LOOKS WET
③	11+14	149'	VCP	2 O'CLOCK TAP, SEDIMENT IN LATERAL
④	11+14	149'	VCP	10 O'CLOCK TAP, SEDIMENT IN LATERAL
⑤	11+72	92'	VCP	12 O'CLOCK TAP, LOOKS DRY, OFFSET JOINT
⑥	11+90	74'	PVC	10 O'CLOCK TAP, LIVE
⑦	12+29	35'	VCP	12 O'CLOCK TAP, LOOKS DRY, OFFSET JOINT

* THE CONTRACTOR SHALL INVESTIGATE EXISTING LATERALS SHOWN IN THE TABLE TO DETERMINE WHETHER THEY ARE ACTIVE OR INACTIVE. ACTIVE LATERALS SHALL BE REPAIRED AND CONNECTED TO EXISTING/PROPOSED STORM MAIN. INACTIVE LATERALS SHALL BE ABANDONED. REFER TO SPECIFICATIONS FOR DETAILS.

MANHOLE COORDINATE TABLE*

MH	EASTING	NORTHING
1	76662205.7888	625444.0156
2	7662290.2484	625371.8319

* SEE BASIS OF BEARING ON SHEET C2



NO.	REVISION	BY	DATE

DESIGNED BY: NA/JP
CHECKED BY: CK
SCALE: 1" = 100'
SCALE ADJUSTING: WMW

PLAN & PROFILE MAIN ST
TO CENTER ST

wallis engineering
215 W 4th Street, Suite 200
Portland, OR 97204
503.985.7041

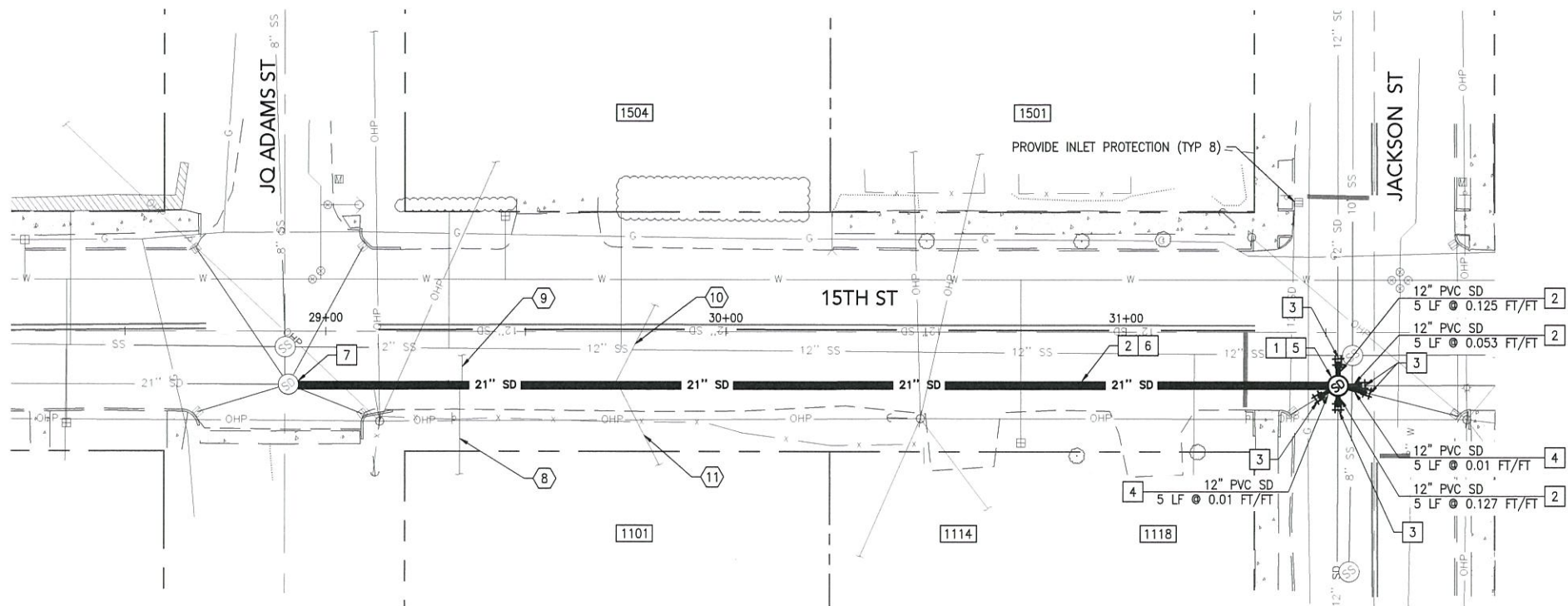
PROJECT NO: 1440A
DATE: 2/2018

15TH STREET STORM
SEWER IMPROVEMENTS
PS 17-015/CI 17-009

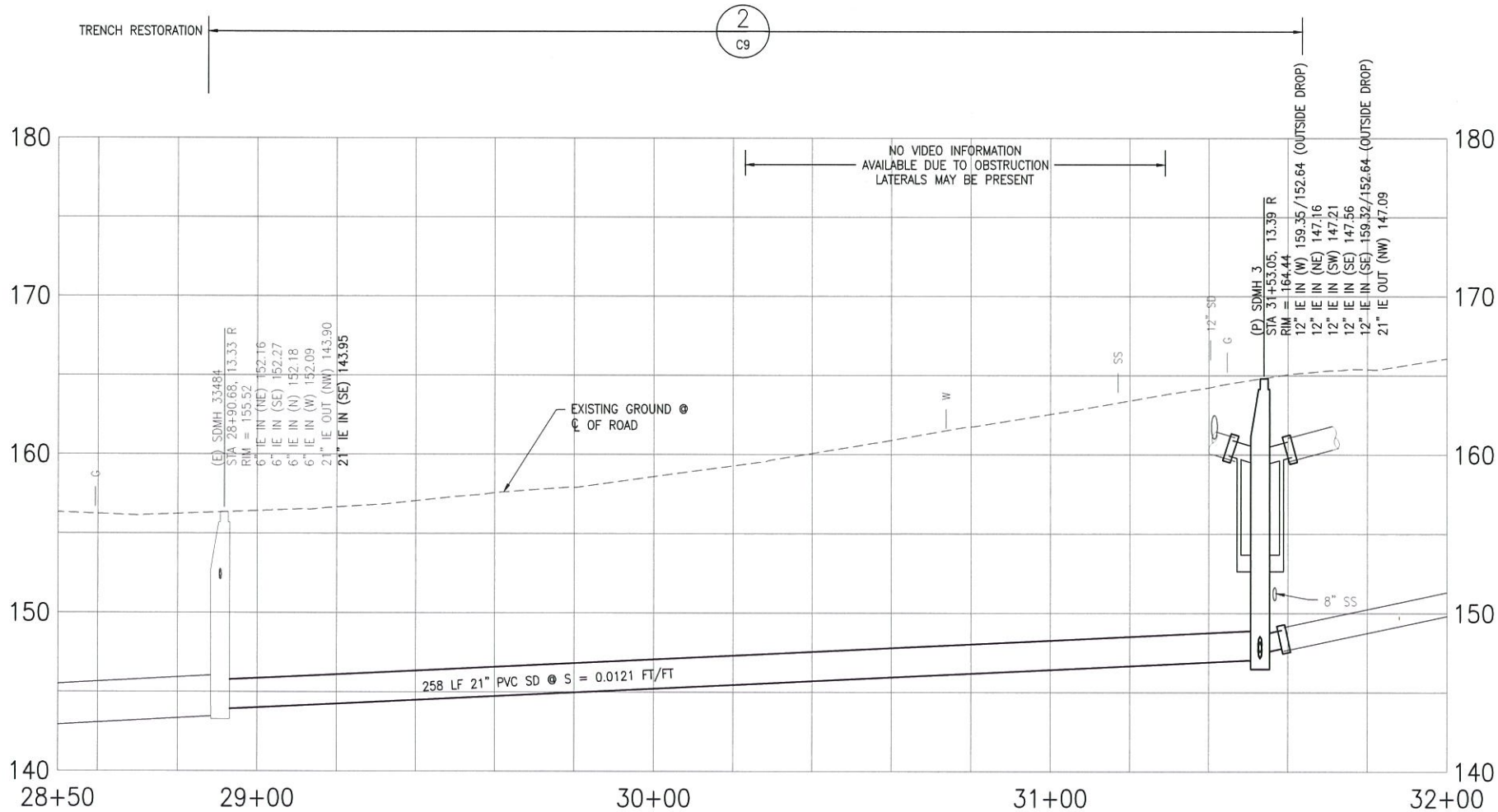
OREGON CITY

DRAWING NO:
C4
4 OF 13

P:\14\1440A OC 15th St Storm Sewer Imp\500 DWG\501 Plan Sheets\1-5 PLAN & PROFILE SHEETS.dwg, 2/22/2018 11:27:41 AM, Chad Kays



PLAN



PROFILE

SCALE: 1" = 20' HORIZ
1" = 5' VERT

KEY NOTES

- 1 CONSTRUCT STANDARD 48-INCH MANHOLE PER CITY STANDARD DRAWING NO 301.
- 2 CONSTRUCT NEW STORM PIPE OF MATERIAL AND DIAMETER NOTED.
- 3 CONNECT TO EXISTING STORM SEWER PIPE (DIAMETER NOTED) WITH COUPLING EQUIPPED WITH STAINLESS STEEL SHEAR RING. BACKFILL ABOVE THE PIPE ZONE WITH CLSM WHEN CONNECTING TO EXISTING CLAY PIPE. SEE TRENCH DETAILS, SHEET C9.
- 4 INSTALL DROP MANHOLE CONNECTIONS PER CITY STANDARD DRAWING NO. 303.
- 5 REMOVE EXISTING MANHOLE.
- 6 REMOVE EXISTING STORM PIPE.
- 7 CONNECT PROPOSED SEWER TO EXISTING MANHOLE.

PIPE MATERIAL NOTES

1. EXCEPT WHERE NOTED, ALL STORM SEWERS AND LATERALS SHALL BE CONSTRUCTED FROM SOLID WALL GASKETED PVC GRAVITY SEWER PIPE. PROFILE WALL PIPE WILL NOT BE ALLOWED.
2. PVC STORM SEWER PIPE WITH 21" OR GREATER NOMINAL DIAMETER SHALL BE ASTM F679 PS46 (MIN). PVC STORM SEWER PIPE OF LESS THAN 21" NOMINAL DIAMETER SHALL BE ASTM D3034 DR35 (MIN).

TRAFFIC CONTROL NOTES

1. CONTRACTOR SHALL INSTALL NO PARKING SIGNS WITHIN THE WORKZONE A MINIMUM OF 48 HOURS PRIOR TO WORK. TWO LANES OF TRAVEL SHALL BE PROVIDED ON 15TH STREET UNLESS APPROVED OTHERWISE BY THE CITY.
2. THE CONTRACTOR SHALL PROVIDE FLAGGING PERSONNEL WHEN TRAFFIC IS LIMITED TO 1 LANE AND FOR ALL WORK IMPACTING THE INTERSECTION OF 15TH AND JACKSON STREET.
3. CONTRACTOR SHALL MAINTAIN ACCESS TO PROPERTIES THROUGH ALL PHASES OF THE WORK AND COORDINATE ALL TEMPORARY ACCESS DISRUPTIONS WITH PROPERTY OWNERS.

EXISTING LATERAL INFORMATION*

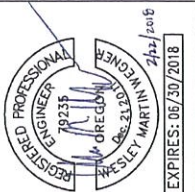
LATERAL	STA	DIST. FROM DOWNSTREAM MH	MATERIAL	DESCRIPTION
8	29+33	41'	VCP	2 O'CLOCK TAP, LOOKS DRY
9	29+34	42'	VCP	10 O'CLOCK TAP, LOOKS DRY
10	29+72	79'	VCP	10 O'CLOCK WYE, LOOKS WET
11	29+75	81'	VCP	2 O'CLOCK WYE, LOOKS DRY

* THE CONTRACTOR SHALL INVESTIGATE EXISTING LATERALS SHOWN IN THE TABLE TO DETERMINE WHETHER THEY ARE ACTIVE OR INACTIVE. ACTIVE LATERALS SHALL BE REPAIRED AND CONNECTED TO EXISTING/PROPOSED STORM MAIN. INACTIVE LATERALS SHALL BE ABANDONED. REFER TO SPECIFICATIONS FOR DETAILS.

MANHOLE COORDINATE TABLE*

MH	EASTING	NORTHING
3	7663901.2540	624157.2920

* SEE BASIS OF BEARING ON SHEET C2



NO.	REVISION	BY	DATE

DESIGNED BY: NA/JP
CHECKED BY: CK
SCALE: 1" = 10' AT FULL SCALE. IF NOT ONE INCH ADJUST SCALE ACCORDINGLY.

PLAN & PROFILE JQ ADAMS ST TO JACKSON ST



PROJECT NO: 1440A
DATE: 2/2018

15TH STREET STORM SEWER IMPROVEMENTS

PS 17-015/CI 17-009



DRAWING NO:

C5

5 OF 13