

# OREGON CITY PUBLIC WORKS

## OPERATIONS CENTER

Historic Review Board Meeting





2009 MASTER PLAN



2017 MASTER PLAN AMENDMENT

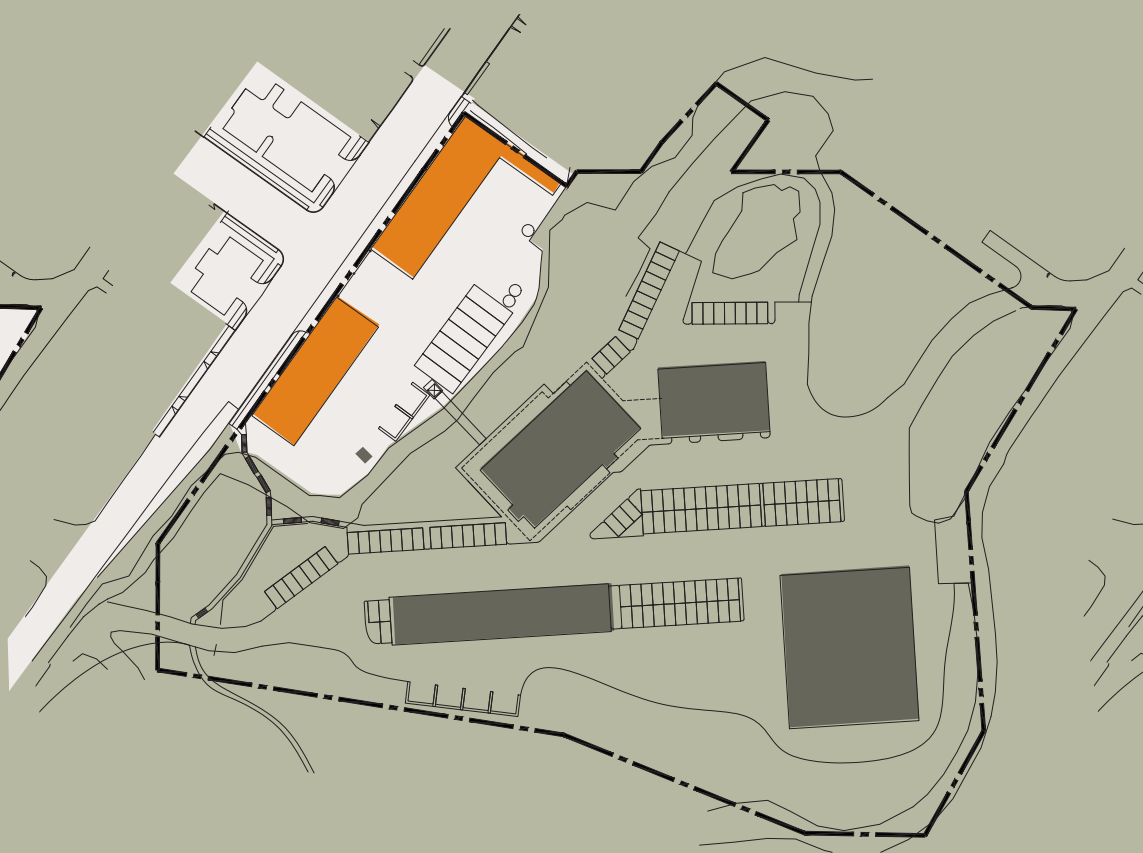
KEY CHANGES

- LARGE TRUCKS ON LOWER LEVEL
- SMALL VEHICLES ON UPPER LEVEL
- MOVED OFFICES TO UPPER LEVEL (OPERATIONS STAFF ONLY)
- ROCK OUTCROPPING & WHITE OAKS PRESERVED
- BINS MOVED AWAY FROM BLUFF
- MOST BIN STORAGE AT OTHER SITES
- HISTORIC ARCHITECTURAL CHARACTER
- UTILIZING EXISTING ARMORY FOR CITY FLEET MAINTENANCE SHOP
- 2009 BUILDING SF: 67,285 SF VS. 2017 BUILDING SF: 53,723 SF



PHASE I

EXISTING STRUCTURES  
NEW BUILDING CONSTRUCTION  
NEW PARKING CONSTRUCTION



PHASE II

EXISTING STRUCTURES  
NEW BUILDING CONSTRUCTION  
NEW PARKING CONSTRUCTION



PHASE III

EXISTING STRUCTURES  
NEW BUILDING CONSTRUCTION  
NEW PARKING CONSTRUCTION





**TREE LEGEND**  
EXISTING  
NEW / PROPOSED

LARGE EQUIP COUNT	
INDOOR	6
COVERED	13
OUTDOOR	7
TOTAL	26

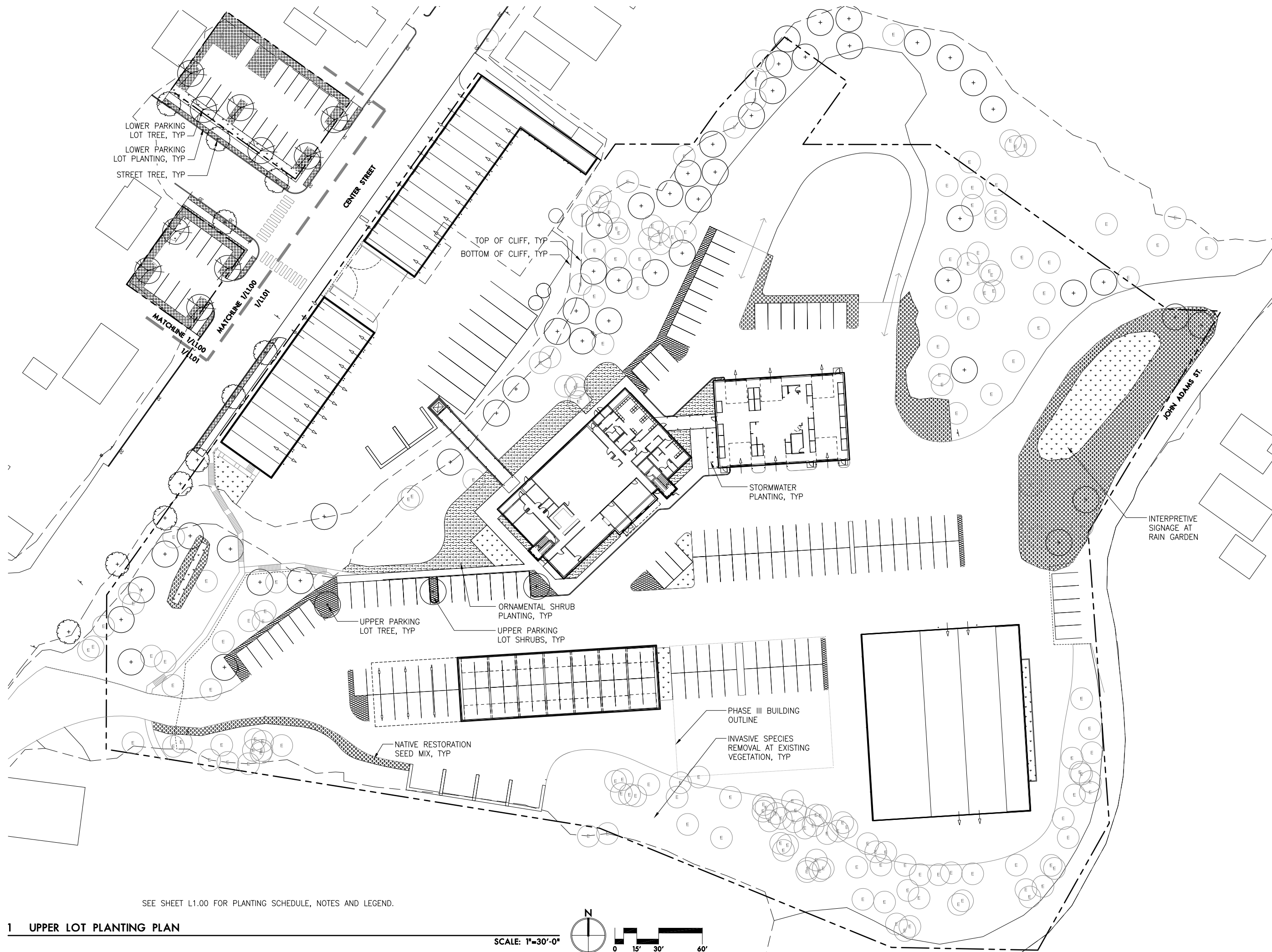
SMALL & MEDIUM EQUIP COUNT	
INDOOR	28
COVERED	12
OUTDOOR	31
TOTAL	71

STAFF & PUBLIC PARKING	
OUTDOOR	79
ADDITIONAL	22
TOTAL PARKING	198

**BUILDING COLOR KEY**  
NEW - INDOOR  
NEW - COVERED  
RENOVATED - INDOOR  
FUTURE EXPANSION







LOWER PARKING  
LOT TREE, TYP  
LOWER PARKING  
LOT PLANTING, TYP  
STREET TREE, TYP

MATCHLINE 1/1.00  
1/1.01

MATCHLINE 1/1.00  
1/1.01

CENTER STREET

TOP OF CLIFF, TYP  
BOTTOM OF CLIFF, TYP

STORMWATER  
PLANTING, TYP

UPPER PARKING  
LOT TREE, TYP

ORNAMENTAL SHRUB  
PLANTING, TYP  
UPPER PARKING  
LOT SHRUBS, TYP

NATIVE RESTORATION  
SEED MIX, TYP

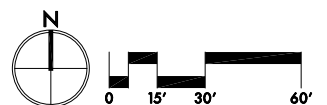
PHASE III BUILDING  
OUTLINE  
INVASIVE SPECIES  
REMOVAL AT EXISTING  
VEGETATION, TYP

INTERPRETIVE  
SIGNAGE AT  
RAIN GARDEN

JOHN ADAMS ST.

SEE SHEET L1.00 FOR PLANTING SCHEDULE, NOTES AND LEGEND.

SCALE: 1"=30'-0"

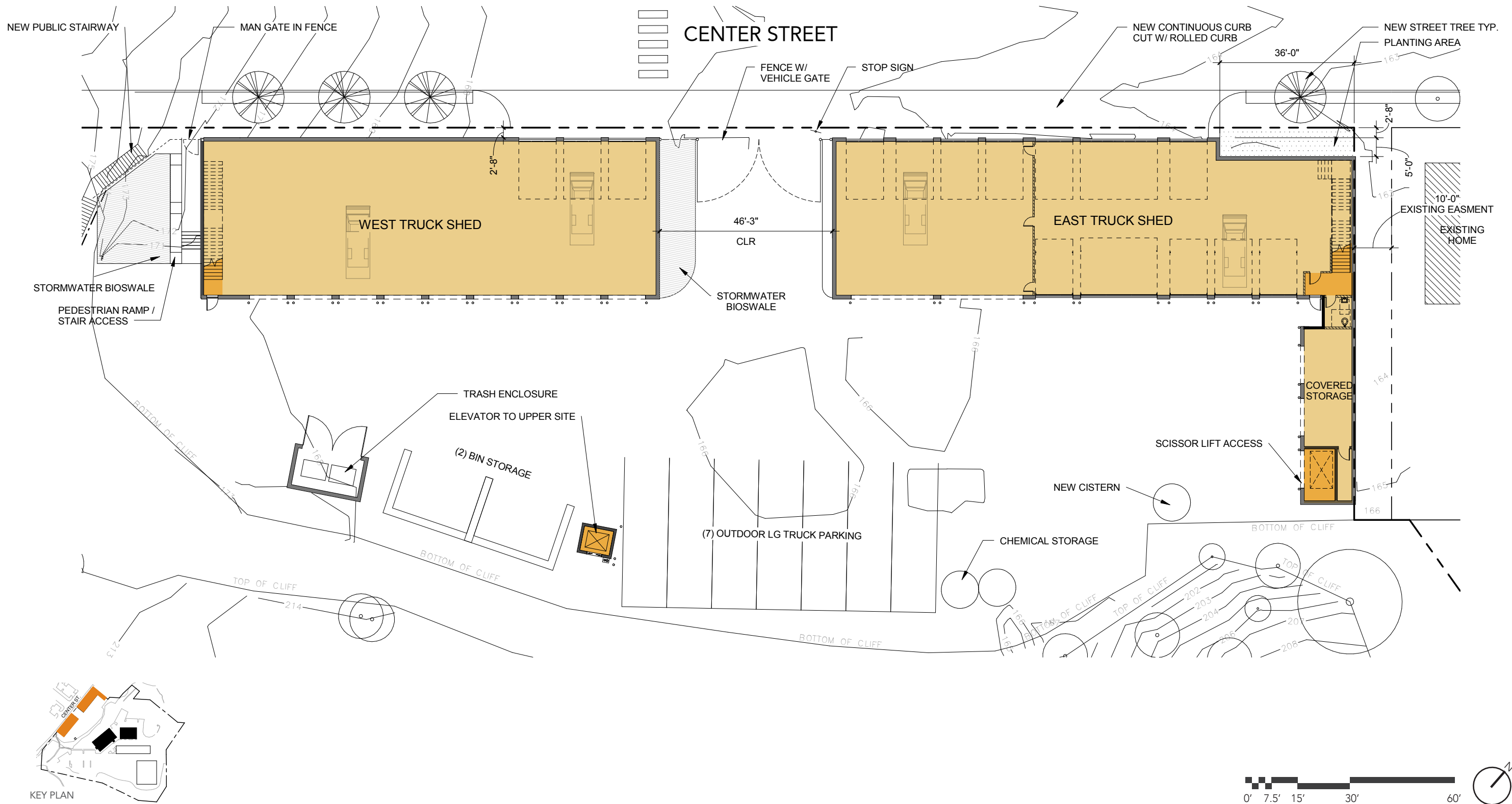


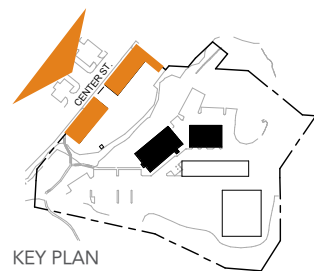
**d**  
**deca**  
**architecture.inc**  
935 SE Alder Street · Portland Oregon 97214  
tel 503 239 1987 fax 503 239 6558 deca-inc.com

OREGON CITY PUBLIC WORKS  
**OPERATIONS CENTER**  
122 S. CENTER ST.  
OREGON CITY, OR  
97045

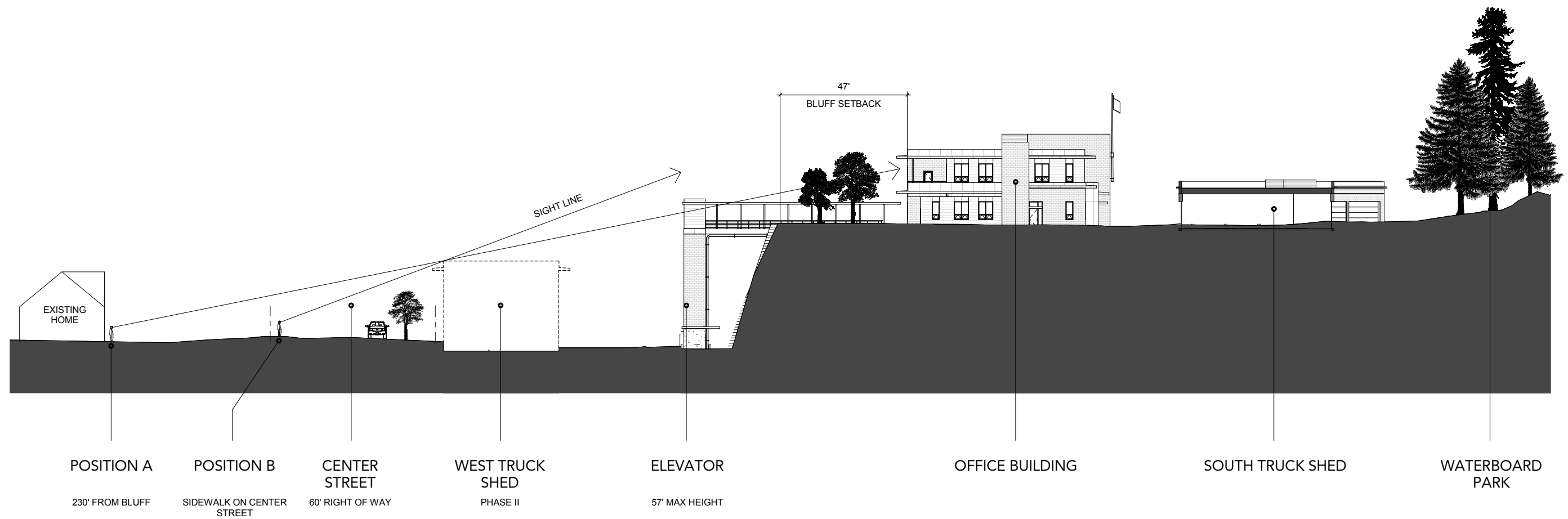
**lango.hansen**  
LANDSCAPE ARCHITECTS  
1100 NW Glisan #3b  
portland or 97209

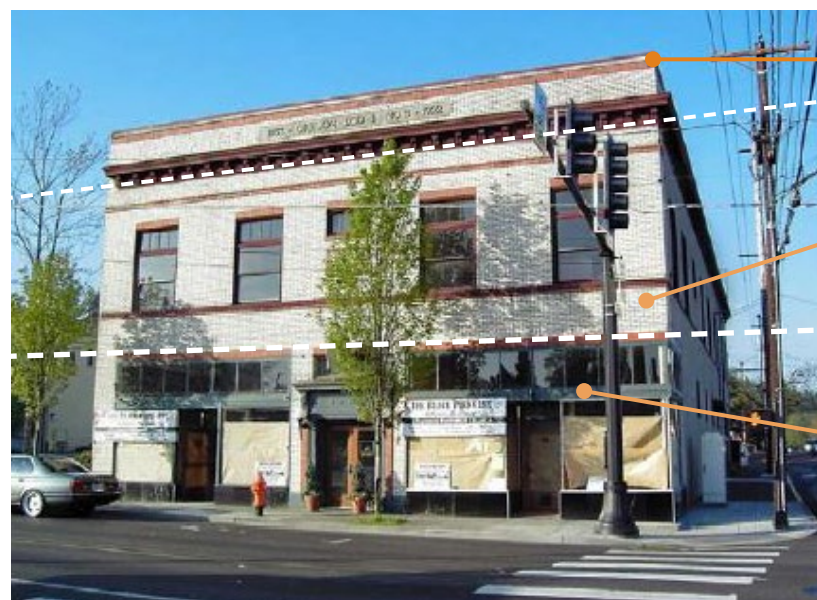
**Upper Lot Planting Plan**  
Scale As Noted  
Date 20 March, 2017  
Sheet No. **L101**











I.O.O.F COMMERCIAL BUILDING



SELLWOOD COMMERCIAL BUILDING

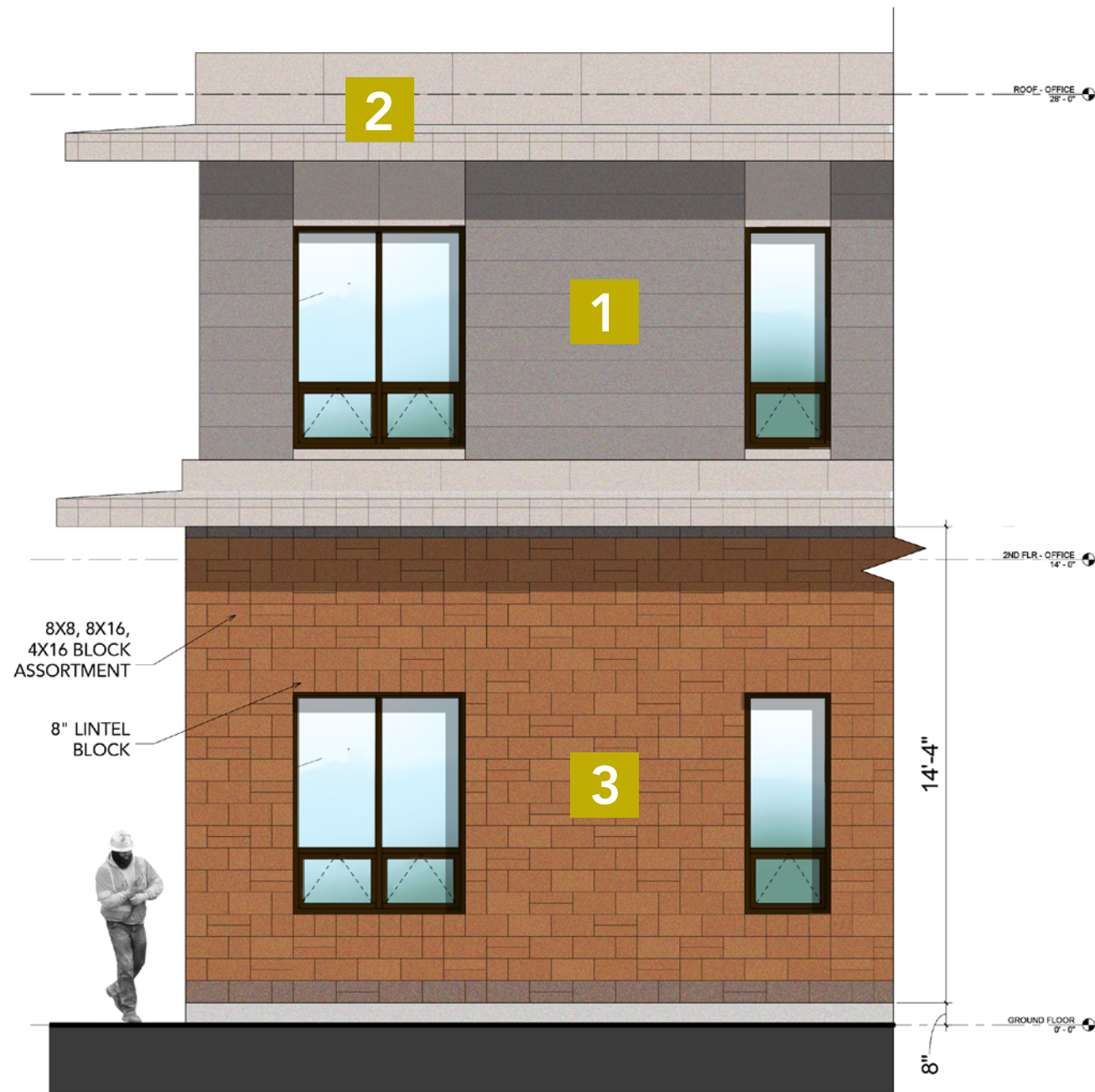












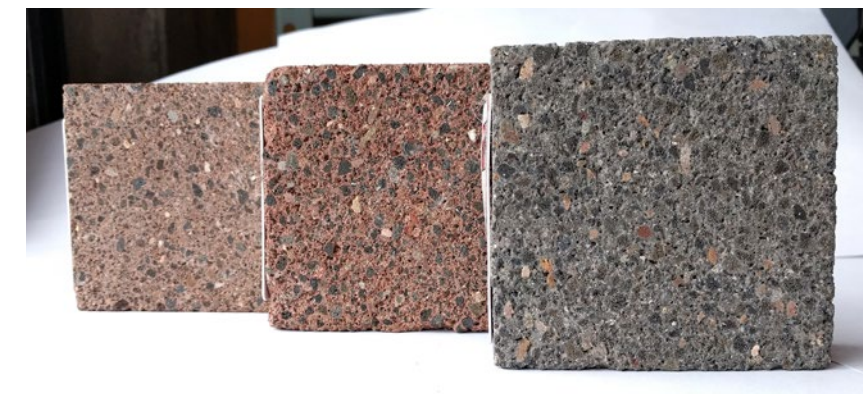
OFFICE PARTIAL ELEVATION - MATERIALS & PATTERNING



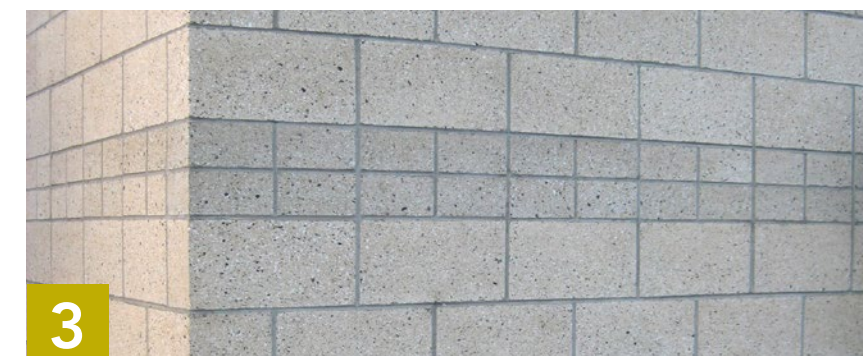
FLAT METAL PANELS



COMPOSITE METAL PANELS



GROUND FACE CMU COLOR & TEXTURE SAMPLES



GROUND FACE CMU FINISHED SAMPLE