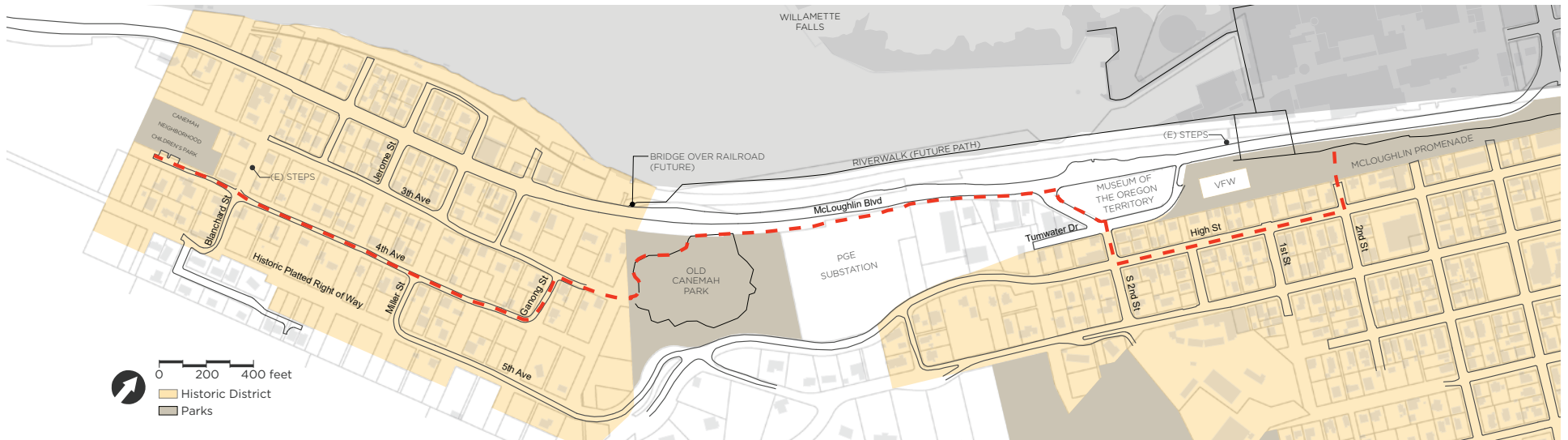


INTERIM TRAIL RECOMMENDATION



SUMMARY DESCRIPTION

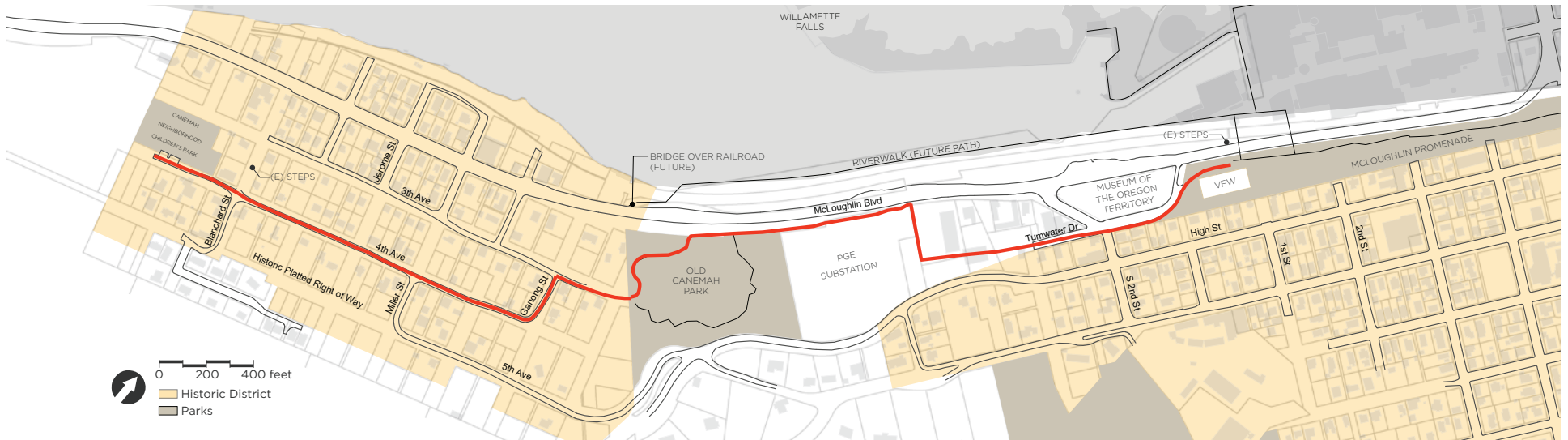
The interim trail alignment recommendation begins at the McLoughlin Promenade and connects via 2nd Street to High Street. From there, the trail turns onto S. 2nd Street and continues west to McLoughlin Blvd/Hwy 99E. Using the exiting traffic signal crossing, the trail continues on the east side of McLoughlin Blvd/Hwy 99E until reaching the Portland General Electric (PGE) substation entrance.

From the PGE entrance, the interim and long term trail recommended alignments are identical. The trail connects between the PGE substation and McLoughlin Blvd/Hwy 99E, enters Old Canemah Park, and connects to the Canemah National Register District neighborhood. The route through the neighborhood follows Marshall Street and 3rd Avenue west/southwest, turns onto Ganong Street, and follows 4th Avenue until reaching the Canemah Neighborhood Children's Park.

DESIGN ASSUMPTIONS

- Wayfinding and shared use signage and pavement markings between 2nd Street and McLoughlin Blvd
- Widen trail through Old Canemah Park
- Traffic calming, signs, and pavement markings for shared Family Friendly Street on 3rd Ave, Ganong St, and 4th Ave.
- Reinforcement at top of basalt cliff along McLoughlin Blvd

LONG-TERM TRAIL RECOMMENDATION



SUMMARY DESCRIPTION

The long term trail alignment recommendation begins at the McLoughlin Promenade and connects to Tumwater Drive via the Three Rivers VFW Post 1324 parking lot and a dedicated non-motorized path down the existing driveway. From there, the trail follows Tumwater Drive, crosses at S. 2nd Street, and continues south/southwest on Tumwater Drive through re-developed parcels, turning toward McLoughlin Blvd/Hwy 99E just north of the Portland General Electric (PGE) substation property.

From the PGE entrance, the interim and long term trail recommended alignments are identical. The trail connects between the PGE substation and McLoughlin Blvd/Hwy 99E, enters Old Canemah Park, and connects to the Canemah National Register District neighborhood. The route through the neighborhood follows Marshall Street and 3rd Avenue west/southwest, turns onto Ganong Street, and follows 4th Avenue until reaching the Canemah Neighborhood Children's Park.

DESIGN ASSUMPTIONS

- New automobile connection to/from VFW via 1st Street allows dedicated ped-bike connection to Tumwater Dr
- Widen sidewalk to shared use path width along Tumwater Dr
- Intersection crossing at S 2nd Ave and Tumwater Drive re-designed for safety
- Re-development of parcels between McLoughlin Blvd and Tumwater Dr south/southwest of S. 2nd Avenue.
- Widen trail through Old Canemah Park
- Traffic calming, signs, and pavement markings for shared Family Friendly Street on 3rd Ave, Ganong St, and 4th Ave.
- Cost estimate includes reinforcement at top of basalt cliff.