

From: John M. Lewis
To: Lisa Oreskovich; Christina Robertson-Gardiner; Pete Walter; Phil Lewis; Jonathan Waverly; Bill Kier
Subject: FW: 82nd Ave Bike/Ped Bridge Upcoming (9-month) Closure Starting Sept 2017 for County Bridge Construction
Date: Friday, July 28, 2017 5:27:39 PM
Attachments: 82nd Bridge Map.JPG

FYI.

Please consider sharing this information at your upcoming committee meetings.

From: Aleta Froman-Goodrich

Sent: Friday, July 28, 2017 8:26 AM

To: John M. Lewis <jmlewis@orcity.org>; Tony Konkol <tkonkol@orcity.org>; Laura Terway <lterway@orcity.org>; Phil Lewis <plewis@orcity.org>

Cc: Eric Underwood <eunderwood@orcity.org>; Denise Conrad <dconrad@orcity.org>; Martin Montalvo <mmontalvo@orcity.org>; Kattie Riggs <kriggs@orcity.org>; Pam Harris <pharris@orcity.org>

Subject: 82nd Ave Bike/Ped Bridge Upcoming (9-month) Closure Starting Sept 2017 for County Bridge Construction

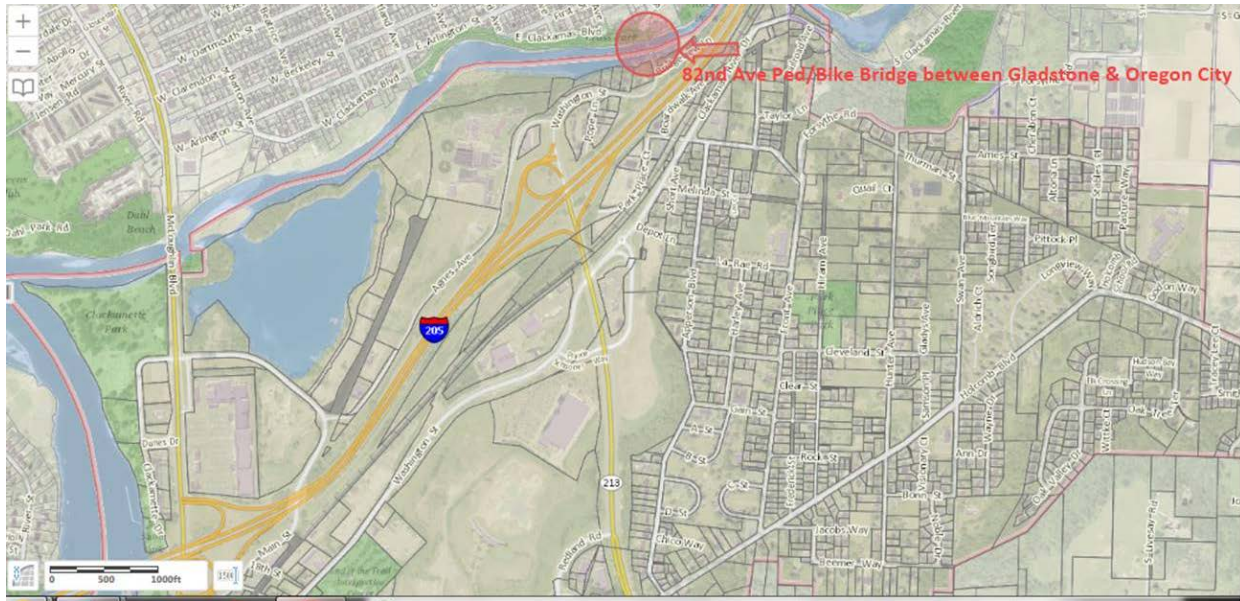
Hello All,

I wanted to inform you of a project that Clackamas County Water Environment Services (WES) will be starting in September 2017 that will be CLOSING the 82nd Drive Pedestrian/Bike Bridge between Gladstone and Oregon City for approximately 9 months starting September 2017.

The following are the details that were provided by WES at a recent meeting I attended:

- WES will be awarding a construction contract in September 2017 to perform the following work:
 - Structurally retrofit the bridge to withstand the predicted "9.0" earthquake.
 - Construct 30-inch diameter sanitary sewer pipe along the downstream side of the bridge and extend 50 feet beyond the bridge on both sides of the bridge.
 - Note: This 30-inch pipe will not be placed into operation until the future phases are installed that extends the pipe on both sides.
 - On the Oregon City side, the future 30-inch pipe will be connected to the piping system at TriCity wastewater treatment plant along Agnes Ave.
- The ped/bike bridge will be CLOSED to all traffic during the construction of the above listed improvements.
 - The bridge closure is expected to be from Sept 2017 through May 2018 (approximately 9 months).
 - WES will be working with the contractor to open the bridge to pedestrian/bike traffic as soon as it is safe to do so, and minimize the closure to the maximum extent practicable.
 - Detours for ped/bike traffic will be put into place upon closing the bridge.
 - WES is working on a Public Information Campaign that they hope to start up in August 2017.
 - WES will continue to provide updates to Oregon City and Gladstone.
 - Public information material will be distributed to both cities when available.
 - Oregon City will be helping to get the word out through the City's website, social media and other communication tools as applicable once WES starts their public information campaign.

Please let me know if you have any questions.



Thanks,
Aleta



Aleta Froman-Goodrich, PE
City Engineer
Public Works Department
City of Oregon City
625 Center Street
Oregon City, Oregon 97045
Email: alfromgoodrich@orcity.org
503.496.1570 Direct dial
503.657.0891 City hall
503.657.7892 fax

Website: www.orcity.org | webmaps.orcity.org | Follow us on: [Facebook](https://www.facebook.com/orcity) | [Twitter](https://twitter.com/orcity)
Think **GREEN** before you print.

Public Works/Engineering Counter hours at City Hall, 625 Center Street, are Monday through Thursday, 9 AM to 4 PM.
The counter is closed each Friday to walk-in customers.

City Hall hours remain Monday through Friday, 8 AM to 5 PM (except holidays).

PUBLIC RECORDS LAW DISCLOSURE: This e-mail is subject to the State Retention Schedule and may be made available to the public.