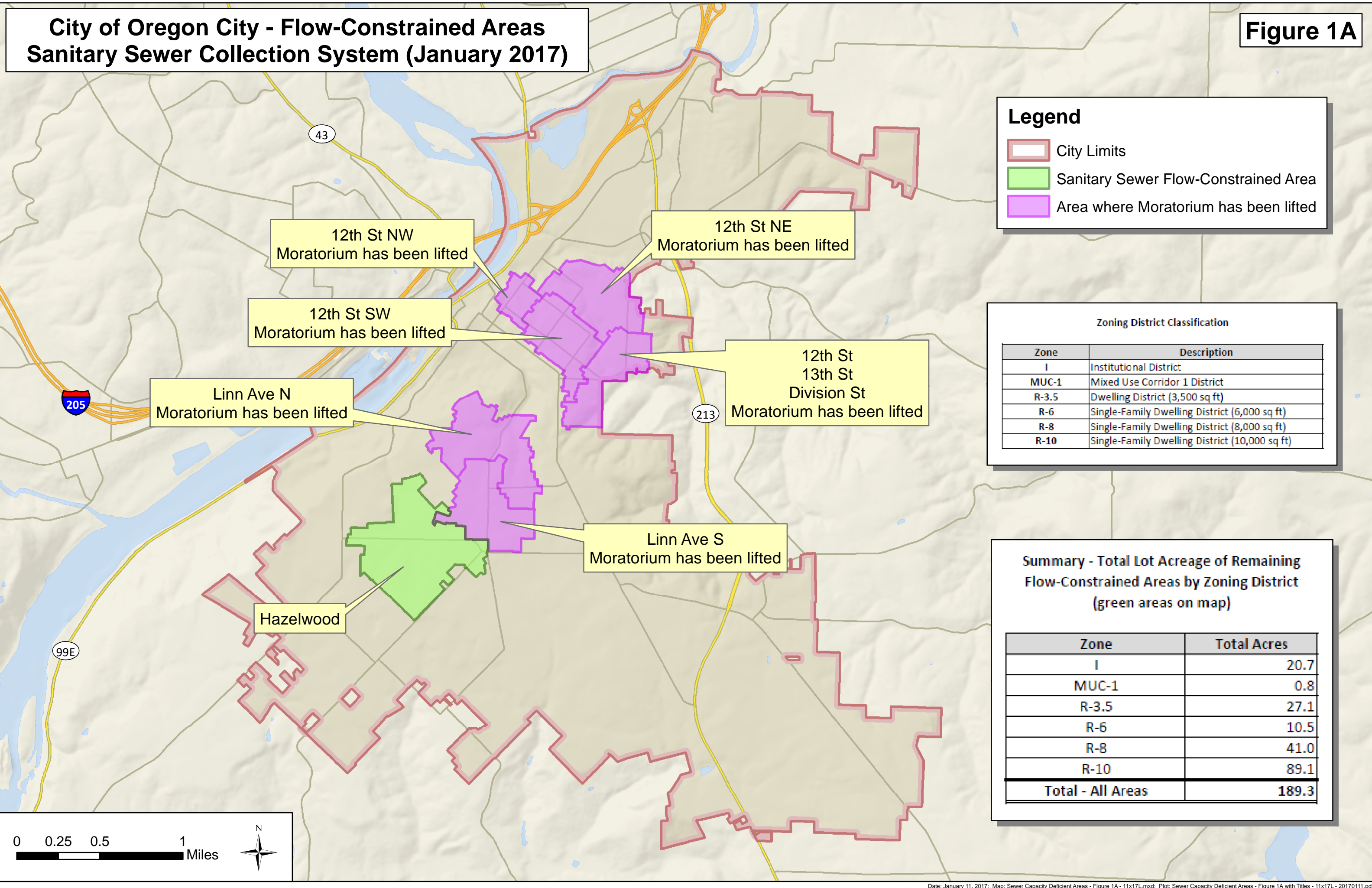


City of Oregon City - Flow-Constrained Areas
Sanitary Sewer Collection System (January 2017)

Figure 1A



Legend

- City Limits
- Sanitary Sewer Flow-Constrained Area
- Area where Moratorium has been lifted

Zoning District Classification	
Zone	Description
I	Institutional District
MUC-1	Mixed Use Corridor 1 District
R-3.5	Dwelling District (3,500 sq ft)
R-6	Single-Family Dwelling District (6,000 sq ft)
R-8	Single-Family Dwelling District (8,000 sq ft)
R-10	Single-Family Dwelling District (10,000 sq ft)

Summary - Total Lot Acreage of Remaining Flow-Constrained Areas by Zoning District (green areas on map)	
Zone	Total Acres
I	20.7
MUC-1	0.8
R-3.5	27.1
R-6	10.5
R-8	41.0
R-10	89.1
Total - All Areas	189.3