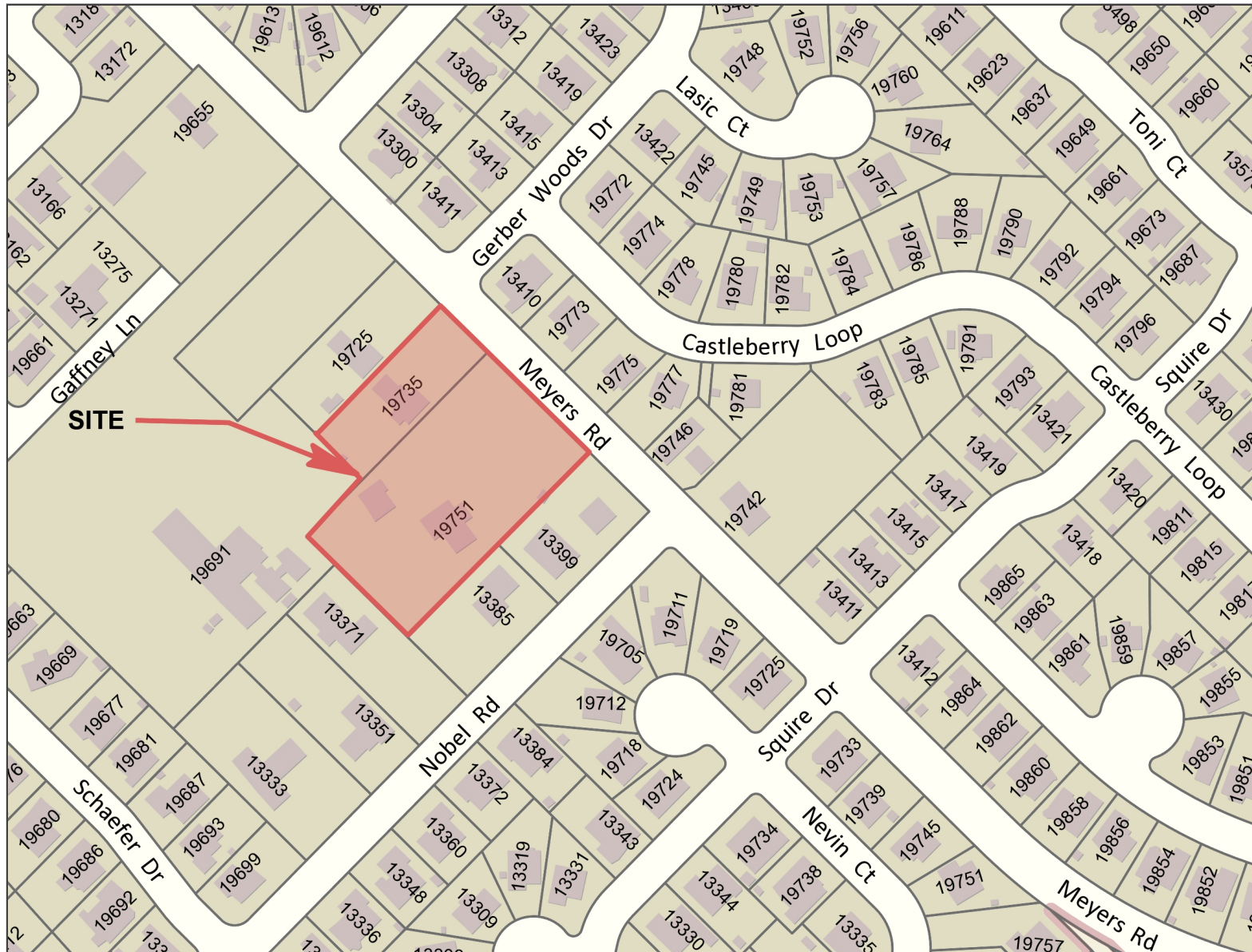


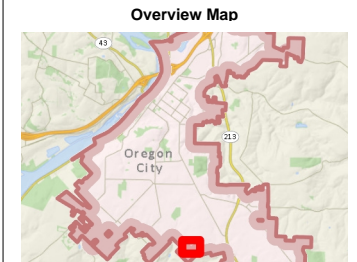
# Oregon City GIS Map



- Legend**
- Taxlots
  - Taxlots (Outside UGB)
  - Unimproved ROW
  - City Limits
  - UGB
  - Basemap

**Notes**

Small Slope subdivision (19751 and 19735 Meyers Road)



0 200 400 Feet

1: 2,400

The City of Oregon City makes no representations, express or implied, as to the accuracy, completeness and timeliness of the information displayed. This map is not suitable for legal, engineering, surveying or navigation purposes. Notification of any errors is appreciated.



Map created 9/23/2016

City of Oregon City  
PO Box 3040  
625 Center St  
Oregon City  
OR 97045  
(503) 657-0891  
[www.orecity.org](http://www.orecity.org)

