



*The Cove*

STREET VIEW - LEFT SIDE OF LOT 5

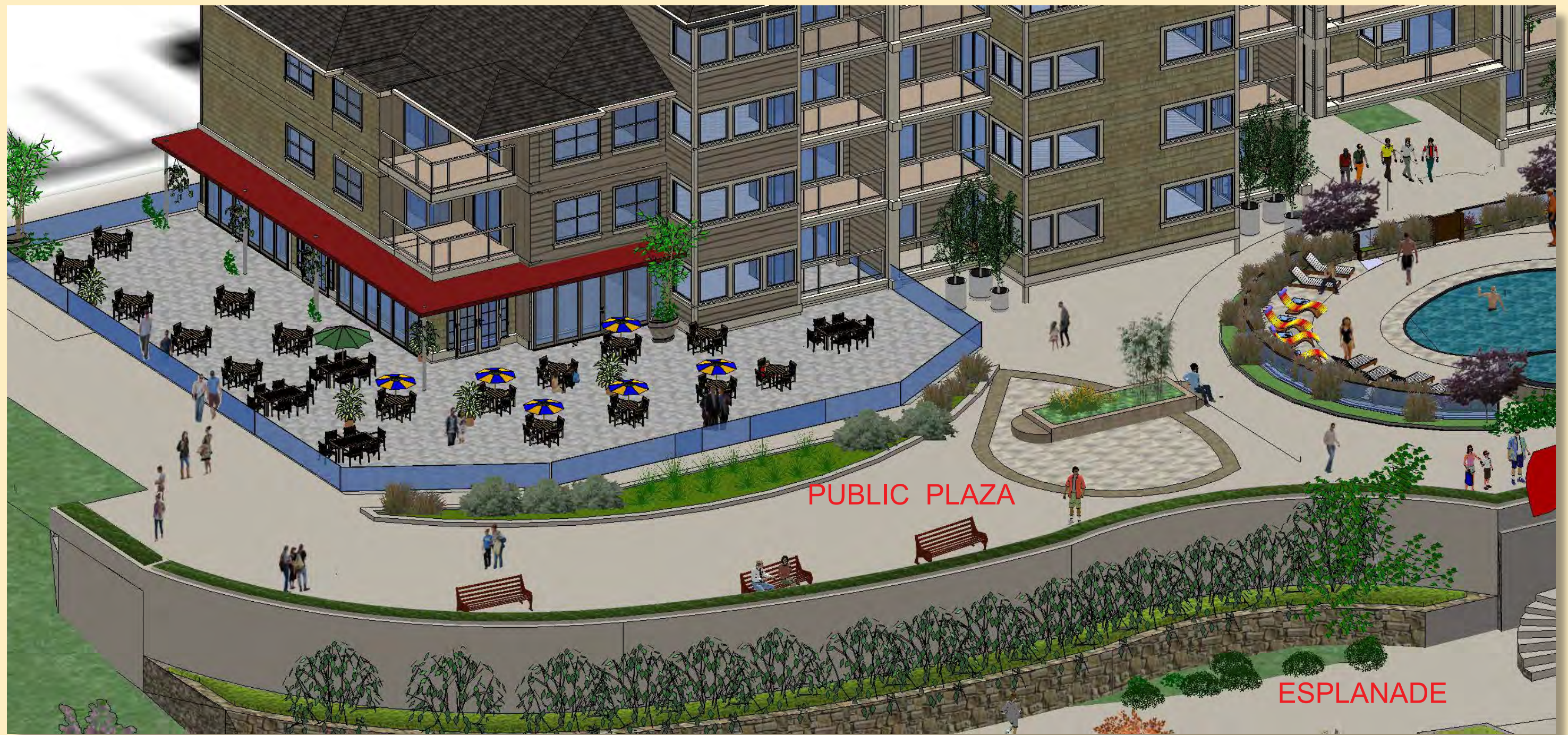




WATERSIDE OF LOT 5 - PLAZA - RESTAURANTS - ESPLANDE

*The Cove*





CLOSE UP - LEFT SIDE OF PLAZA





RESTAURANT ON RIGHT SIDE

*The Cove*



TO ESPLANADE - PLAZA - MARINA - TRAILS

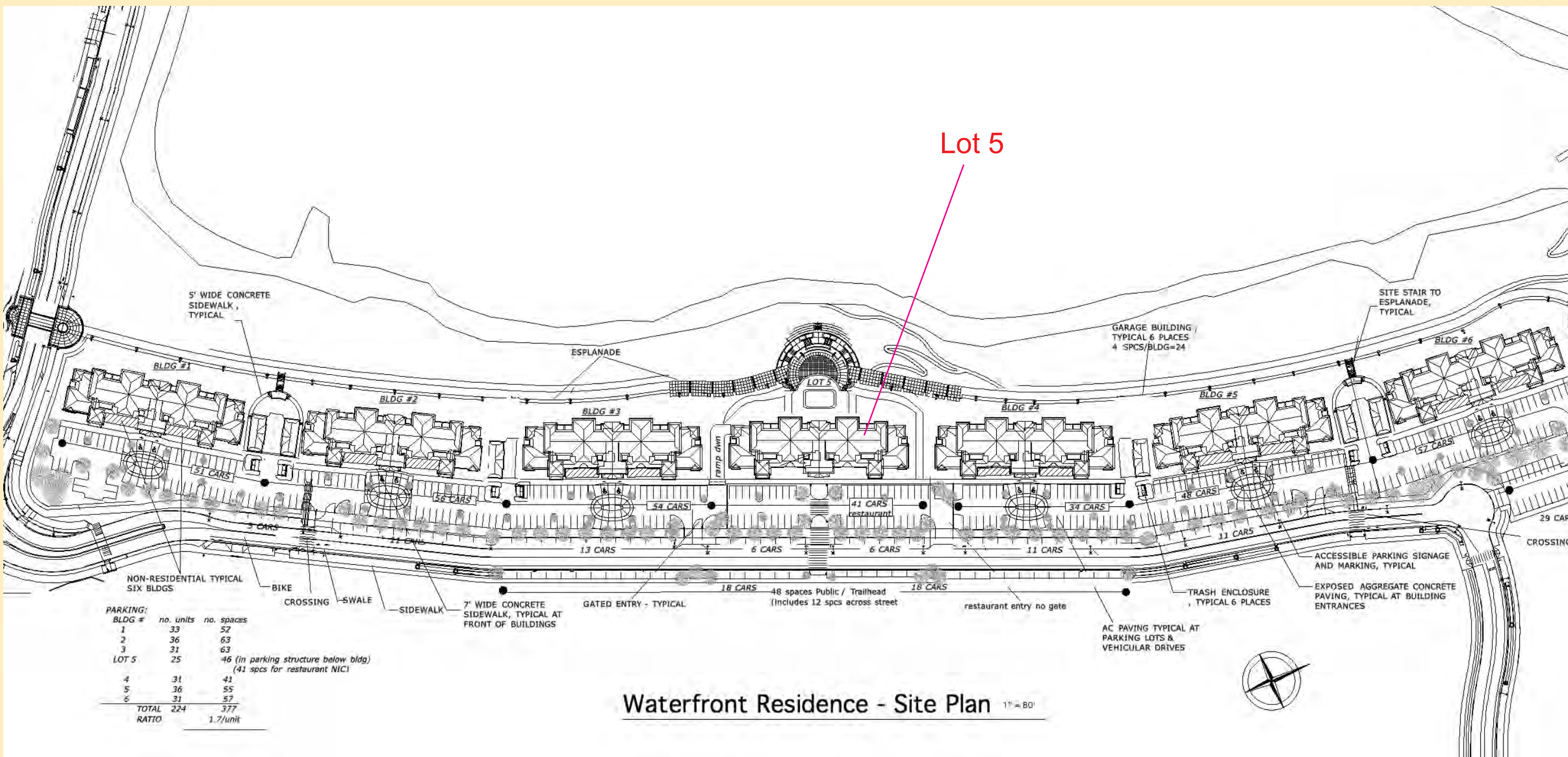


January 17, 2014 3:12:08 AM / Location: P:2011\_30811613 The Cove Waterfront Restaurant / Dining / Layne M. Jones / Layne M. Jones

THE COVE  
WATERFRONT RESIDENCES

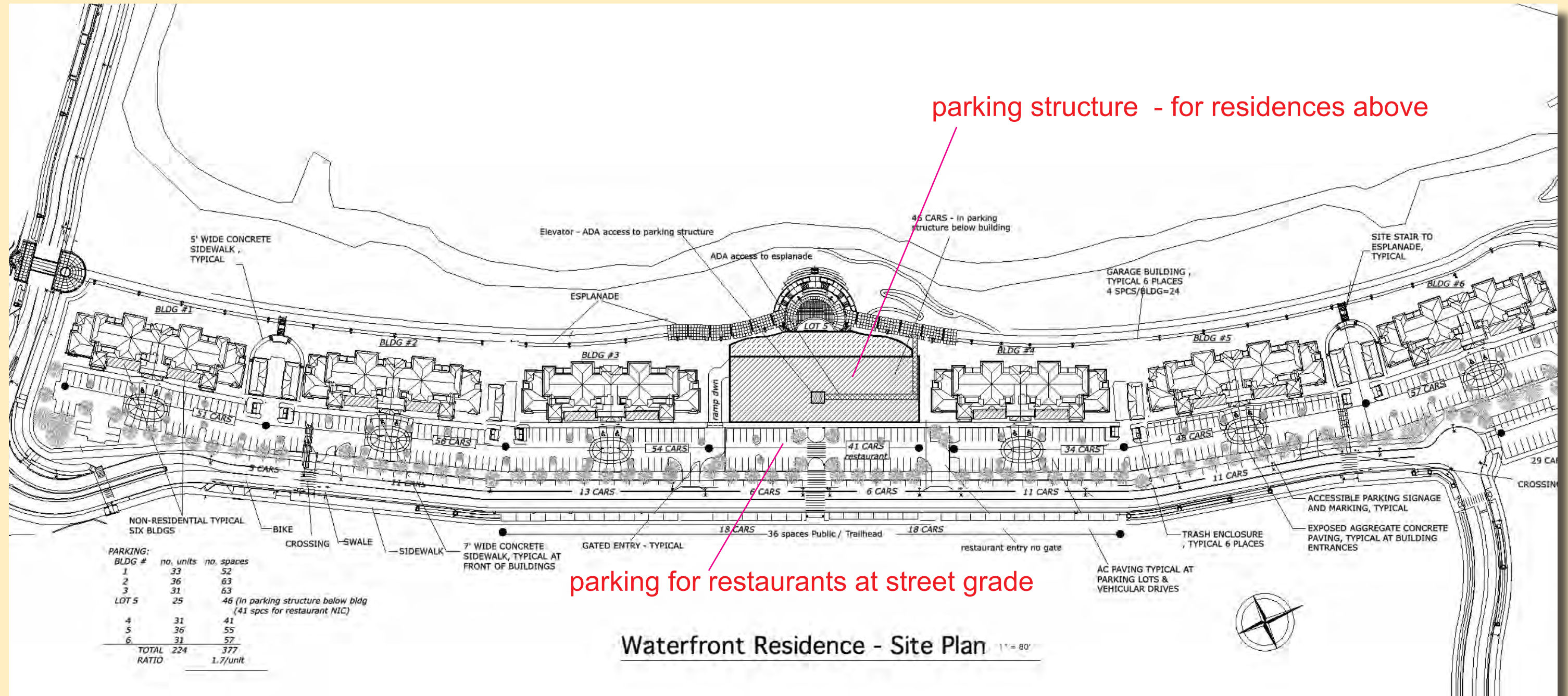
[illegible]

*The Cove*



WATERFRONT SITE PLAN





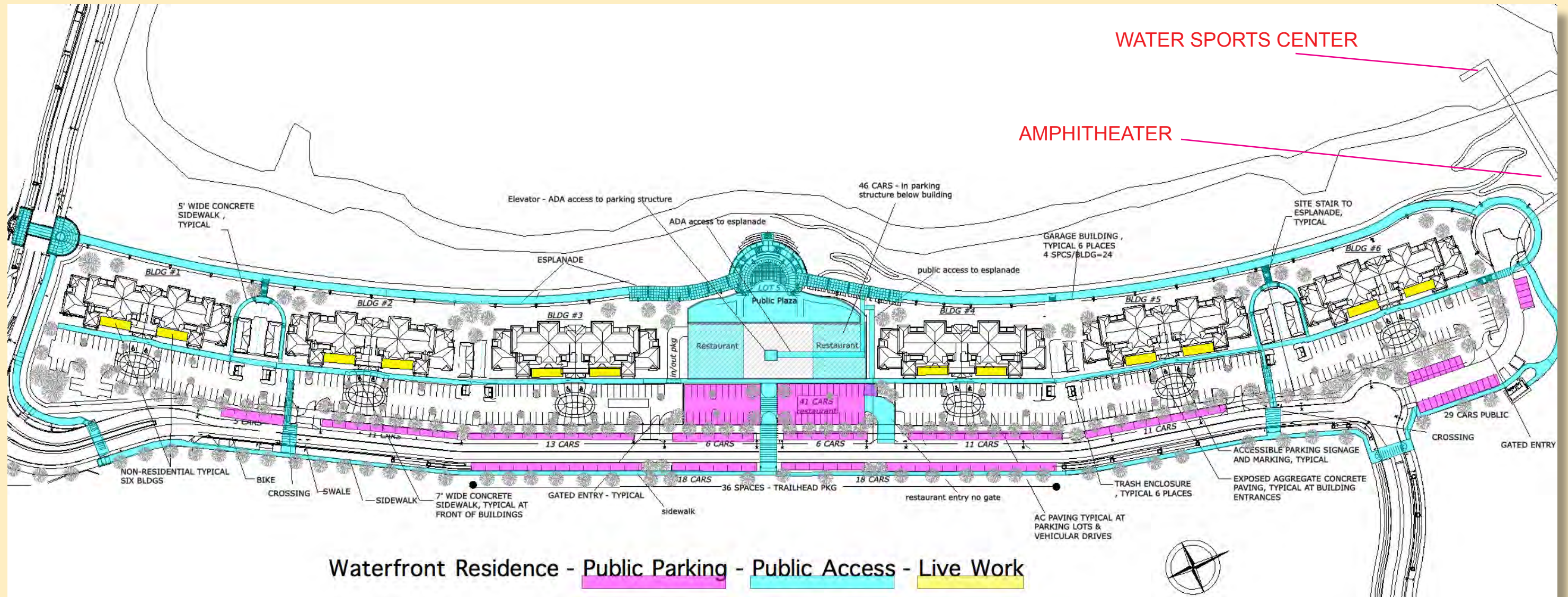
parking structure - for residences above

parking for restaurants at street grade

PARKING LOT 5 - STRUCTURE & AT STREET LEVEL FOR RESTAURANTS

The Cove



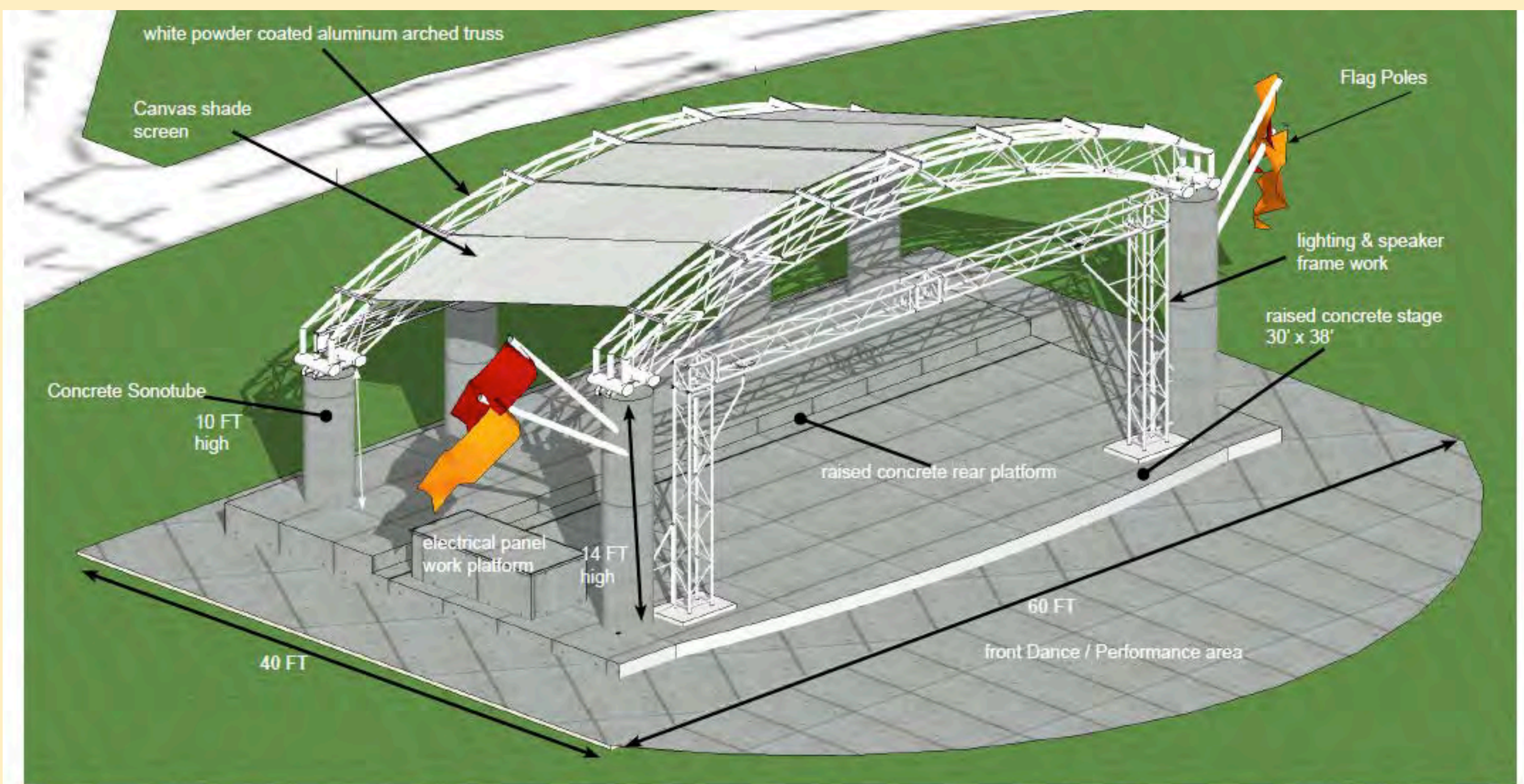


*The Cove* WILL BE A VERY PUBLIC PLACE

PUBLIC PARKING - PUBLIC ACCESS - LIVE WORK OFFICE

*The Cove*





AMPHITHEATER STAGE  
CONCEPT MODEL - front view

NOTE: 1. Speakers and Lighting  
not included.  
2. Final design subject to formal shop  
drawings and final bid.





ESPLANADE TO TRAIL SYSTEM

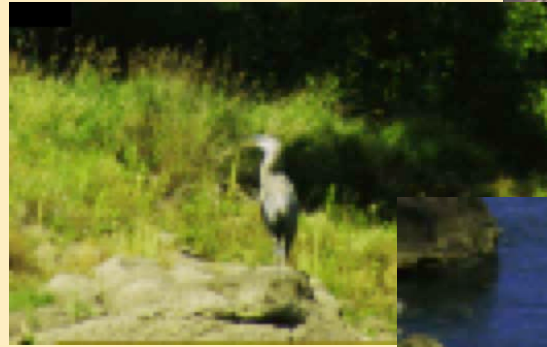
AMPHITHEATER STAGE LOCATON - TRAIL SYSTEM

*The Cove*

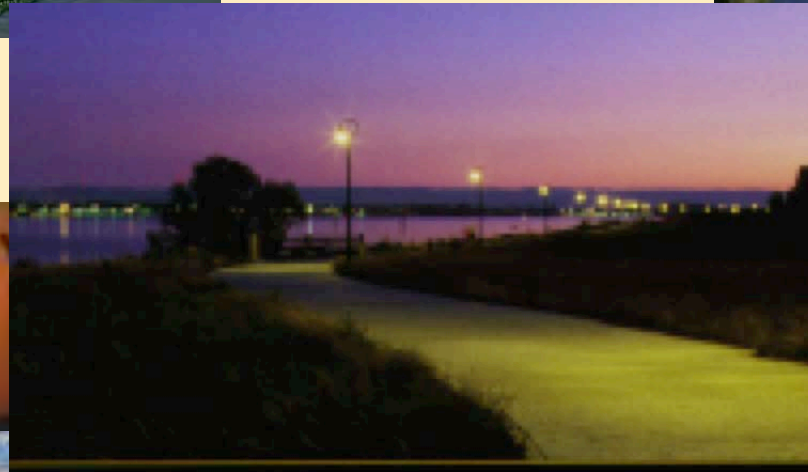




RIPARIAN ENHANCEMENT



ECOSYSTEM PRESERVATION



STEWARDSHIP VALUES



CREATION OF NEW WETLAND HABITAT

*We've Changed The Environment  
We've Made It Better*