

# Natural Resources Overlay District

City of Oregon City

July 8, 2015

Natural Resources Committee

# Title 13- Nature in Neighborhoods



- Metro Title 13 requires jurisdictions to adopt a Habitat conservation map and code that regulates the 850 acres of “significant” Habitat within the current UGB
- “Significant” per Metro means riparian habitat areas along our stream corridors, not upland areas
- Oregon City already regulated these areas of significant habitat in the City Limits under our existing Water Quality Resource Overlay Zone (which covers about 1200 acres).
- Also, Title 13 requires removal of any code or policy barriers that would inhibit habitat friendly development practices (HFDPs)

# Title 13- Nature in Neighborhoods



The new 17.49 code includes:

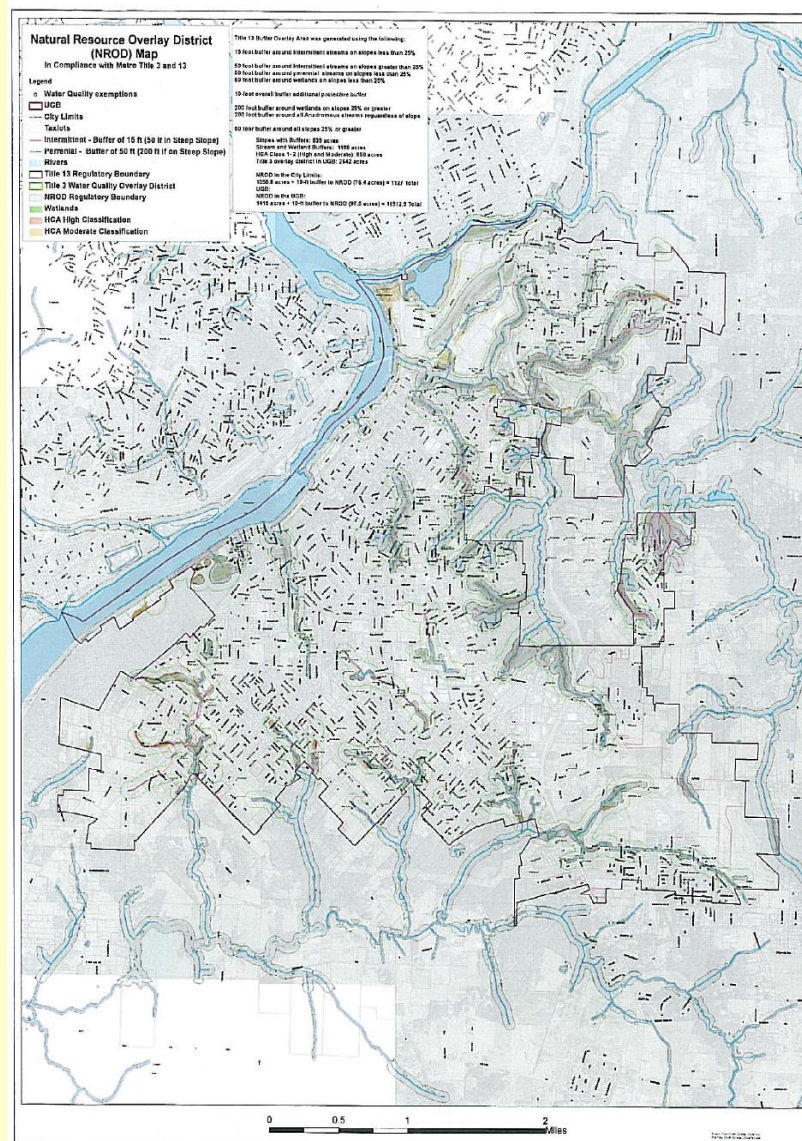
- Use definitions (Prohibited, Exempt, Regulated)
- Development standards for new development
- Standards for Utility lines, Trails, ROWs, and stormwater facilities
- Disturbance area limitations
- Clear & Objective / Discretionary review standards
- Clear & Objective / Discretionary Mitigation standards
- A map verification process.

# Title 13- Nature in Neighborhoods



- Oregon City will substantially comply with Title 13 by:
  - Combine Water Quality Resource Area (WQRA) overlay and the new Habitat map as one contiguous overlay zone protecting 1500 acres in UGB
  - Remove code/policy barriers to HFDPs
  - Implementing a new NROD overlay district Map and Code amendments (Chapter 17.49)
  - More stringent Tree Protection standards outside of NROD
  - Heritage Tree designation process
  - Public Works LID standards
  - Continues to implement our existing Water Quality Resource Area overlay district (Title 3).

# Title 13 Map



Category 2



# Tree Protection Land Development & Heritage Trees



## **Heritage Trees – OCMC 12.08040.**

The list of eligible native trees has been expanded to include several trees from The Oregon City Native Plant list. The list of eligibility is based on a minimum size threshold. Designation requires owner consent.

## **OCMC 16.12 Adjustment to Lot Size and Setbacks to Enable Tree Preservation-**

- Reduction in lot size of up to 50% to allow for tree preservation
- Reduction in setbacks up to 50% to allow for tree preservation.
- Average density of zone must still be met.

## **Category 2**

# Questions ?

