

GLEN OAK PARK MASTER PLAN

WHAT WE HEARD AT THE 2ND PUBLIC MEETING....

Desired Character / Programmatic Elements

- Large Open Lawn areas in Options 1 and 2
- Shelter in a central location, similar to Option 1
- Parking Lot located on Meyers Road
- Restroom locations near the parking lot and near the shelter
- Fenced Off-Leash Dog Area close to the parking area w/ Waste Bag Dispensers and Garbage Cans
- Benches and Picnic Tables scattered throughout the site
- Shaded Play Area, near the shelter and open lawn area
- Basketball Court, Multi-Use Sports Court, Pickleball Courts, Pump Track
- Skate Area, but not close to neighbor houses
- Looped Pathways with a separate loop through the wetland area, similar to Option 2
- Interpretive Signage, Educational Opportunities, Wildlife Viewing Areas
- Benches for viewing the Natural Areas
- Native Planting

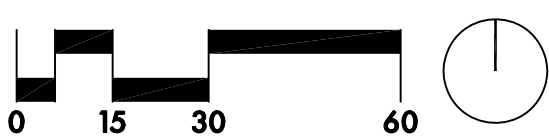
Existing House on Glen Oak

- Interest in pursuing reuse of the existing house for a potential Community Center with Wifi / Educational Opportunities for the High School Students / use by Scouts / Art Gallery, as long as the future Opportunities outweigh the potential constraints.

GLEN OAK PARK MASTER PLAN



REFINED CONCEPT



GLEN OAK PARK MASTER PLAN



Open Lawn



Fenced Dog Park



Pathways for Learning



Skate Spot



Basketball Half-Court



Pump Track



Pickleball

PRECEDENT PHOTOS – ACTIVE PLAY

GLEN OAK PARK MASTER PLAN



Shelter



Walking Paths



Boardwalk



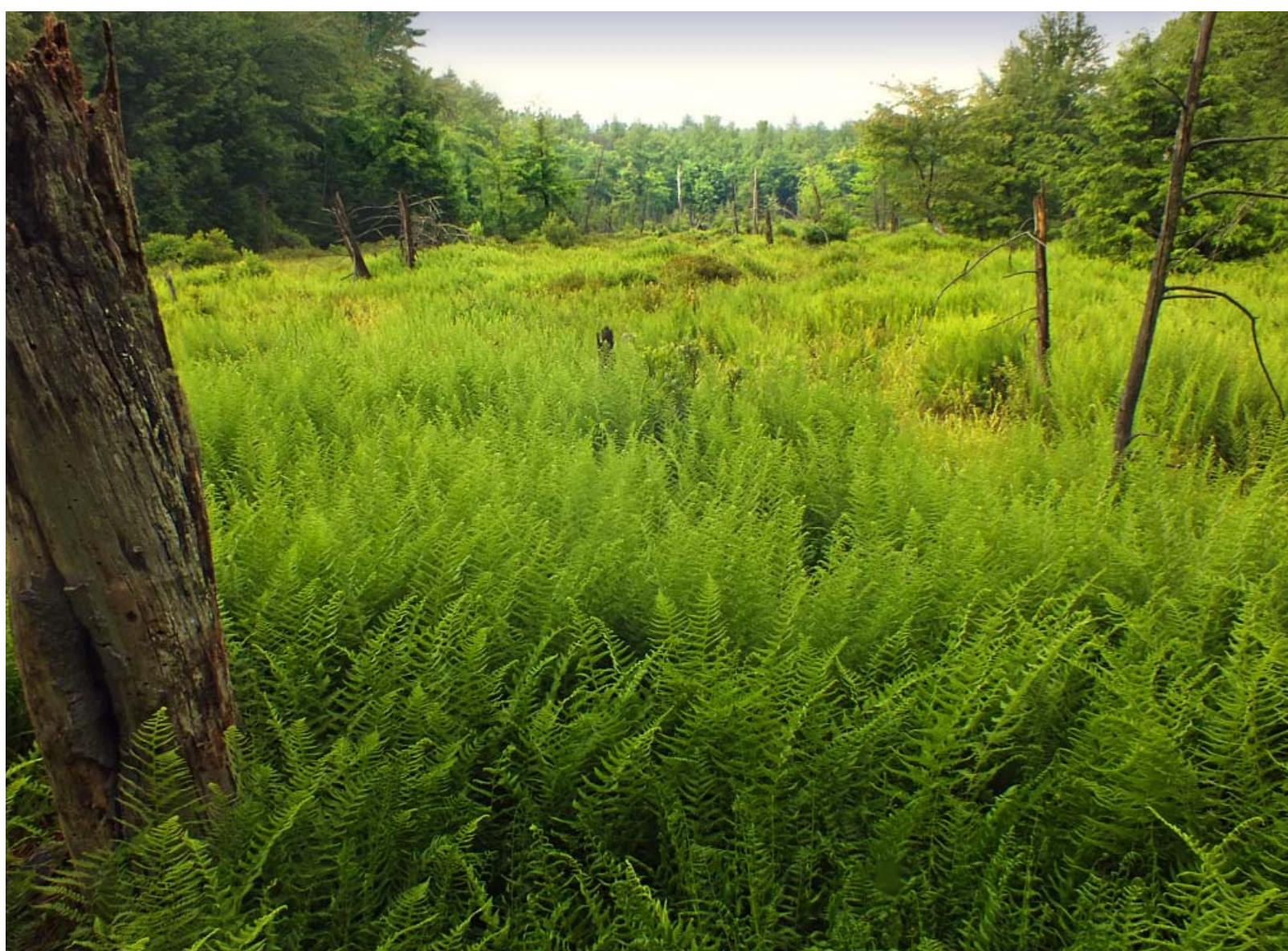
Interpretive Signage



Overlook



Natural Area Planting



Native Wetland Planting



Stormwater Planters

PRECEDENT PHOTOS – SITE FEATURES

GLEN OAK PARK MASTER PLAN



Play Structures



Nature Play



Diverse Structured Play

PRECEDENT PHOTOS – PLAY AREAS