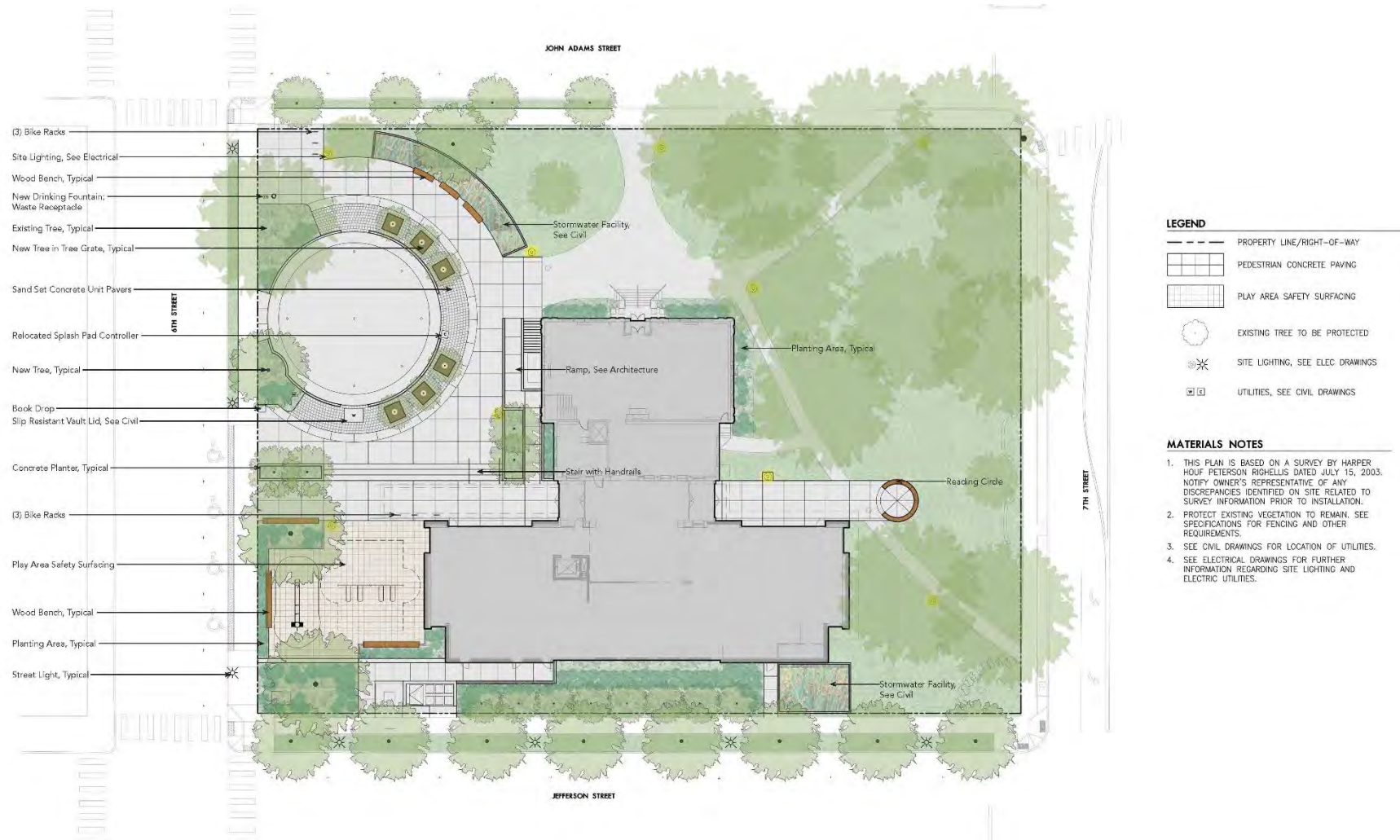


Oregon City Carnegie Library & Addition



The Carnegie with the Addition
100% Design Development Presentation
City Commissioner's 04.01.15

Oregon City Carnegie Library & Addition



Landscape Plan

Oregon City Carnegie Library & Addition



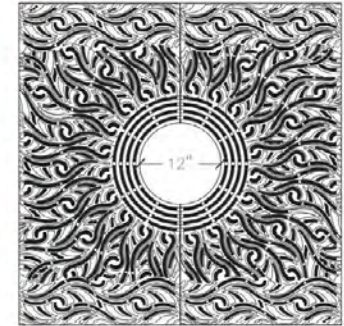
Wood Bench Mounted on Concrete



Ring Bike Rack



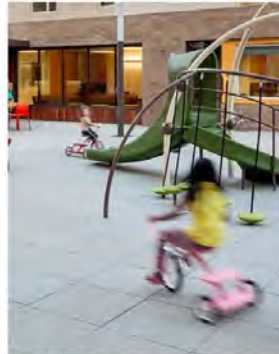
Cast Iron Tree Grate



Play Area Slide



Play Area Swing Set



Rubber Tile Safety Surfacing at Play Area



Drinking Fountain



Waste Receptacle



Sand Set Concrete Unit Paver

Site Furnishings



Ulmus x 'Morton'
Acolada Elm



Zelkova serrata 'Green Vase'
Green Vase Zelkova



Abelia 'Rose Creek'
Rose Creek Abelia



Choisya x dewitteana 'Aztec Pearl'
Aztec Pearl Mock Orange



Rhododendron 'Dreamland'
Dreamland Rhododendron



Rosmarinus officinalis 'Tuscan Blue'
Tuscan Blue Rosemary



Mahonia repens
Creeping Oregon Grape



Rubus calycioides
Creeping Raspberry



Cornus kousa var. chinensis
Chinese Dogwood



Cereis canadensis 'Aoe of Hearts'
Aoe of Hearts Redbud



Pistacia chinensis
Chinese Pistache



Cornus stolonifera 'Flamingo'
Arctic Fire Red Twig Dogwood



Junus patens
Spreading Rush



Carex testacea
New Zealand Orange Sedge

Oregon City Carnegie Library & Addition



Solar & Green Roof

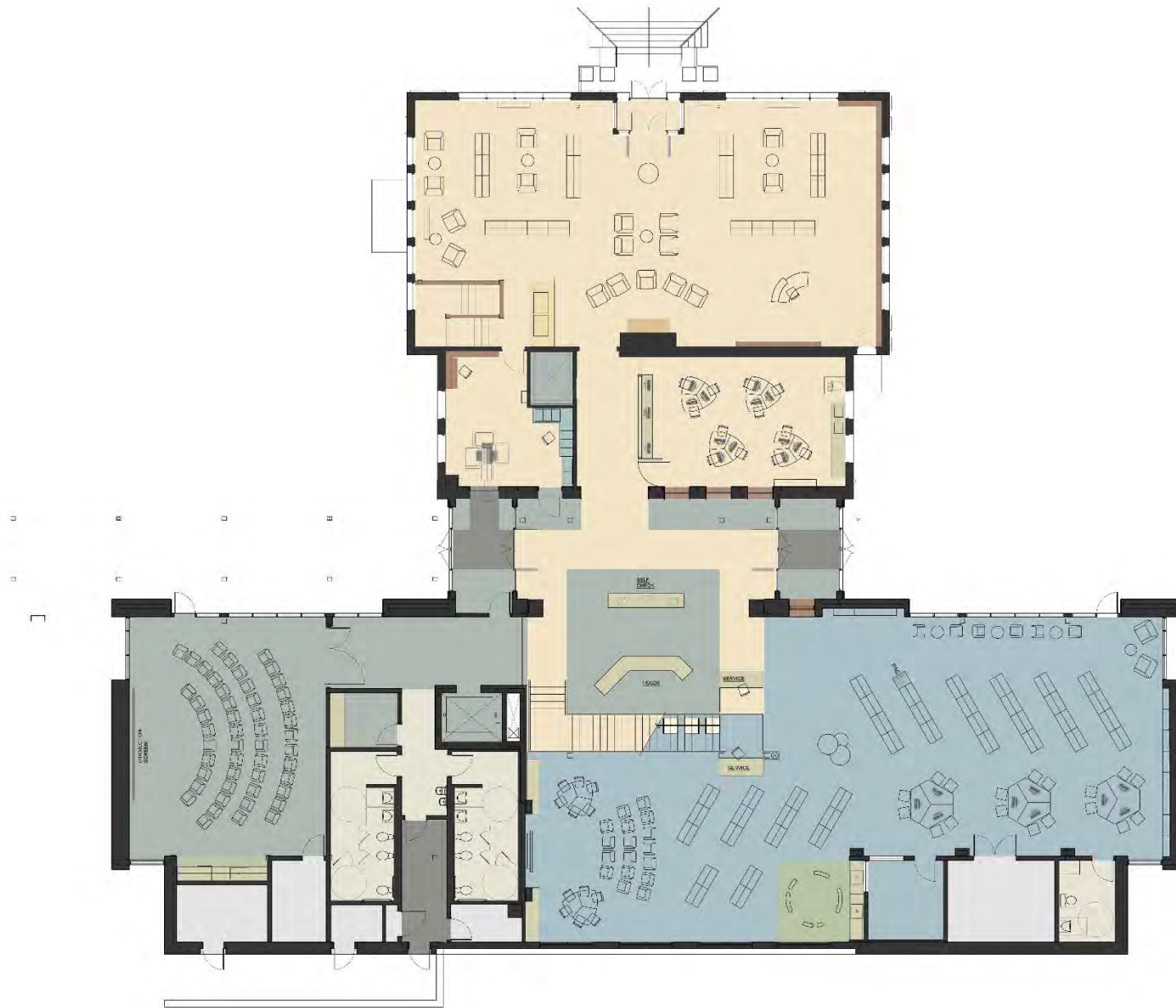
Oregon City Carnegie Library & Addition



Carnegie Interior



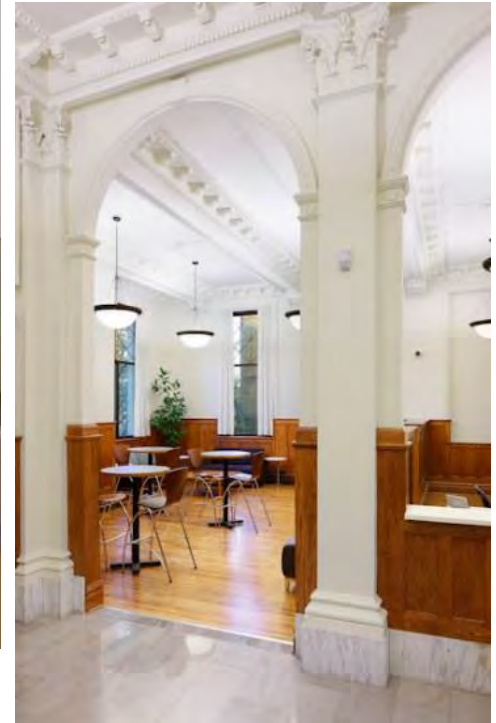
Lower Level Floor Plan



First Level Floor Plan

Second Level Floor Plan

Oregon City Carnegie Library & Addition



Precedent Images

Oregon City Carnegie Library & Addition



Precedent

Oregon City Carnegie Library & Addition



Lighting

Oregon City Carnegie Library & Addition



Lighting

Oregon City Carnegie Library & Addition



Lighting

Oregon City Carnegie Library & Addition



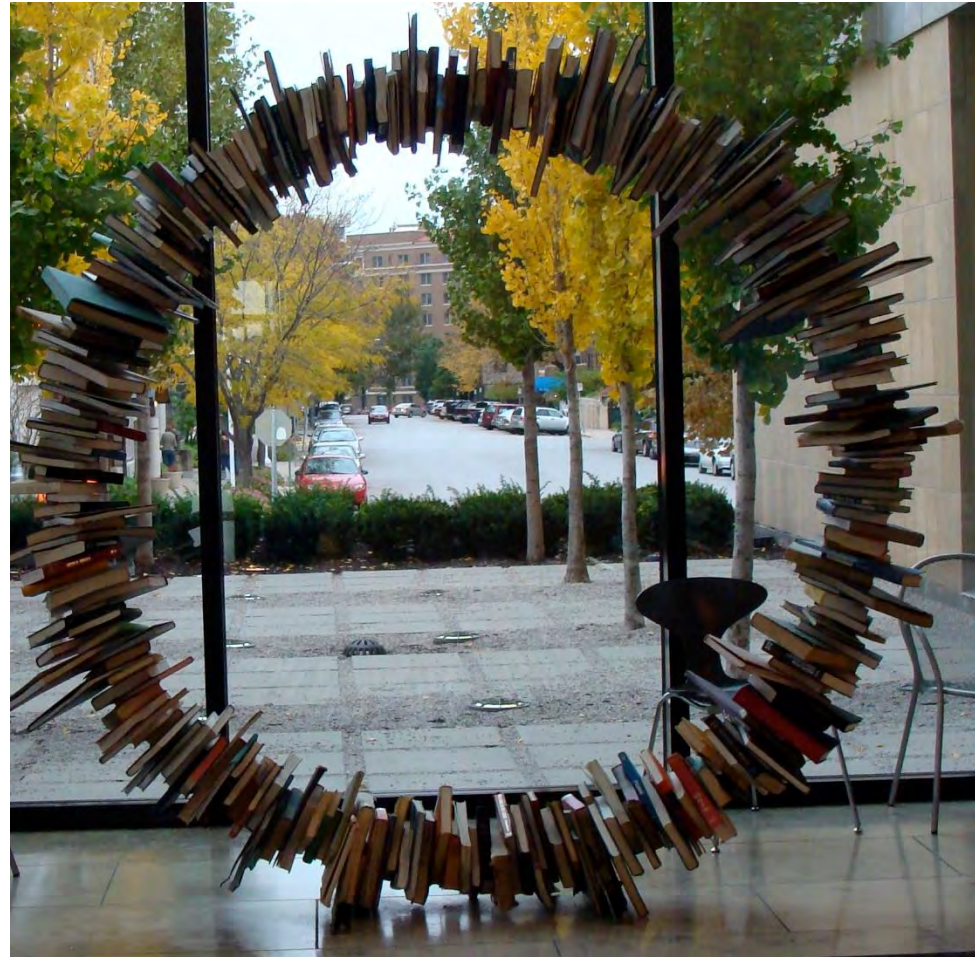
Lighting

Oregon City Carnegie Library & Addition



Interior Tone

Oregon City Carnegie Library & Addition



Art

Remove building ID
Update vinyl at door



Existing Entrance
Scale: NTS

Replace Sign Panel



Sign Type AA
Scale: NTS

LIBRARY

Sign Type BB

Scale: 1/2" = 1'-0"

OREGON CITY
PUBLIC LIBRARY



Sign Type CC

Scale: 1/2" = 1'-0"

HOURS

Monday	10 - 5
Tuesday	10 - 8
Wednesday	10 - 8
Thursday	10 - 8
Friday	10 - 8
Saturday	10 - 6
Sunday	12 - 5

Sign Type K

Scale: 1" = 1'-0"



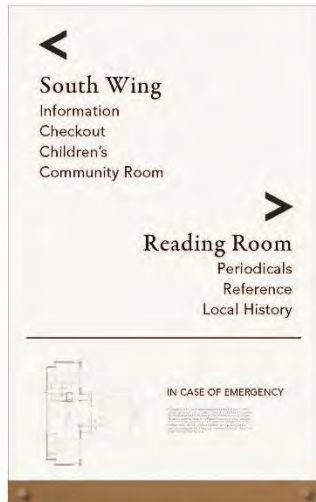
Elevation - West Facade - Building ID

Signage



Children's

Sign Type A - Specialty Area ID
Scale: 1/4" = 1"



Oregon City Carnegie Library & Addition

Select Reference Drawings
100% Design Development Submission
03.25.15

S|E A
SCOTT | EDWARDS ARCHITECTURE LLP
2015 E. Burnside St., Portland, OR 97214
phone (503) 228-3817 www.seallp.com

OREGON CITY
PUBLIC LIBRARY
RENOVATION &
ADDITION
OREGON CITY, OREGON

OREGON CITY, OREGON

DESIGN DEVELOPMENT
DOCUMENTS

Drawing:

COVER SHEET

Job No. _____
Date: _____
Drawn By: _____
Checked By: _____
Sheet No: _____

A0.0

S|E A
SCOTT EDWARDS ARCHITECTURE LLP

Select Reference Drawings – 100% Design Development Submission 03.25.15

OREGON CITY PUBLIC LIBRARY RENOVATION & ADDITION

OREGON CITY, OREGON

Lange, Hansen | J. K. HANSEN ARCHITECTS
1000 N. 10TH AVE. SUITE 1000 SEASIDE, OR 97138

LEGEND

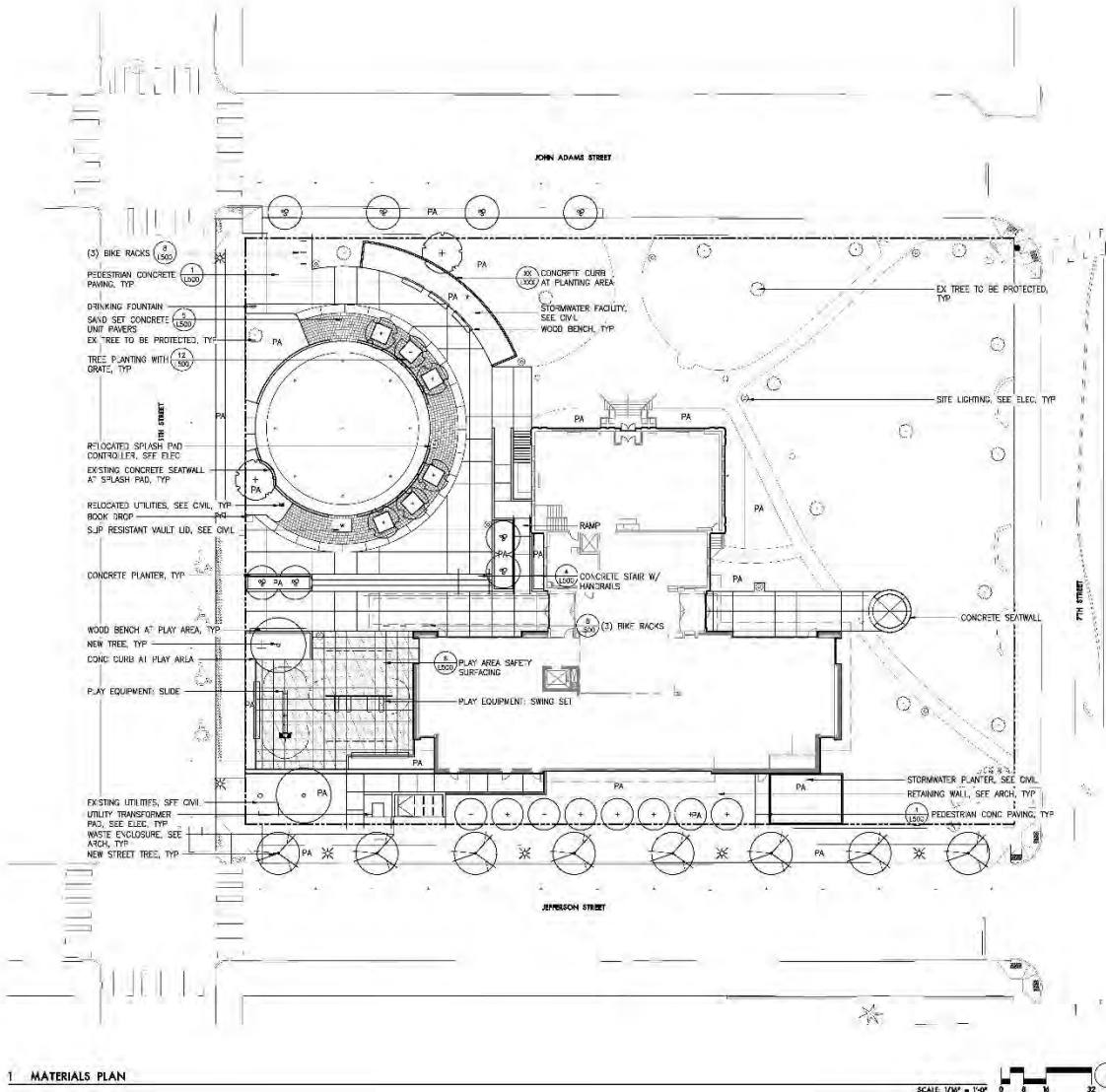
---	PROPERTY LINE/RIGHT-OF-WAY
▨	PEDESTRIAN CONCRETE PAVING
▩	PLAY AREA SAFETY SURFACING
○	EXISTING TREE TO BE PROTECTED
⊗	SITE LIGHTING, SEE ELEC DRAWINGS
⊞	UTILITIES, SEE CIVIL DRAWINGS

ABBREVIATIONS

ARCH	ARCHITECTURAL
CONC	CONCRETE
DMC	DRAWINGS
ELEC	ELECTRICAL
MECH	MECHANICAL
NC	NOT IN CONTRACT
PA	PLANTING AREA
SM	SIMILAR
SPECS	SPECIFICATIONS
SS	STAINLESS STEEL
STRUC	STRUCTURAL
TYP	TYPICAL
W/	WITH

MATERIALS NOTES

1. THIS PLAN IS BASED ON A SURVEY BY HARPER ROOF PETERSON RIGHELLI DATED JULY 15, 2003. NOTIFY OWNER'S REPRESENTATIVE OF ANY DISCREPANCIES DISCLOSED ON SITE RELATED TO SURVEY INFORMATION PRIOR TO INSTALLATION.
2. PROTECT EXISTING VEGETATION TO REMAIN. SEE SPECIFICATIONS FOR FENCING AND OTHER REQUIREMENTS.
3. SEE CIVIL DRAWINGS FOR LOCATION OF UTILITIES.
4. SEE ELECTRICAL DRAWINGS FOR FURTHER INFORMATION REGARDING SITE LIGHTING AND ELECTRIC UTILITIES.



1 MATERIALS PLAN

DESIGN DEVELOPMENT
DOCUMENTS

Drawing

MATERIALS PLAN

JOB NO: 1415
Date: MARCH 28, 2015
Drawn By: EK
Checked By: KL
Sheet No:

L2.00

OREGON CITY
PUBLIC LIBRARY
RENOVATION &
ADDITION

OREGON CITY, OREGON

Lange, Hansen | LANDSCAPE ARCHITECTS
1000 N. BROADWAY, SUITE 200, PORTLAND, OREGON 97227

PLANT SCHEDULE

SYMBOL	BOTANICAL NAME	COMMON NAME	SIZE/CONDITION	SPACING
TREES				
	<i>Acer canadense</i> 'Acer of Hearts'	Acer of Hearts Redbud	3" CAL./B&B	AS SHOWN
	<i>Cornus kousa</i> var. <i>chinensis</i>	Chinese Dogwood	3" CAL./B&B	AS SHOWN
	<i>Pistacia chinensis</i>	Chinese Pistache	3" CAL./B&B	AS SHOWN
	<i>Ulmus x 'Morton'</i>	Accolade Lim	5" CAL./B&B	AS SHOWN
	<i>Zelkova serrata</i> 'Green Vase'	Green Vase Zelkova	4" CAL./B&B	AS SHOWN
	<i>Zelkova serrata</i> 'Schnittstiel'	Wireless Zelkova	4" CAL./B&B	AS SHOWN
SHRUBS, GRASSES AND GROUNDCOVERS				
	<i>Abelia x 'Rose Creek'</i>	Rose Creek Abelia	#5/CONT.	30" O.C.
	<i>Monarda ripens</i>	Creeping Monarda	#2/CONT.	18" O.C.
	<i>Polystichum munilum</i>	Western Sword Fern	#5/CONT.	30" O.C.
	<i>Arctostaphylos 'Arizona'</i>	Arctostaphylos	#5/CONT.	30" O.C.
	<i>Rhoenodendron x 'Decumbent'</i>	Decumbent Rhoenodendron	#5/CONT.	AS SHOWN
	<i>Rosmarinus officinalis 'Tuscan Blue'</i>	Tuscan Blue Rosemary	#5/CONT.	30" O.C.
	<i>Rubus coccineus</i>	Creeping Raspberry	#1/CONT.	12" O.C.
STONMATERIAL PLANTER				
	<i>Carex lasiocarpa</i>	New Zealand Orange Sedge	#1/CONT.	12" O.C.
	<i>Cornus stolonifera 'Farrow'</i>	Arctic Fox Red Twig Dogwood	#5/CONT.	24" O.C.
	<i>Juncus patens</i>	Spreading Rush	#1/CONT.	12" O.C.
SEEDED LAWN				
	Spencer's Northwest Supreme Lawn Mix	Seeded Lawn	SEED	6 lbs/1000 SF

LEGEND

	PROPERTY LINE/RIGHT-OF-WAY
	ROOT BARRIER
	PEDESTRIAN CONCRETE PAVING
	PLAY AREA SAFETY SURFACING
	EXISTING TREE TO BE PROTECTED
	SITE LIGHTING, SEE CIVIL, ELEC. DRAWINGS
	UTILITIES, SEE CIVIL, ELEC. DRAWINGS

ABBREVIATIONS

ARCH	ARCHITECTURE
B&B	BALLED & BUPLAPPED
CONT.	CONTAINER
ELEC	ELECTRICAL
EX	EXISTING
HT	HEIGHT
TYP	TYPICAL
QTY	QUANTITY
W/	WITH
#	CONTAINER SIZE

PLANTING NOTES

- THIS PLAN IS BASED ON A SURVEY BY HARPER HOLF PETERSON RICHLEYS DATED JULY 15, 2003. NOTIFY OWNER'S REPRESENTATIVE OF ANY DISCREPANCIES IDENTIFIED ON SITE RELATED TO SURVEY INFORMATION PRIOR TO INSTALLATION.
- PROTECT EXISTING VEGETATION TO REMAIN. SEE SPECIFICATIONS FOR FENCING AND OTHER REQUIREMENTS.
- ALL PLANT MATERIAL SHALL BE NURSERY GROWN, WELL ROOTED, AND WELL BRANCHED. ALL TREES MUST BE FREE OF INSECT, DISEASE, MECHANICAL INJURY, AND OTHER UNDESIRABLE FEATURES WHICH PLANTED. ALL PLANT MATERIAL SHALL CONFORM TO "AMERICAN STOCK STANDARDS" LATEST EDITION.
- CLEAR PLANT BEDS OF ALL GRVEL AND DEBRIS PRIOR TO SOIL PREPARATION AND PLANTING, FOR APPROVAL BY LANDSCAPE ARCHITECT.
- REPAIR AND RE-SEED ALL AREAS DISTURBED BY CONSTRUCTION.
- FOR GROUNDCOVER PLANTING, SEE DETAIL 9/L3.02.
- ALL PLANTING AREAS ARE TO BE IRRIGATED WITH A PERMANENT AUTOMATIC IRRIGATION SYSTEM EXCEPT RESEEDING DISTURBED AREAS, THOSE ARE TO BE NON-IRRIGATED.

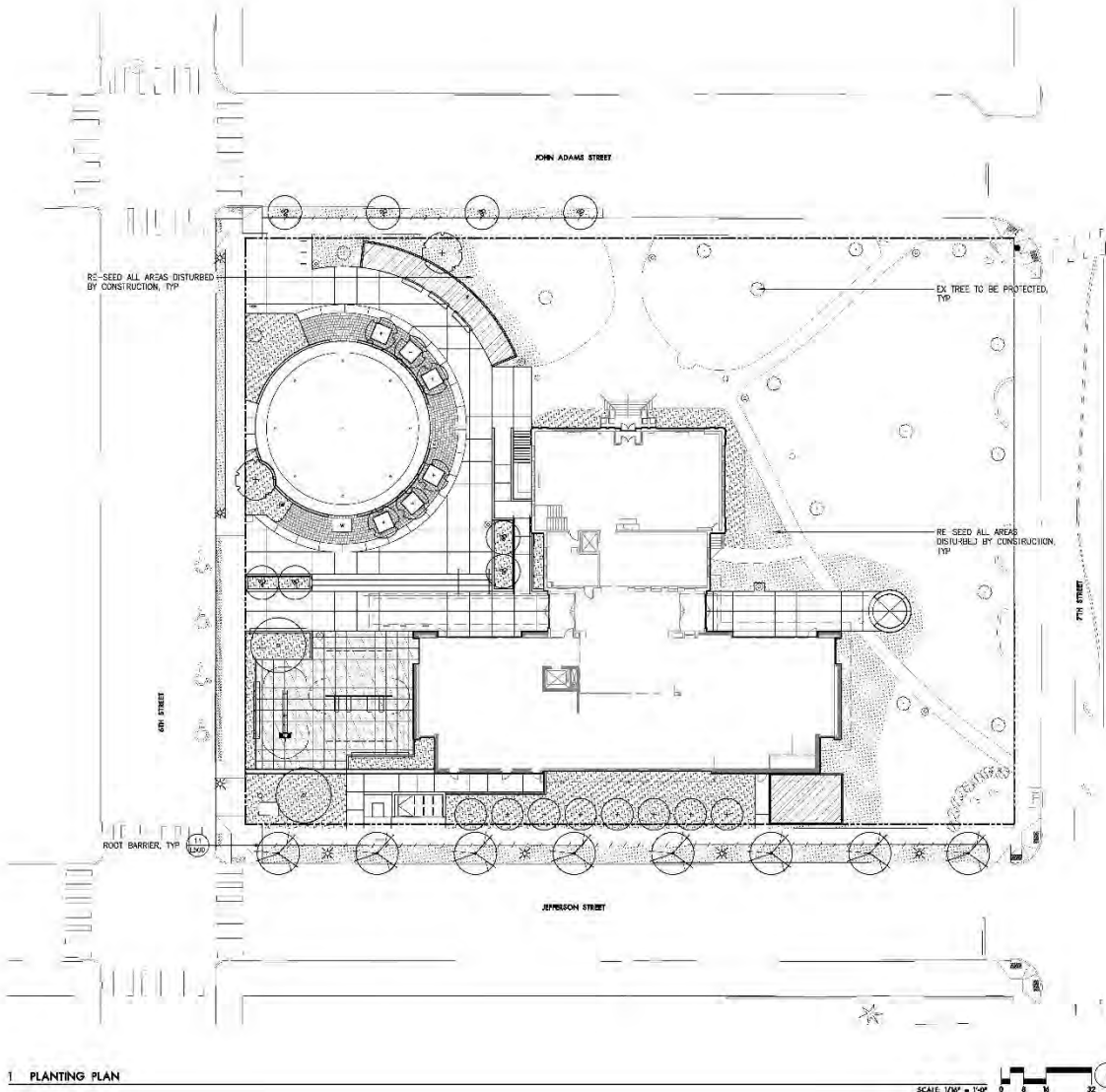
DESIGN DEVELOPMENT
DOCUMENTS

Drawing

PLANTING PLAN

JOB NO. 1415
Date: MARCH 28, 2015
Drawn By: BK
Checked By: KL
Sheet No.

L4.00



1 PLANTING PLAN

GENERAL NOTES

1. SEE OREGON CITY LIBRARY VOLUME 2000-10-2000
2. SEE OREGON CITY LIBRARY VOLUME 2000-10-2000
3. SEE OREGON CITY LIBRARY VOLUME 2000-10-2000
4. SEE OREGON CITY LIBRARY VOLUME 2000-10-2000
5. SEE OREGON CITY LIBRARY VOLUME 2000-10-2000
6. SEE OREGON CITY LIBRARY VOLUME 2000-10-2000
7. SEE OREGON CITY LIBRARY VOLUME 2000-10-2000
8. SEE OREGON CITY LIBRARY VOLUME 2000-10-2000
9. SEE OREGON CITY LIBRARY VOLUME 2000-10-2000
10. SEE OREGON CITY LIBRARY VOLUME 2000-10-2000
11. SEE OREGON CITY LIBRARY VOLUME 2000-10-2000
12. SEE OREGON CITY LIBRARY VOLUME 2000-10-2000
13. SEE OREGON CITY LIBRARY VOLUME 2000-10-2000
14. SEE OREGON CITY LIBRARY VOLUME 2000-10-2000
15. SEE OREGON CITY LIBRARY VOLUME 2000-10-2000
16. SEE OREGON CITY LIBRARY VOLUME 2000-10-2000
17. SEE OREGON CITY LIBRARY VOLUME 2000-10-2000
18. SEE OREGON CITY LIBRARY VOLUME 2000-10-2000
19. SEE OREGON CITY LIBRARY VOLUME 2000-10-2000
20. SEE OREGON CITY LIBRARY VOLUME 2000-10-2000
21. SEE OREGON CITY LIBRARY VOLUME 2000-10-2000
22. SEE OREGON CITY LIBRARY VOLUME 2000-10-2000
23. SEE OREGON CITY LIBRARY VOLUME 2000-10-2000
24. SEE OREGON CITY LIBRARY VOLUME 2000-10-2000
25. SEE OREGON CITY LIBRARY VOLUME 2000-10-2000
26. SEE OREGON CITY LIBRARY VOLUME 2000-10-2000
27. SEE OREGON CITY LIBRARY VOLUME 2000-10-2000
28. SEE OREGON CITY LIBRARY VOLUME 2000-10-2000
29. SEE OREGON CITY LIBRARY VOLUME 2000-10-2000
30. SEE OREGON CITY LIBRARY VOLUME 2000-10-2000
31. SEE OREGON CITY LIBRARY VOLUME 2000-10-2000
32. SEE OREGON CITY LIBRARY VOLUME 2000-10-2000
33. SEE OREGON CITY LIBRARY VOLUME 2000-10-2000
34. SEE OREGON CITY LIBRARY VOLUME 2000-10-2000
35. SEE OREGON CITY LIBRARY VOLUME 2000-10-2000
36. SEE OREGON CITY LIBRARY VOLUME 2000-10-2000
37. SEE OREGON CITY LIBRARY VOLUME 2000-10-2000
38. SEE OREGON CITY LIBRARY VOLUME 2000-10-2000
39. SEE OREGON CITY LIBRARY VOLUME 2000-10-2000
40. SEE OREGON CITY LIBRARY VOLUME 2000-10-2000
41. SEE OREGON CITY LIBRARY VOLUME 2000-10-2000
42. SEE OREGON CITY LIBRARY VOLUME 2000-10-2000
43. SEE OREGON CITY LIBRARY VOLUME 2000-10-2000
44. SEE OREGON CITY LIBRARY VOLUME 2000-10-2000
45. SEE OREGON CITY LIBRARY VOLUME 2000-10-2000
46. SEE OREGON CITY LIBRARY VOLUME 2000-10-2000
47. SEE OREGON CITY LIBRARY VOLUME 2000-10-2000
48. SEE OREGON CITY LIBRARY VOLUME 2000-10-2000
49. SEE OREGON CITY LIBRARY VOLUME 2000-10-2000
50. SEE OREGON CITY LIBRARY VOLUME 2000-10-2000
51. SEE OREGON CITY LIBRARY VOLUME 2000-10-2000
52. SEE OREGON CITY LIBRARY VOLUME 2000-10-2000
53. SEE OREGON CITY LIBRARY VOLUME 2000-10-2000
54. SEE OREGON CITY LIBRARY VOLUME 2000-10-2000
55. SEE OREGON CITY LIBRARY VOLUME 2000-10-2000
56. SEE OREGON CITY LIBRARY VOLUME 2000-10-2000
57. SEE OREGON CITY LIBRARY VOLUME 2000-10-2000
58. SEE OREGON CITY LIBRARY VOLUME 2000-10-2000
59. SEE OREGON CITY LIBRARY VOLUME 2000-10-2000
60. SEE OREGON CITY LIBRARY VOLUME 2000-10-2000
61. SEE OREGON CITY LIBRARY VOLUME 2000-10-2000
62. SEE OREGON CITY LIBRARY VOLUME 2000-10-2000
63. SEE OREGON CITY LIBRARY VOLUME 2000-10-2000
64. SEE OREGON CITY LIBRARY VOLUME 2000-10-2000
65. SEE OREGON CITY LIBRARY VOLUME 2000-10-2000
66. SEE OREGON CITY LIBRARY VOLUME 2000-10-2000
67. SEE OREGON CITY LIBRARY VOLUME 2000-10-2000
68. SEE OREGON CITY LIBRARY VOLUME 2000-10-2000
69. SEE OREGON CITY LIBRARY VOLUME 2000-10-2000
70. SEE OREGON CITY LIBRARY VOLUME 2000-10-2000
71. SEE OREGON CITY LIBRARY VOLUME 2000-10-2000
72. SEE OREGON CITY LIBRARY VOLUME 2000-10-2000
73. SEE OREGON CITY LIBRARY VOLUME 2000-10-2000
74. SEE OREGON CITY LIBRARY VOLUME 2000-10-2000
75. SEE OREGON CITY LIBRARY VOLUME 2000-10-2000
76. SEE OREGON CITY LIBRARY VOLUME 2000-10-2000
77. SEE OREGON CITY LIBRARY VOLUME 2000-10-2000
78. SEE OREGON CITY LIBRARY VOLUME 2000-10-2000
79. SEE OREGON CITY LIBRARY VOLUME 2000-10-2000
80. SEE OREGON CITY LIBRARY VOLUME 2000-10-2000
81. SEE OREGON CITY LIBRARY VOLUME 2000-10-2000
82. SEE OREGON CITY LIBRARY VOLUME 2000-10-2000
83. SEE OREGON CITY LIBRARY VOLUME 2000-10-2000
84. SEE OREGON CITY LIBRARY VOLUME 2000-10-2000
85. SEE OREGON CITY LIBRARY VOLUME 2000-10-2000
86. SEE OREGON CITY LIBRARY VOLUME 2000-10-2000
87. SEE OREGON CITY LIBRARY VOLUME 2000-10-2000
88. SEE OREGON CITY LIBRARY VOLUME 2000-10-2000
89. SEE OREGON CITY LIBRARY VOLUME 2000-10-2000
90. SEE OREGON CITY LIBRARY VOLUME 2000-10-2000
91. SEE OREGON CITY LIBRARY VOLUME 2000-10-2000
92. SEE OREGON CITY LIBRARY VOLUME 2000-10-2000
93. SEE OREGON CITY LIBRARY VOLUME 2000-10-2000
94. SEE OREGON CITY LIBRARY VOLUME 2000-10-2000
95. SEE OREGON CITY LIBRARY VOLUME 2000-10-2000
96. SEE OREGON CITY LIBRARY VOLUME 2000-10-2000
97. SEE OREGON CITY LIBRARY VOLUME 2000-10-2000
98. SEE OREGON CITY LIBRARY VOLUME 2000-10-2000
99. SEE OREGON CITY LIBRARY VOLUME 2000-10-2000
100. SEE OREGON CITY LIBRARY VOLUME 2000-10-2000

KEYNOTES

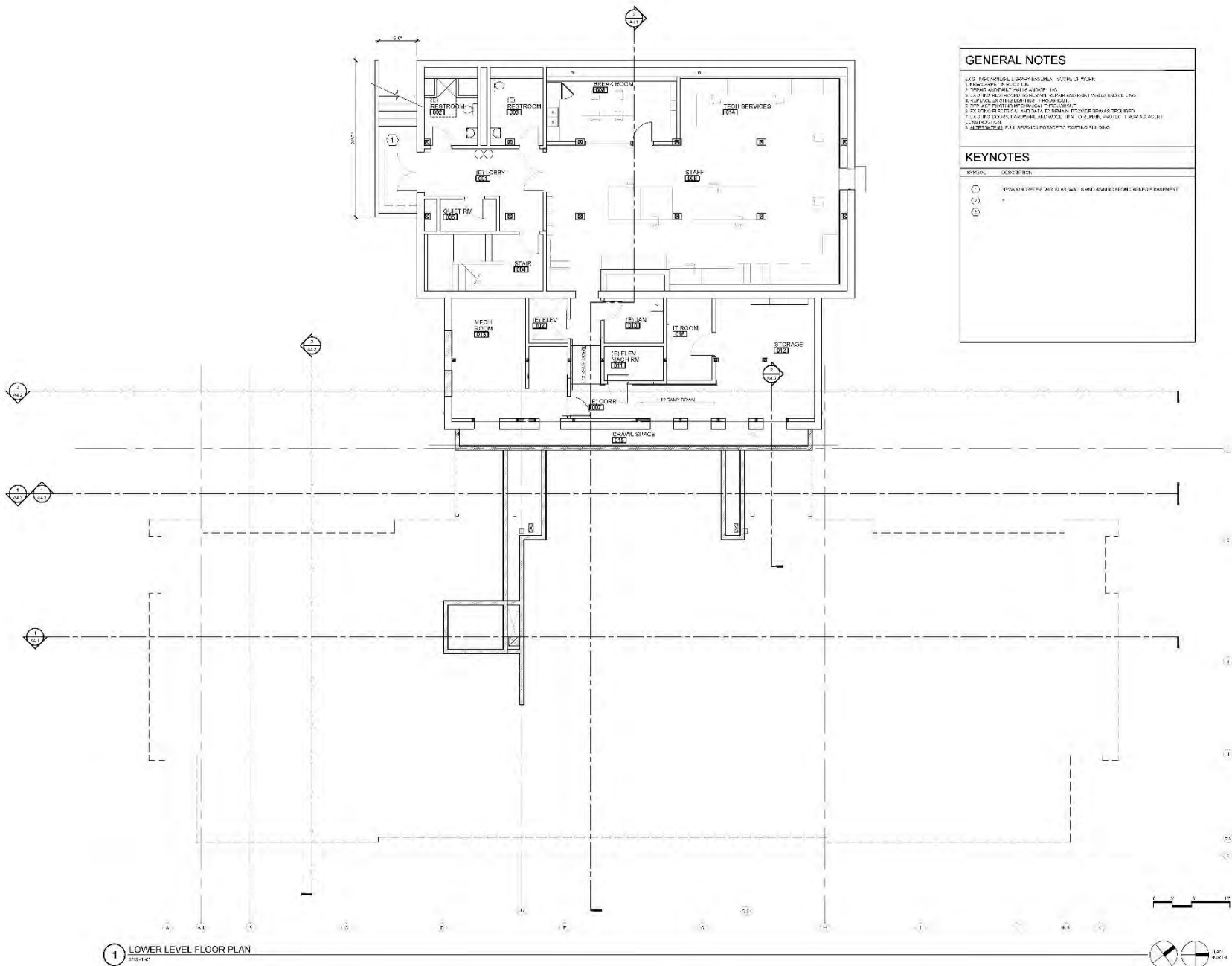
- | SYMBOL | DESCRIPTION |
|--------|-----------------------------------|
| ○ | SPACED STITCHES AT 1/4" ON CENTER |
| ○ | SPACED STITCHES AT 1/4" ON CENTER |
| ○ | SPACED STITCHES AT 1/4" ON CENTER |

DESIGN DEVELOPMENT
DOCUMENTS

Drawing
LOWER LEVEL PLAN

Job No. 1410
Date: MARCH 26, 2015
Drawn By:
Checked By:
Sheet No.

A2.0

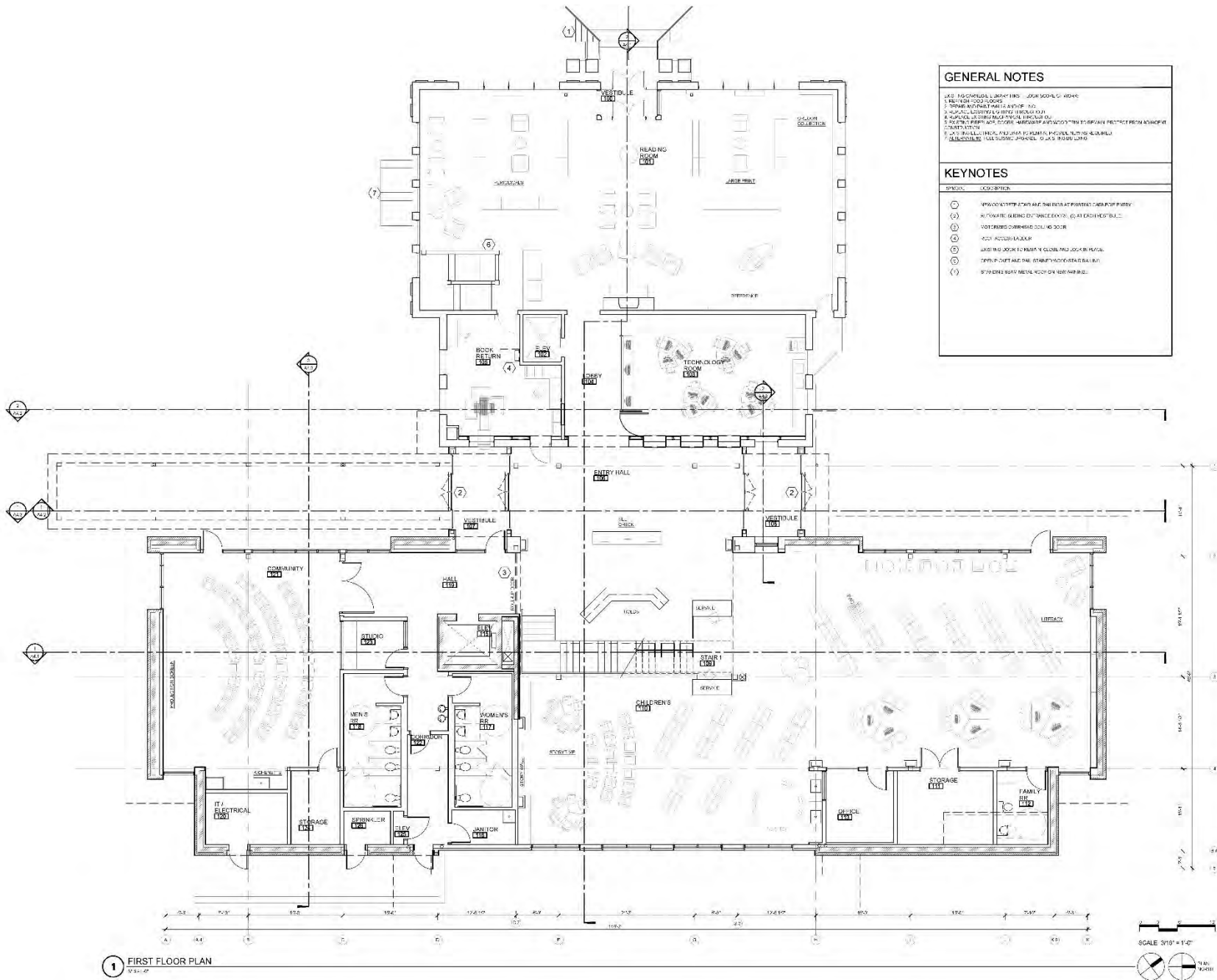


[illegible]

SPECIES	CO22-0310N
(1)	NEWWOOD SYSTEM STAIRS AND RAILINGS AT PRINTERS CAFE/POFF ENTRY
(2)	RELOCATE GUIDING DISTANCE CONTROL (G) AT EACH RESTROOM
(3)	NOTICED OVERHEAD DOORING DOOR
(4)	KEY ACCESS LABELER
(5)	BRASSING LOCK TO REMAIN Y CLOSING LOCK IN PLURAL
(6)	OPENING DOOR AND RAIL (STAIRWAY/STAIRS RAILING)
(7)	STAIRS BRASS METAL RAIL ON NEW WALKING

OREGON CITY, OREGON

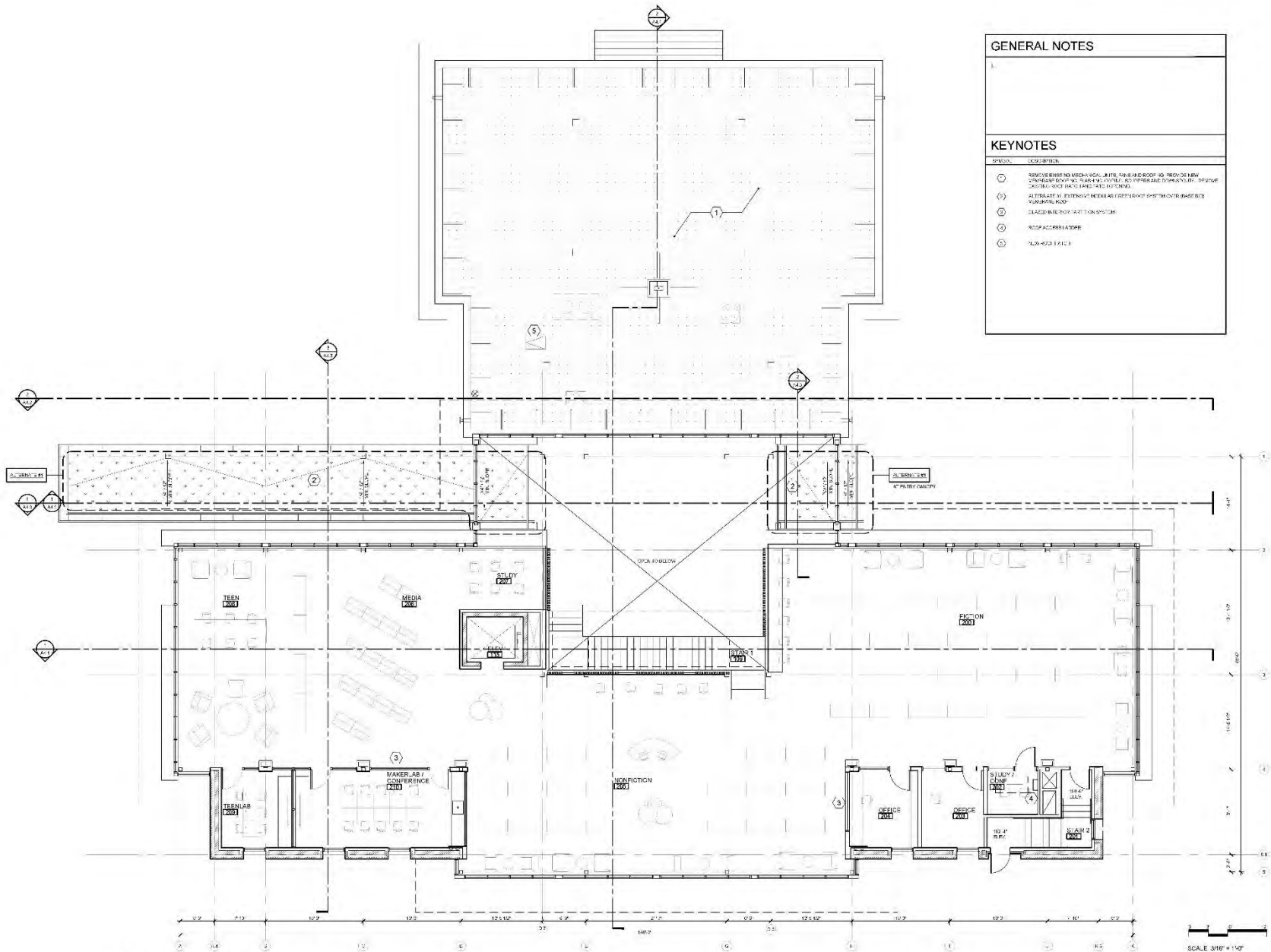
Job No.	1415
Date	MARCH 25, 2015
Drawn By:	-
Checked By:	-
Sheet No.	



GENERAL NOTES

KEYNOTES

SYMBOL	DESCRIPTION
①	REMOVE EXISTING ARCH-VISUAL, INTERIOR FLOORING, AND PROVIDE NEW STAINLESS STEEL PLATING IN CORNERS, EDGES AND TRANSITIONS. REMOVE CARPETING AND FLOOR LAMINATE OUTLINE.
②	ALTERNATE: AT EXTENSIVE MODERNIZATION OF EXISTING ROOF BASED ON VARIOUS ROOF.
③	GLASS WIND-UP EXISTING SYSTEM.
④	ROOF ACCESS LADDER.
⑤	NEW 400 LAMINATE.



DESIGN DEVELOPMENT
DOCUMENTS

Drawing
SECOND FLOOR PLAN

Job No: 1410
Date: MARCH 26, 2015
Drawn By:
Checked By:
Sheet No:

1 SECOND FLOOR PLAN
1/2" = 1'-0"

SCALE 3/16" = 1'-0"

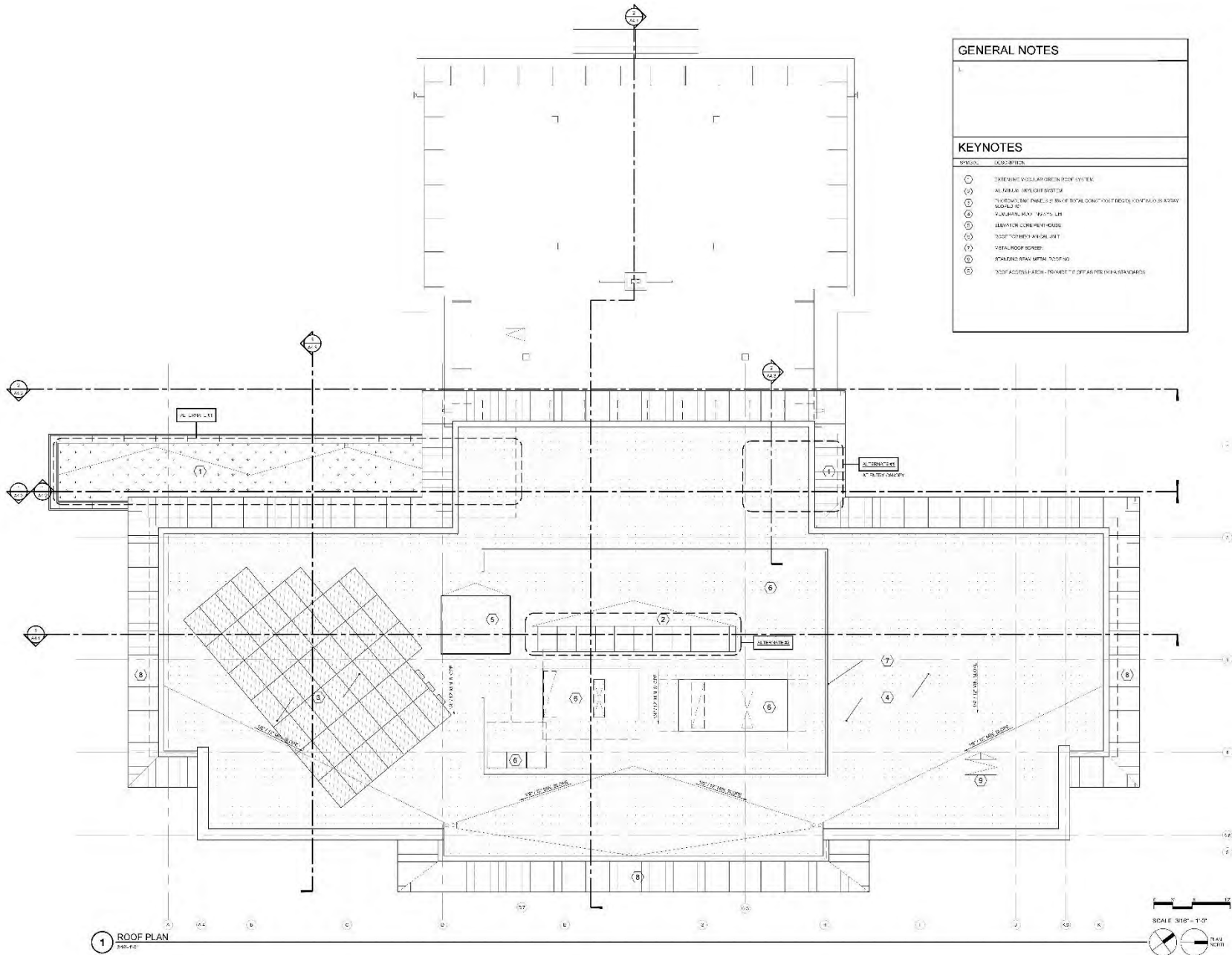


A2.2

GENERAL NOTES

KEYNOTES

SYMBOL	DESCRIPTION
○	EXTERNAL VOLLAN GREEN ROOF SYSTEM
①	ALUMINUM W/LOW GUSTOP
②	7" VOLLAN TAP PANELS 12" SQUARE (100% COVERS) 100% COVERS 100% COVERS
③	ALUMINUM W/LOW GUSTOP
④	ADDITIONAL CONCRETE ROOF
⑤	7" VOLLAN TAP PANELS 12" SQUARE
⑥	7" VOLLAN TAP PANELS 12" SQUARE
⑦	7" VOLLAN TAP PANELS 12" SQUARE
⑧	7" VOLLAN TAP PANELS 12" SQUARE
⑨	7" VOLLAN TAP PANELS 12" SQUARE



DESIGN DEVELOPMENT
DOCUMENTS

Drawing
ROOF PLAN

Job No: 1415
Date: MARCH 26, 2015
Drawn By:
Checked By:
Sheet No:

**OREGON CITY
PUBLIC LIBRARY
RENOVATION &
ADDITION**

OREGON CITY, OREGON

DESIGN DEVELOPMENT

DOCUMENTS

Drawing

EXTERIOR ELEVATIONS

Job No: 1410

Date: MARCH 26, 2015

Drawn By: -

Checked By: -

Sheet No:

A3.1

0 6 12

GENERAL NOTES

- THE POINT-TO-POINT RENOVATION OF THE EXISTING BUILDING IS A PART OF A LARGER PROJECT THAT INCLUDES THE RENOVATION OF THE EXISTING BUILDING AND THE ADDITION OF A NEW WING. THE EXISTING BUILDING IS A TWO-STORY BRICK BUILDING WITH A GABLE ROOF. THE NEW WING IS A TWO-STORY BRICK BUILDING WITH A FLAT ROOF. THE EXISTING BUILDING IS TO BE RENOVATED TO MEET THE REQUIREMENTS OF THE AMERICAN LIBRARY ASSOCIATION (ALA) STANDARDS. THE NEW WING IS TO BE DESIGNED TO COMPLEMENT THE EXISTING BUILDING AND PROVIDE A MODERN LIBRARY SPACE.
- THE NEW WING ADDITION IS TO BE DESIGNED TO COMPLEMENT THE EXISTING BUILDING AND PROVIDE A MODERN LIBRARY SPACE. THE NEW WING IS TO BE DESIGNED TO COMPLEMENT THE EXISTING BUILDING AND PROVIDE A MODERN LIBRARY SPACE.
- POINT-TO-POINT RENOVATION OF THE EXISTING BUILDING IS A PART OF A LARGER PROJECT THAT INCLUDES THE RENOVATION OF THE EXISTING BUILDING AND THE ADDITION OF A NEW WING. THE EXISTING BUILDING IS A TWO-STORY BRICK BUILDING WITH A GABLE ROOF. THE NEW WING IS A TWO-STORY BRICK BUILDING WITH A FLAT ROOF. THE EXISTING BUILDING IS TO BE RENOVATED TO MEET THE REQUIREMENTS OF THE AMERICAN LIBRARY ASSOCIATION (ALA) STANDARDS. THE NEW WING IS TO BE DESIGNED TO COMPLEMENT THE EXISTING BUILDING AND PROVIDE A MODERN LIBRARY SPACE.

KEYNOTES

- | SYMBOL | DESCRIPTION |
|--------|---|
| (1) | EXISTING BRICK BUILDING (1910) |
| (2) | EXISTING BRICK BUILDING (1910) - NEW WING |
| (3) | EXISTING BRICK BUILDING (1910) - NEW WING |
| (4) | EXISTING BRICK BUILDING (1910) - NEW WING |
| (5) | EXISTING BRICK BUILDING (1910) - NEW WING |
| (6) | EXISTING BRICK BUILDING (1910) - NEW WING |
| (7) | EXISTING BRICK BUILDING (1910) - NEW WING |
| (8) | EXISTING BRICK BUILDING (1910) - NEW WING |
| (9) | EXISTING BRICK BUILDING (1910) - NEW WING |
| (10) | EXISTING BRICK BUILDING (1910) - NEW WING |
| (11) | EXISTING BRICK BUILDING (1910) - NEW WING |
| (12) | EXISTING BRICK BUILDING (1910) - NEW WING |
| (13) | EXISTING BRICK BUILDING (1910) - NEW WING |
| (14) | EXISTING BRICK BUILDING (1910) - NEW WING |
| (15) | EXISTING BRICK BUILDING (1910) - NEW WING |

1 WEST ELEVATION

2 SOUTH ELEVATION

OREGON CITY, OREGON



1. THE FIRST PART OF THE DEBATE IS ABOUT THE NATIONAL DEBTS OF THE COUNTRIES IN THE
THE STATE OF ACHTUNG. IN RECENT YEARS, RESEARCHERS HAVE FOUND THAT THE TOTAL
DEBT OF A COUNTRY IS A FUNCTION OF THE COUNTRY'S GDP. THE COUNTRY'S GDP
/GROSS DOMESTIC PRODUCT/ IS A FUNCTION OF THE COUNTRY'S GDP. THE COUNTRY'S GDP
IS A FUNCTION OF THE COUNTRY'S GDP. THE COUNTRY'S GDP IS A FUNCTION OF THE COUNTRY'S GDP.
2. THE NEW DATA SHOWS THAT THE COUNTRY'S GDP IS A FUNCTION OF THE COUNTRY'S GDP.
THE COUNTRY'S GDP IS A FUNCTION OF THE COUNTRY'S GDP. THE COUNTRY'S GDP IS A FUNCTION OF THE COUNTRY'S GDP.
THE COUNTRY'S GDP IS A FUNCTION OF THE COUNTRY'S GDP. THE COUNTRY'S GDP IS A FUNCTION OF THE COUNTRY'S GDP.
3. THE NEW DATA SHOWS THAT THE COUNTRY'S GDP IS A FUNCTION OF THE COUNTRY'S GDP.
THE COUNTRY'S GDP IS A FUNCTION OF THE COUNTRY'S GDP. THE COUNTRY'S GDP IS A FUNCTION OF THE COUNTRY'S GDP.
THE COUNTRY'S GDP IS A FUNCTION OF THE COUNTRY'S GDP. THE COUNTRY'S GDP IS A FUNCTION OF THE COUNTRY'S GDP.

[illegible]

Drawing

Job No. 1415

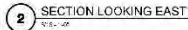
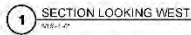
Date: MARCH 25, 2015

Drawn By:

Checked By: _____

A3.2

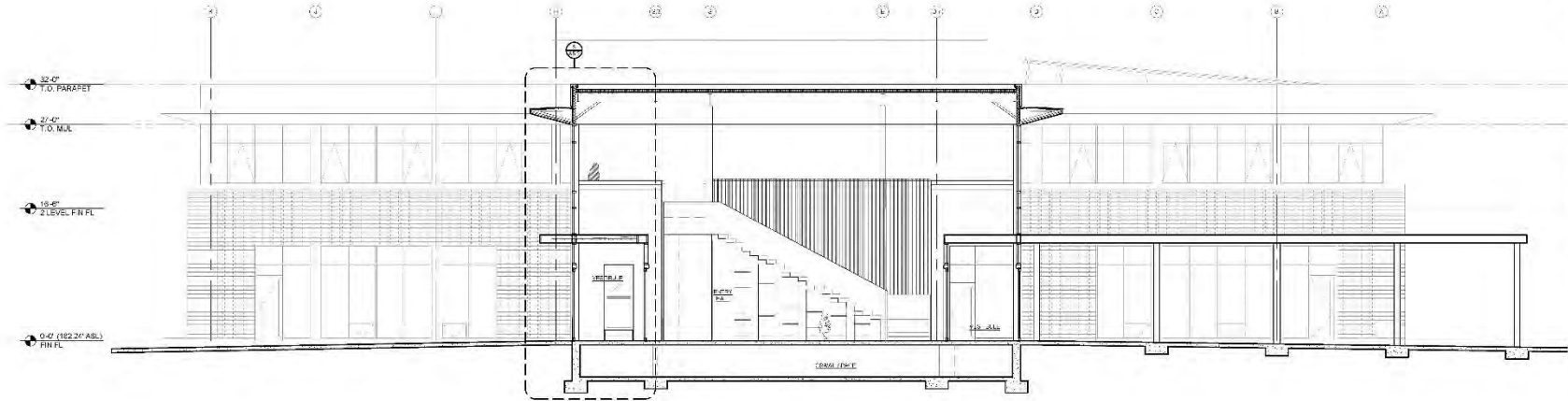
OREGON CITY, OREGON

DESIGN DEVELOPMENT
DOCUMENTS

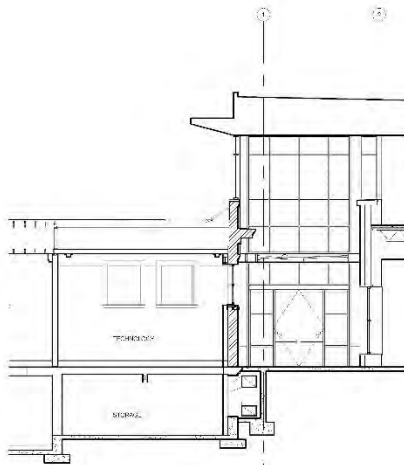
Job No. 1415
Date, MARCH 25, 2015
Drawn By: -
Checked By: -
Sheet No.

OREGON CITY PUBLIC LIBRARY RENOVATION & ADDITION

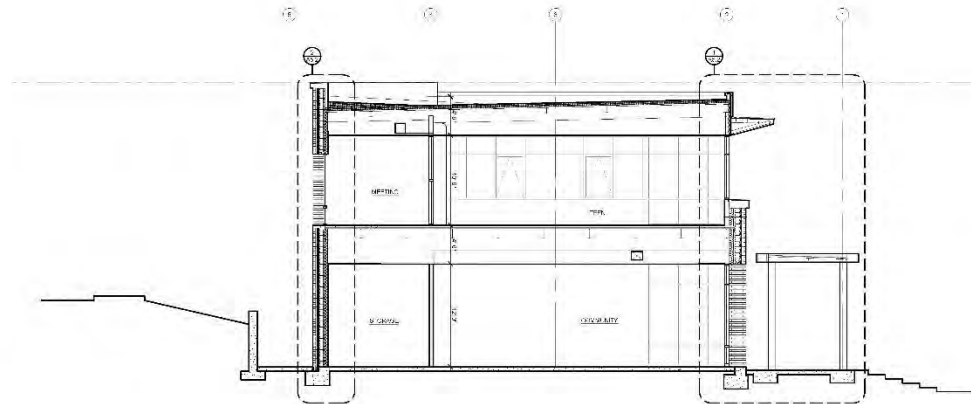
OREGON CITY, OREGON



1 SECTION LOOKING EAST
210-103



2 SECTION AT VESTIBULE
210-103



3 SECTION LOOKING SOUTH
210-103

DESIGN DEVELOPMENT
DOCUMENTS

Drawing
BUILDING SECTIONS

Job No. 1415
Date: MARCH 26, 2015
Drawn By:
Checked By:
Sheet No.