



Oregon City Civic Improvement Trust Tourism Grant Exit Report

This form is to be filled out within 30 days of completion of the OCCIT grant project. Please limit responses to the space provided. If available, please attach any event photo and any promotional material samples (advertisements, flyers, posters, etc.)

When complete please submit to Michele Beneville at City Hall, 625 Center Street. Failure to provide this final exit report will make project Sponsor ineligible for future OCCIT grants.

Project Title: **MOOT's "Latourette Park" Improvement: McCullough Obelisk Scenic Plaza**

Organization: **Clackamas County Historical Society**

Project Coordinators: Terry Judkins/R.E. Pennington Phone: 503.655.5574

Email: [Programs @ClackamasHistory.Org](mailto:Programs@ClackamasHistory.Org)

Brief project description: Historic preservation of key architectural elements of the original 1922 Arch Bridge (spanning Oregon City and West Linn) was achieved by moving and erecting 2 obelisk-style pylons designed by Conde McCullough, Oregon's "Master Bridge Builder," onto the gravel site overlooking Willamette Falls at the Museum of the Oregon Territory ("Latourette Park.") Experts constructed a bench between them, and they were rigged with electrical lighting - to create a day/night seated scenic mini-plaza. A bike rack was also installed, as was an interpretive plaque cast in bronze to explain the significant relationship of the salvaged structures to Oregon City's history.

- 1. Description of project accomplishments:** Aesthetically, this impressively solid concrete project succeeded in meeting our architect's aims to "echo the original character of the Arch Bridge and the intent of McCullough." It has already resulted in happy families taking a rest from their travels along Highway 99E. Lured up to the museum by a large, new "FREE – Today!" banner visible from the Willamette Falls Tumwater Drive turnout and observation point, families are curious about the structure. Whether they are attracted by the pillars or the prospect of using a restroom is uncertain, but we do know this new wave of highway 99E visitors get an introduction to Oregon City history from our docents, and most tour the museum, pick up brochures and maps of area attractions, and afterwards often can be found sitting on the plaza bench, while their children enjoy standing and/or climbing on the sturdy platforms created by this project, to get the highest and best view of the Falls. Elements like this "add up" to help brand the look, motif, and feel of Oregon City, enticing visitors to "linger longer" and to remember their passage through our unique town.

2. Measures of performance (i.e. number of people served; effect of the project on tourism):

Return on Investment (ROI) data has not yet been gathered in quantity, as the project has only been complete for a few weeks. Dedication of the Plaza occurred on June 26th, 2014. Of 41 families/groups who volunteered contact information in June 2014 – since project completion - 16 were from out of state, and an additional 19 were from cities other than Oregon City. Only 12.5 % claimed to be Oregon City residents. Compared to last summer's statistics, this seems to indicate an increasing proportion of drive-by travelers noticing and stopping at the Museum.

3. List additional sponsors of the project:

Todd Iselin, Principal Architect, Oregon City

Oregon Community Foundation (Dedication BBQ Reception)

Krahmer Gehlin Assoc.– Consulting Engineers (Structural Footing Design & Bedrock Analysis)

Oregon Department of Transportation – Obelisk removal, transportation, delivery, donation

And anonymous donors (concrete, concrete truck, etc.) allowing us to return much of the approved funding to the granting organization (OCCIT.)

4. How were OCCIT grant funds spent?

Purchase of Bike Rack, Light Fixtures

Electrical Contractor Work

Ditch-Digging (electrical conduits X 20 feet)

Concrete Patio Pour and Finishing

Bronze Plaque Casting

Manual labor, miscellaneous (see below)

5. Final budget:

Suggested List (not inclusive)	(A) OCCIT Tourism Grant Dollars	(B) Matching Funds (Cash)	(C) In-Kind Matching	(D) Total
Personnel Services (Multiple bids, communications & Project Supervision x 80 hours)	\$0	\$0	\$1,600	\$1,600
Project Administration costs (clerical, advertising, graphics, printing, postage, salaried position x 32 hours)	\$0	\$640	\$0	\$640
Materials -plywood & rebar forms, 1922 Obelisk Plyons, cement for new bases & seating	\$869.58	\$0	\$4,970.42	\$5840
Equipment (Concrete Truck, crane rental, backhoe, & moving obelisks)	\$0	\$0	\$1,535	\$1,535
Event Costs: BBQ Dedication	\$0	\$154.31	\$0	\$154.31
Construction Costs: Manual Labor (Ditch Digging, Ditch Refill, Form Building, metal plate manufacture, gravel removal, concrete prep, bike rack installation, light installation, concrete pour, finishing, conduits, etc.)	\$3,965	\$300	\$1835	\$6100
Licensed Electrical Contractor	\$1700	\$300	\$0	\$2,000
<i>Additional Expenses (list)</i>				
Outdoor Light Sconces x 4	\$191.88	\$0	\$0	\$191.88
"S" Curve 6-Bike Rack	\$100.03	\$0	\$0	\$100.03
Bronze Interp. Plaque+shipping	\$417.45	\$0	\$0	\$417.45
Architectural Design & Plans	\$0	\$0	\$2,500	\$2,500
Structural Engineering	\$0	\$925.17	\$0	\$925.17
TOTALS	\$7,243.94	\$2,319.48	\$12,440.42	\$22,003.84



211 Tumwater Drive
off Hwy 99 E
Oregon City, OR 97222

THE MUSEUM OF THE OREGON TERRITORY



Presentation
with PSU
Jeffersonian
Scholar
Wendy Willis

Town Hall
Style
Open
Discussion

Bring your
ideas!



The Truths We Hold

Lessons & Poetry of the
Declaration of Independence

www.clackamashistory.org 503.655.5574





FOR IMMEDIATE RELEASE – June 16, 2014

Contact: Roxandra E. Pennington- 503.655.5574

Photo Use Courtesy of CCHS/R.E.Pennington. Shown is OCCIT funded Obelisk viewpoint at MOOT

**"The Truths We Hold: Poetry and Lessons of the
Declaration of Independence" and Viewpoint
Dedication at MOOT**



"If the Constitution of the United States speaks to the head, the Declaration of Independence speaks to the heart and the body; if the Constitution is prose, the Declaration is poetry." These are the words of Wendy Willis, former Federal Public Defender and Law Clerk to the Supreme Court, also a poet and wordsmith, and back by request to speak at the Clackamas County Historical Society's Annual Meeting on June 26th, at 7 p.m. in Oregon City.

Ms. Willis' interactive Conversation Project program, "The Truths We Hold: The Poetry and Lessons of the Declaration of Independence" is offered along with free museum admission and refreshments in honor of Independence Day by sponsors Oregon Humanities and Portland General Electric.

Attendees are invited to arrive as early as 6 p.m. to tour the Museum of the Oregon Territory's 2014 exhibits and share in an outdoor dedication barbeque for the new Conde McCullough Obelisk Bench Viewpoint overlooking Willamette Falls.

"Many partners volunteered skills and materials to make this stunning new falls view contemplation site possible, from Architect Todd Iselin, CCHS Vounteer project manager Terry Judkins, and the Oregon Department of Transportation (donors of materials from McCullough's original 1922 Arch Bridge), to concrete artisans Bill McCommon, Everado Saldana, David Salisbury, and Larry Weston. We also wish to thank Joe Poole and Wayne Scacco of A36 Structures and Full House Electric. Most importantly, Oregon City's Civic Improvement Trust provided funding in part for this unique salvage effort and installation," states a Clackamas County Historical Society representative.

"Truths We Hold" speaker Wendy Willis, a national leader in civic engagement, invites community members to come and openly "discuss what the Declaration of Independence might offer us as 21st century Americans, what it means to have a right to pursue happiness, and how we might use the Declaration to improve the state of our Republic." Willis currently serves as Executive Director of the Policy Consensus Initiative, a national non-profit organization housed at Portland State University and devoted to improving collaborative, democratic governance. Her first book of poems, "Blood Sisters of the Republic," was released in 2012.

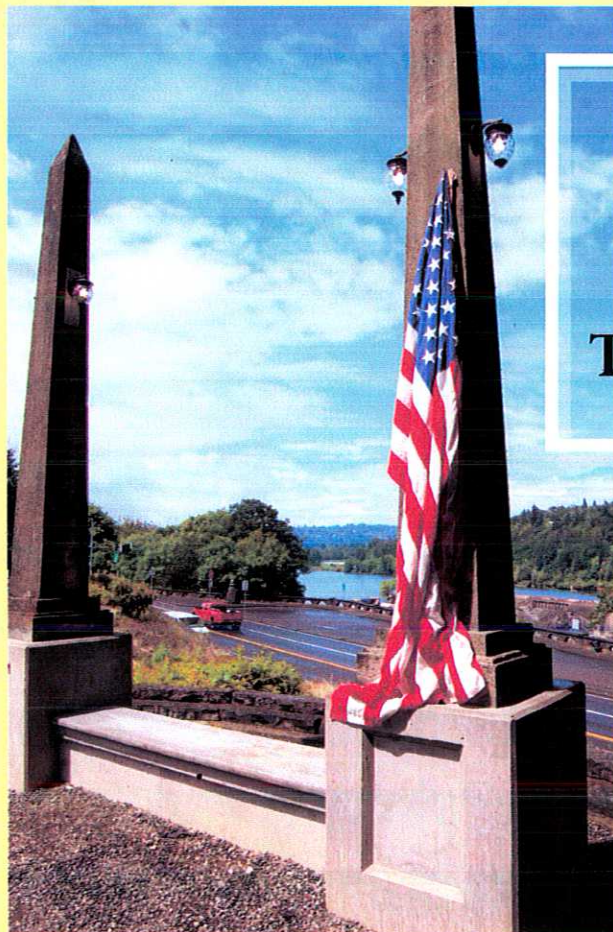
In this and other free programs, Oregon Humanities aims to engage community members in thoughtful, challenging conversations about ideas critical to our daily lives, our communities, and our state's future. Oregon Humanities is an independent, nonprofit affiliate of the National Endowment for the Humanities and a partner of the Oregon Cultural Trust. More information about Oregon Humanities' programs, including Think & Drink, Humanity in Perspective, Idea Lab, Public Program Grants, and Oregon Humanities magazine, can be found at oregonhumanities.org.

The Museum of the Oregon Territory is located off Hwy 99E, overlooking Willamette Falls, at 211 Tumwater Drive, Oregon City, 97045. Visit www.clackamashistory.org for more information.

211 Tumwater Drive
off Hwy 99 E
Oregon City, OR 97222

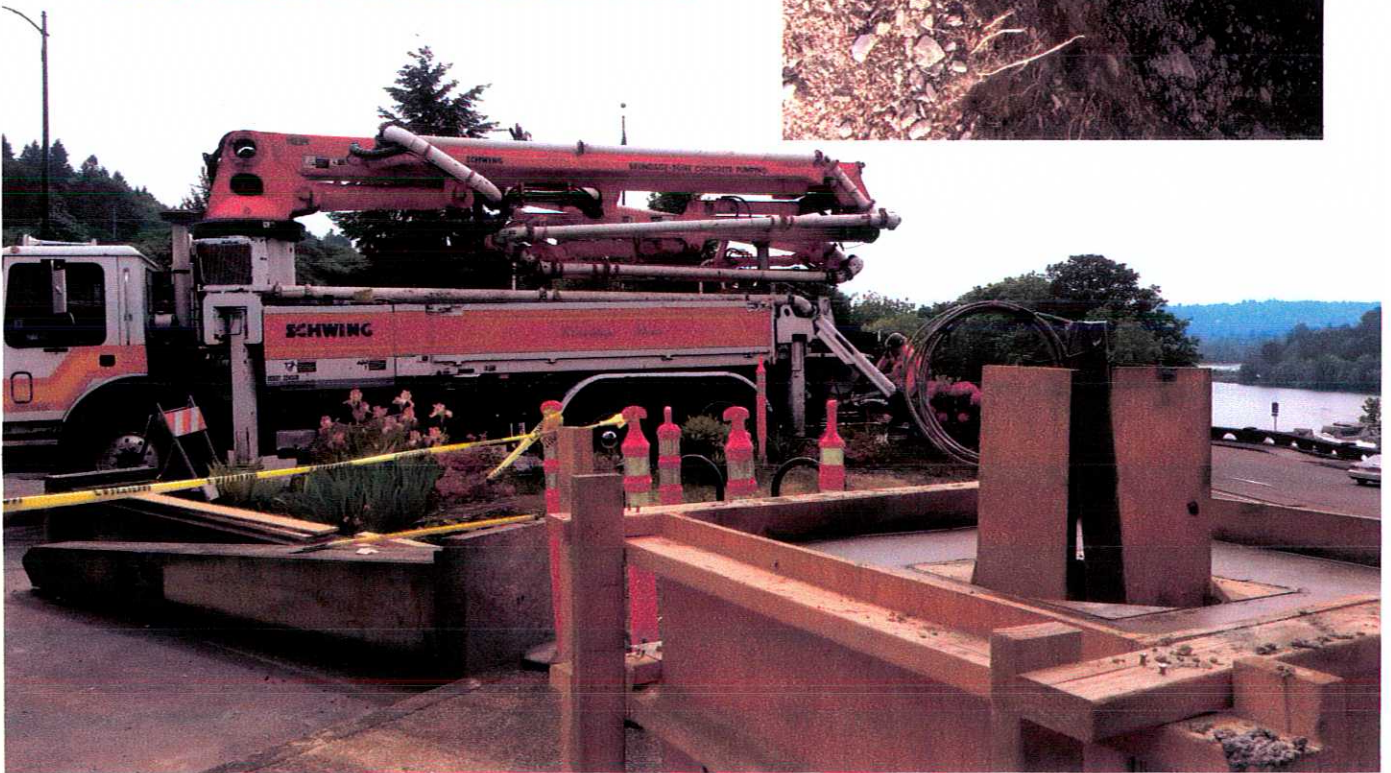


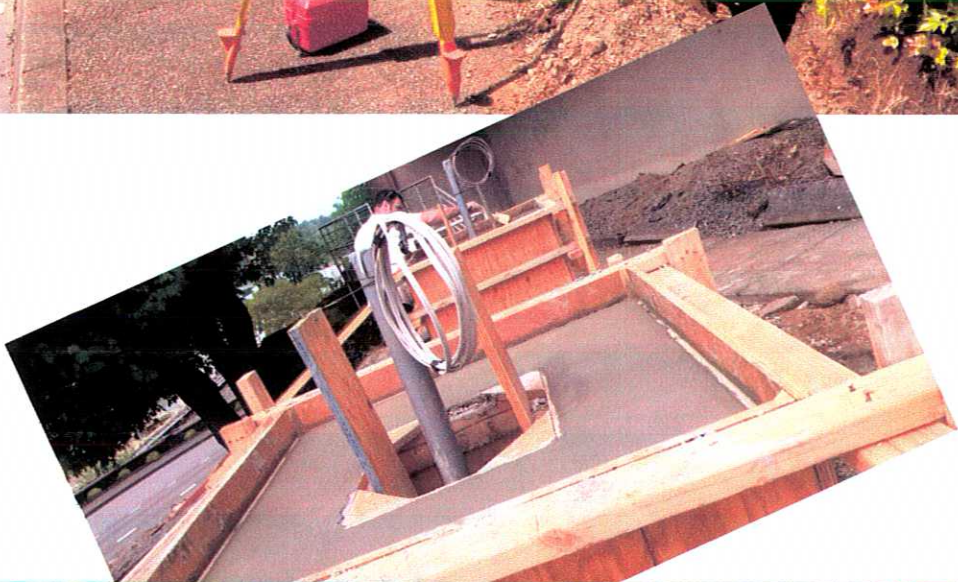
**Obelisk
Project '14**



**MUSEUM
OF THE
OREGON
TERRITORY**

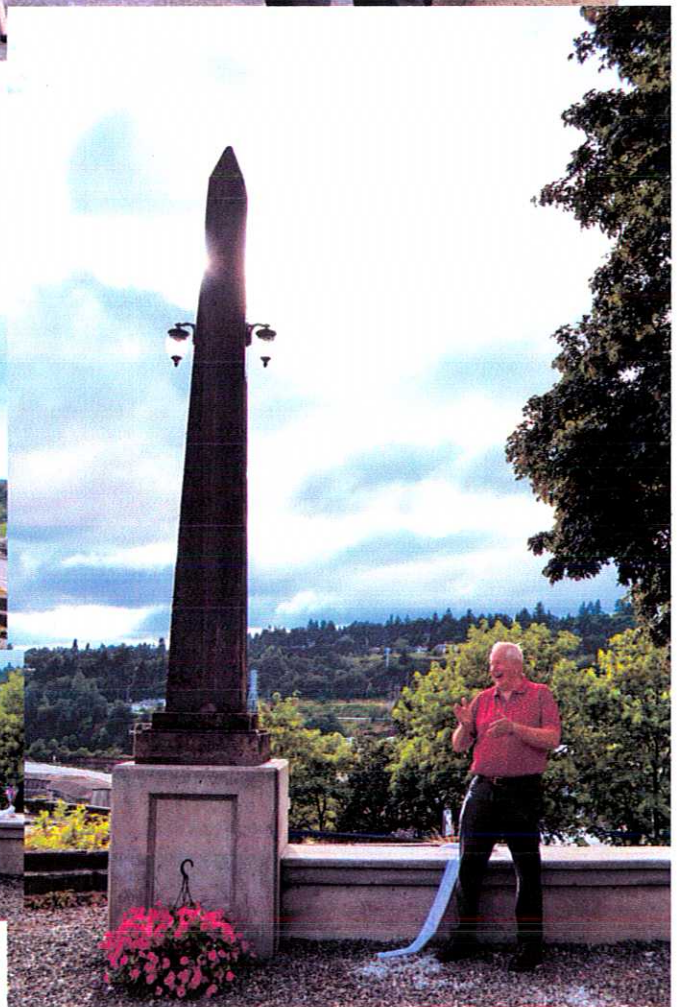
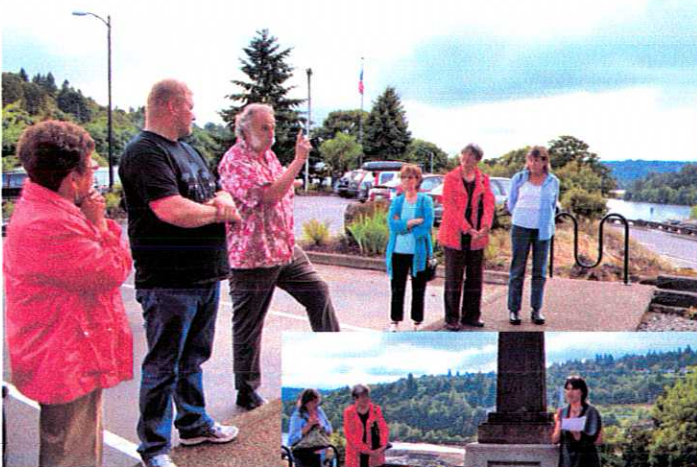








Dedication Barbeque,
6/26/2014



THESE OBELISKS WERE SALVAGED FROM THE ORIGINAL 1922 ARCH BRIDGE THAT SPANNED THE WILLAMETTE RIVER BETWEEN OREGON CITY AND WEST LINN.

THEY WERE DONATED TO THE CLACKAMAS COUNTY HISTORICAL SOCIETY BY THE OREGON DEPARTMENT OF TRANSPORTATION (ODOT) IN 2013, FOLLOWING THE BRIDGE'S RESTORATION.

OBELISKS, AN ANCIENT EGYPTIAN ARCHITECTURAL MOTIF, WERE AN ART DECO "SIGNATURE" STYLE ACCENT OF OREGON'S MASTER BRIDGE BUILDER, ENGINEER CONDE B. MCCULLOUGH (B.1887 - D.1946).

MCCULLOUGH DESIGNED HUNDREDS OF BRIDGES FOR ODOT BETWEEN 1919-1936, NOTED FOR BOTH THEIR ELEGANCE AND STRUCTURAL EFFICIENCY. MANY GRACE THE SCENIC OREGON COAST HIGHWAY, U.S. ROUTE 101.

IN 2005, THE ARCH BRIDGE WAS ADDED TO THE NATIONAL REGISTER OF HISTORIC PLACES. IT IS LOCATED JUST DOWNSTREAM FROM WILLAMETTE FALLS, THE NATION'S SECOND LARGEST WATERFALL, BY VOLUME.