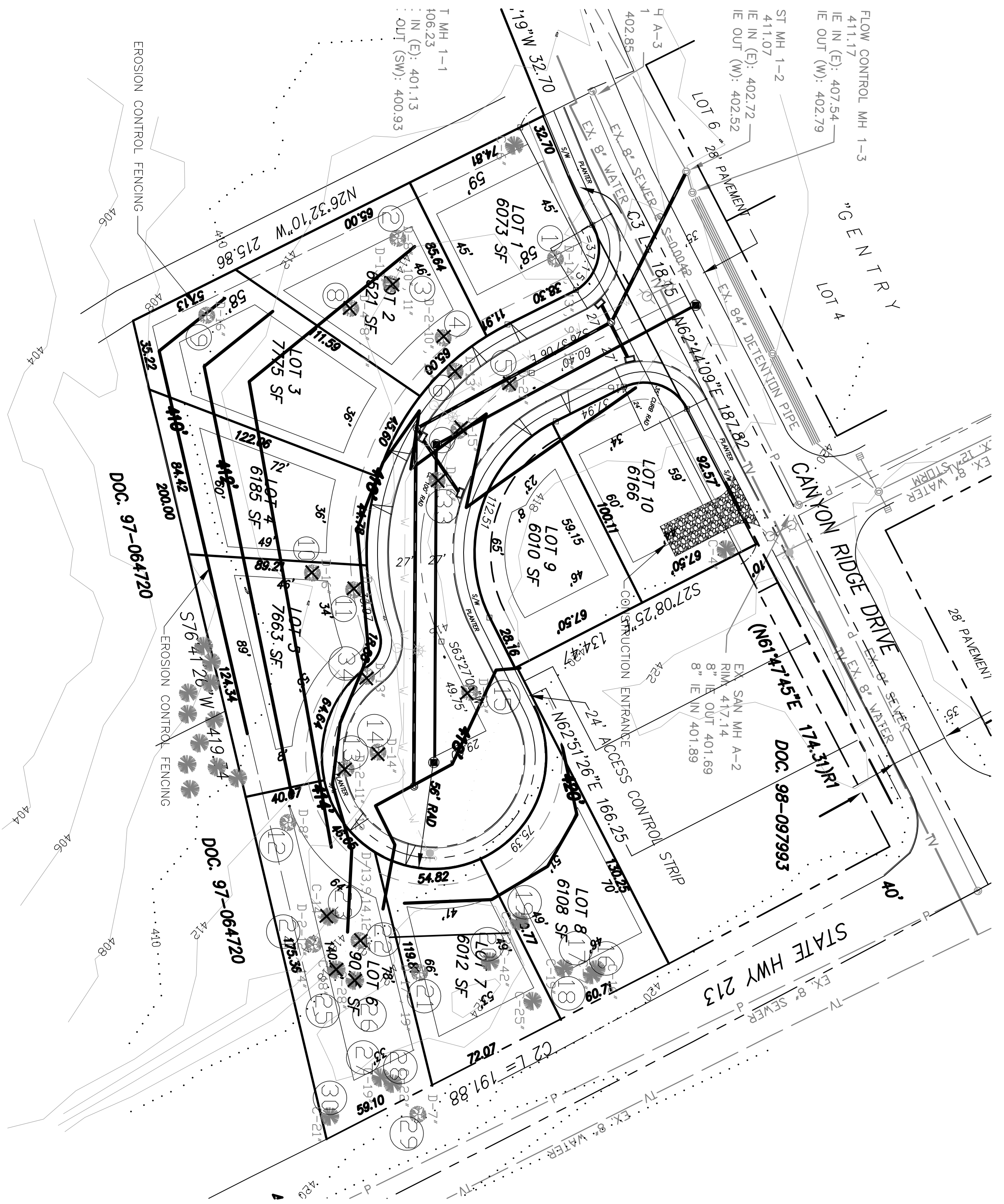


PRELIMINARY TREE REMOVAL PLAN



EXISTING TREE INVENTORY

- | | |
|----------------------|--------------------------|
| 1. 13/14" ASH | 15. 13" MAPLE X |
| 2. 8/10/11" ASH | 16. 16" FIR |
| 3. 2-10" ASH X | 17. 7" FIR |
| 4. 2-10" ASH X | 18. 19" FIR |
| 5. 21" MAPLE X | 19. 33" FIR |
| 6. 13" MAPLE X | 20. 42" FIR |
| 7. 15" MAPLE X | 21. 17", 19" MAPLE X |
| 8. 4-8", 7" ASH X | 22. 9/11/12/13/14" ASH X |
| 9. 16" MAPLE | 23. 14" FIR X |
| 10. 16" MAPLE | 24. 2-12" MAPLE |
| 11. 14" MAPLE X | 25. 18" FIR X |
| 12. 8" HAWTHORNE | 26. 28" FIR X |
| 13. 2-11", 12" ASH X | 27. 19" FIR |
| 14. 14" MAPLE X | 28. 22" FIR |
| | 29. 7" FIR |
| | 30. 21" FIR |
| | 31. 6" SPRUCE |
| | 32. 4" SPRUCE |
| | 33. 16" MAPLE X |
| | 34. 13" MAPLE X |
- ☒ TREES TO BE REMOVED

