

TREE REPLACEMENT PLAN

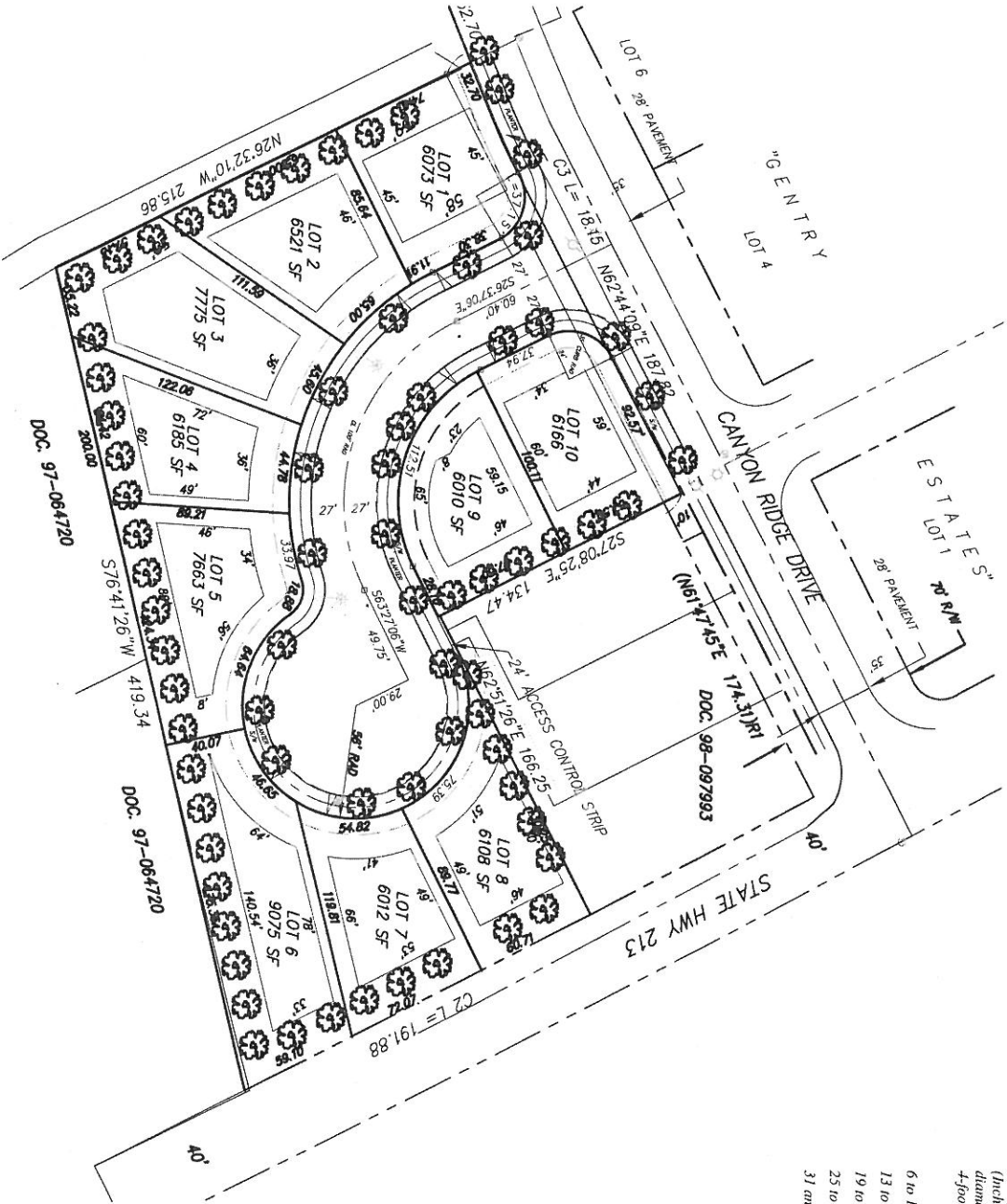


Table 16.12.310-1
Tree Replacement Requirements

Size of tree removed (Inches in diameter at the 4-foot height)	Number of trees to be planted.
6 to 12	12 trees
13 to 18	28 trees
19 to 24	3 trees
25 to 30	4 trees
31 and over	0 trees

