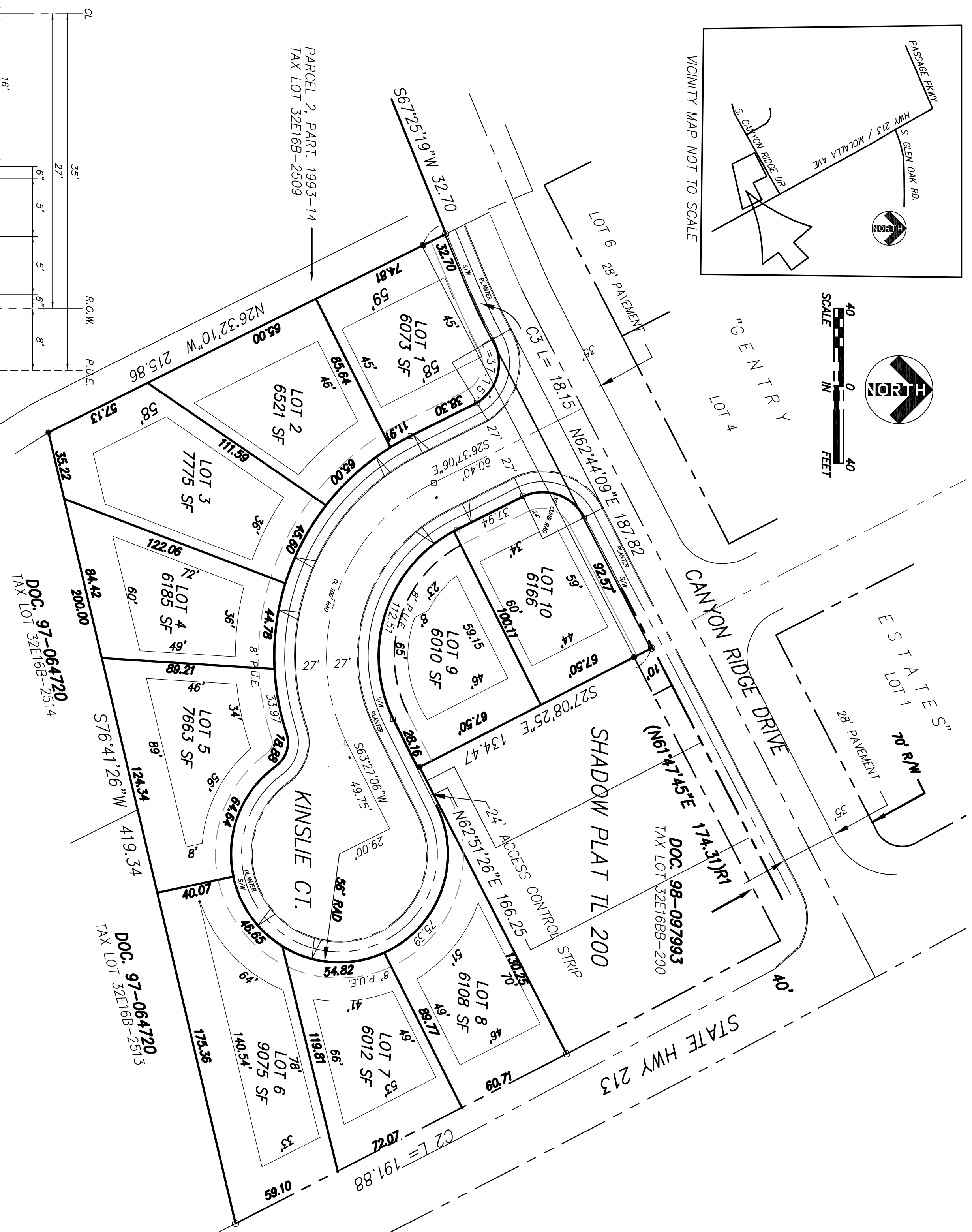
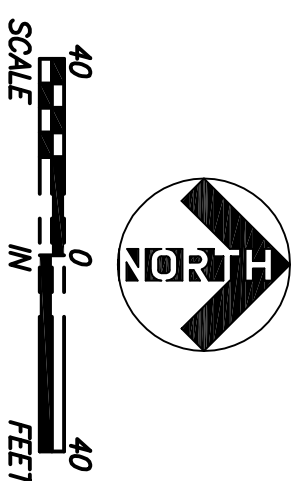
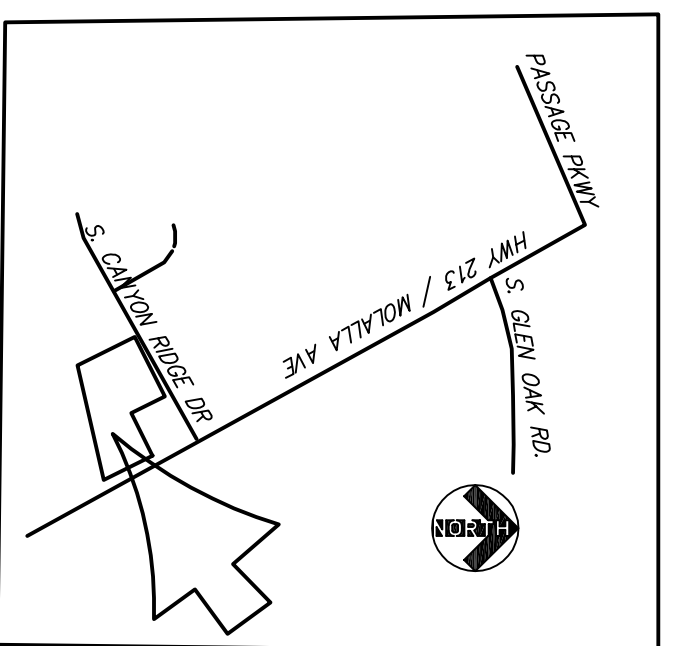


# PRELIMINARY MASTER PLAN

KINSLIE HEIGHTS  
 IN THE N.W. 1/4 OF SECTION 16, T.35S, R.2E., W.M.  
 CITY OF OREGON CITY, CLACKAMAS COUNTY, OREGON

MARCH 22, 2013



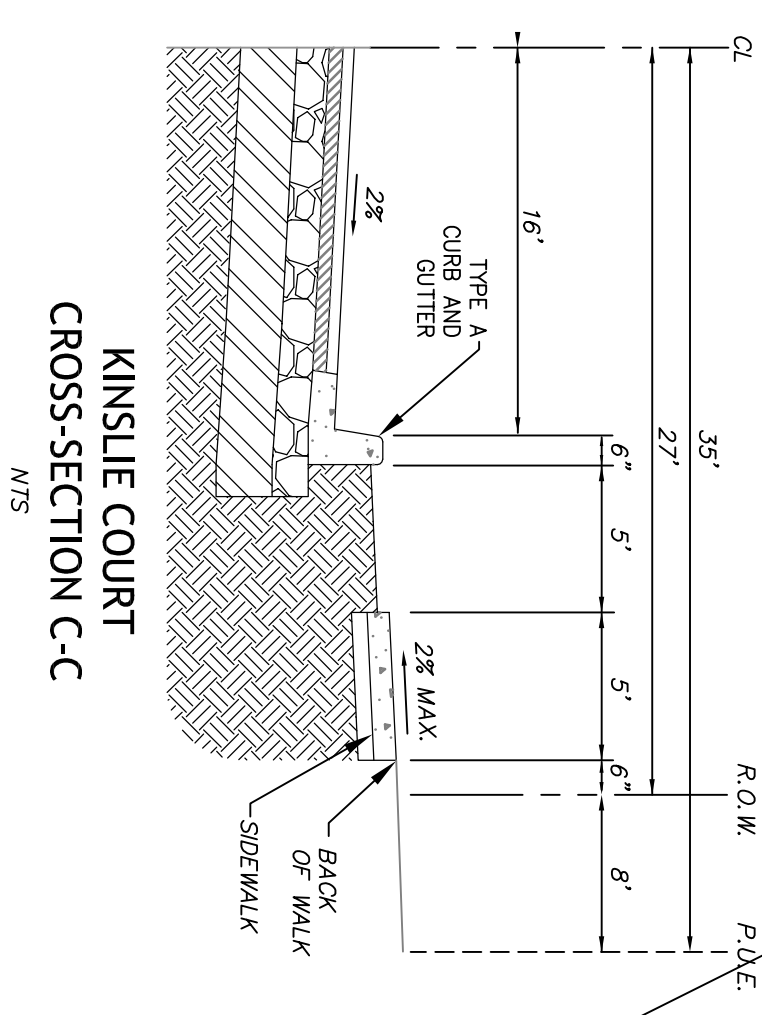
EXISTING ZONING: R-10  
 SIZE: 2.04 ACRES  
 JURISDICTION: CITY OF OREGON  
 PROPOSED ZONING: R-6  
 AVERAGE LOT SIZE: 16,000 SF  
 LOT SETBACKS-  
 FRONT: 10'  
 GARAGE: 20'  
 SIDE: 9' AND 5'  
 STREET SIDE: 15'  
 REAR: 20'  
 MAX HEIGHT: 20'  
 35' RAD CURB RETURNS

LEGEND:

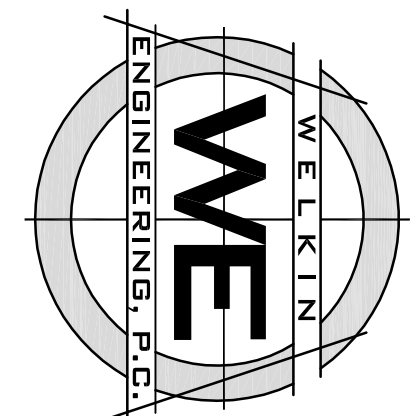
	FIRE HYDRANT		STORM DRAIN MANHOLE
	WATER METER		CATCH BASIN
	BLOWOFF		SANITARY SEWER LINE
	STORM DRAIN LINE		SANITARY SEWER MANHOLE
	TREE (TO REMAIN)		WATER VALVE
	WATER MAIN		SILT FENCE
	EXISTING LUMINAIRE		LUMINAIRE

SHEET INDEX

1	MASTER PLAN
2	EXISTING CONDITIONS
3	GRADING PLAN
4	UTILITY PLAN
5	EROSION CONTROL
6	PRELIMINARY PLAT
7	TREE REMOVAL PLAN
8	STREET TREE & PRESERVATION PLAN



KINSLIE COURT  
 CROSS-SECTION C-C  
 N.T.S.



ENGINEERING  
 SURVEYING • PLANNING  
 25260 SW Parkway Ave., Suite G  
 Wilsonville, OR 97070-6627  
 Tel: (503) 598-1866  
 Fax: (503) 598-1888  
 ekc@welkinpc.com  
 www.WelkinPC.com