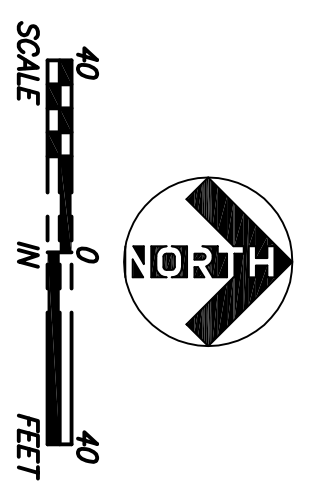
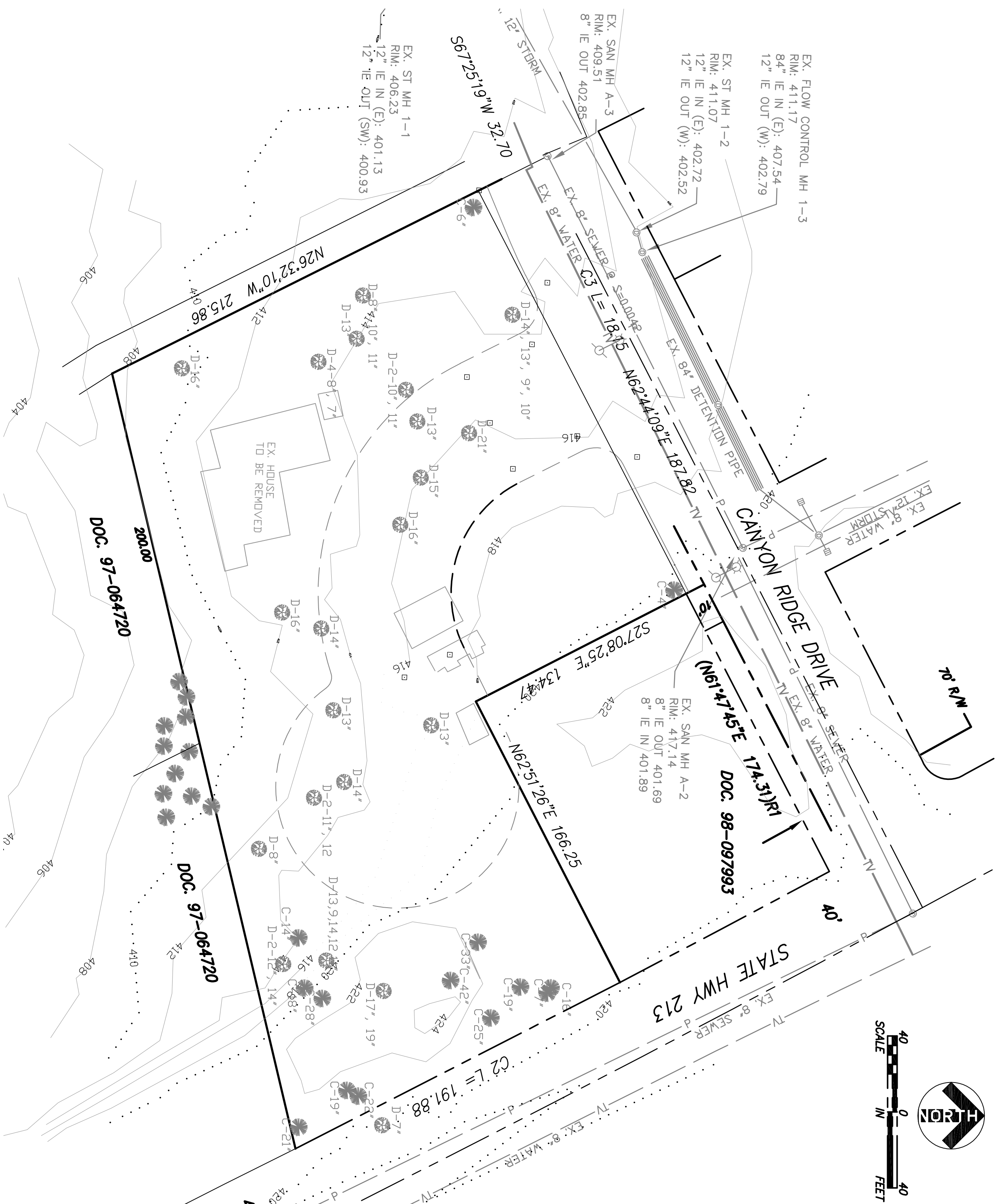


EXISTING CONDITIONS

KINSLE HEIGHTS
 IN THE N.W. 1/4 OF SECTION 16, T.3S., R.2E., W.M.
 CITY OF OREGON CITY, CLACKAMAS COUNTY, OREGON
 MARCH 20, 2013



- LEGEND**
- SET 5/8" X 30" IRON ROD W/YPC INSCRIBED "WELKIN ENGINEERING, P.C."; SET ON _____
 - FOUND MONUMENT AS NOTED.
 - W/YPC WITH YELLOW PLASTIC CAP
 - (R) DENOTES RADIAL BEARING
 - DOC. DOCUMENT
 - DLC DONATION LAND CLAIM NO. NUMBER
 - N/S NOT TO SCALE
 - C/R COMPUTED FROM RECORD
 - DLC DONATION LAND CLAIM
 - R1 SN 11436
 - R2 "CANYON RIDGE"
 - R3 "GENTRY ESTATES"
 - R4 SN 2010-102
 - R5 SN 2004-223
 - D1 DOC. NO. 2010-012643
 - ▬ DETENTION PIPE

- LEGEND:**
- ⊙ STORM DRAIN MANHOLE
 - CATCH BASIN
 - SANITARY SEWER LINE
 - ⊙ SANITARY SEWER MANHOLE
 - TREE (TO BE REMOVED)
 - WATER VALVE
 - WATER MAIN
 - SILT FENCE
 - ⊙ EXISTING LUMINAIRE
 - ⊙ LUMINAIRE