

# CLAIRMONT WAY

## 2013 CLAIRMONT WATERLINE REPLACEMENT AND ROADWAY RECONSTRUCTION

OREGON CITY, OREGON  
(City File No. : CI 12-012)

### ENGINEER

HARPER HOUF PETERSON RIGHELLIS INC.  
CONTACT: KEN VALENTINE  
205 SE SPOKANE STREET, SUITE 200  
PORTLAND, OREGON 97202  
(503) 221-1131

### UTILITY CONTACTS

OREGON CITY PUBLIC WORKS  
PROJECT MANAGER: JOHN BURRELL (503) 657-8241  
WATER DIVISION CONTACT: ELI DEBERRY  
SANITARY AND STORM DIVISION  
CONTACT: ERIC HAND  
STREET DIVISION CONTACT: KEVIN HANKS  
(503) 657-0891

PORTLAND GENERAL ELECTRIC  
209 WARNER MILNE ROAD  
OREGON CITY, OR 97045  
CONTACT: LARRY GRIGGS  
Larry.Griggs@pgn.com  
(503) 742-8417

NW NATURAL  
220 NW SECOND AVE.  
PORTLAND, OR 97209  
CONTACT: ROBERT KELLER  
rmk@nwnatural.com  
(503) 226-4211 x4361 OFFICE  
(503) 708-3699 CELL

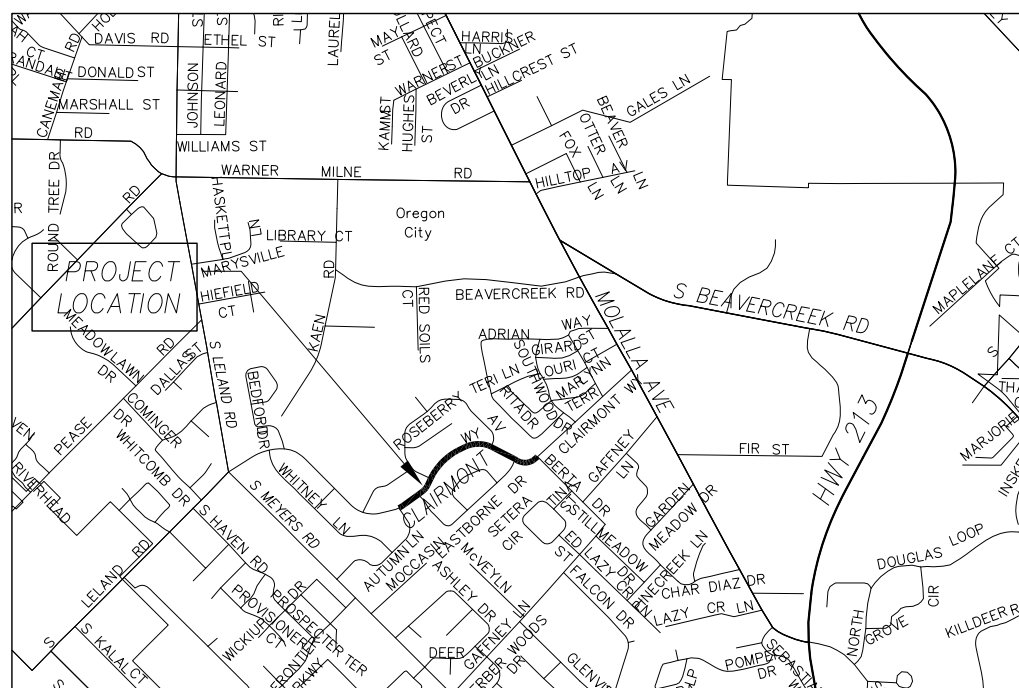
CENTURY LINK  
8021 SW CAPITOL HILL ROAD, ROOM 110  
PORTLAND, OR 97219  
CONTACT: SCOTT MILLER  
Scott.Miller4@centurylink.com  
(503) 242-4144

COMCAST  
COMCAST WPD  
10831 SW CASCADE AVE.  
TIGARD, OR 97223  
CONTACT: KENNETH WILLS, CONSTRUCTION COORDINATOR 3  
(503) 596-3767 OFFICE  
(503) 793-9981 CELL  
Kenneth\_wills@cable.comcast.com

CLACKAMAS COUNTY SIGNAL OPERATIONS  
CONTACT: KENT BAUMAN  
(503) 650-3735

BEAVER CREEK TELEPHONE  
CONTACT: RON WASCH  
(503) 632-6959

### VOLUME 2 OF 2



VICINITY MAP  
NTS



### SHEET INDEX

- 1 COVER SHEET
- 2 GENERAL NOTES
- 3 TYPICAL SECTION
- 4-8 PAVING PLAN & PROFILE
- 9-13 WATERLINE PLAN & PROFILE
- 14-18 WATERLINE DETAILS

### NOTE:

INFORMATION SHOWN IS BASED ON SURVEY AND THE CITY'S AVAILABLE GIS DATA BASE. CONTRACTOR SHALL VISIT SITE AND VERIFY ALL EXISTING CONDITIONS PRIOR TO BEGINNING CONSTRUCTION. SEE GENERAL NOTES, SHEET 2 FOR ADDITIONAL REQUIREMENTS.



REGISTERED PROFESSIONAL ENGINEER  
50,102  
ORIGINAL SIGNED BY  
KENNETH K. VALENTINE  
JULY 13, 1999  
EXPIRES: 06/30/  
PROJECT NUMBER: CI-12-012  
PROJECT MANAGER: JOHN BURRELL

Harper Houf Peterson Righellis Inc.  
DATE: APR 2013  
SCALE: 1" = 20'

CLAIRMONT WAY WATERLINE AND 2013 PAVEMENT REHABILITATION  
(CI 12-012)  
COVER SHEET

NO.	DATE	REVISIONS

DRAWING NUMBER:

1

**BID SET**

**Harper Houf Peterson Righellis Inc.**  
ENGINEERS\*PLANNERS  
LANDSCAPE ARCHITECTS\*SURVEYORS  
205 SE Spokane Street, Suite 200, Portland, OR 97202  
phone: 503.221.1131 www.hhpr.com fax: 503.221.1171