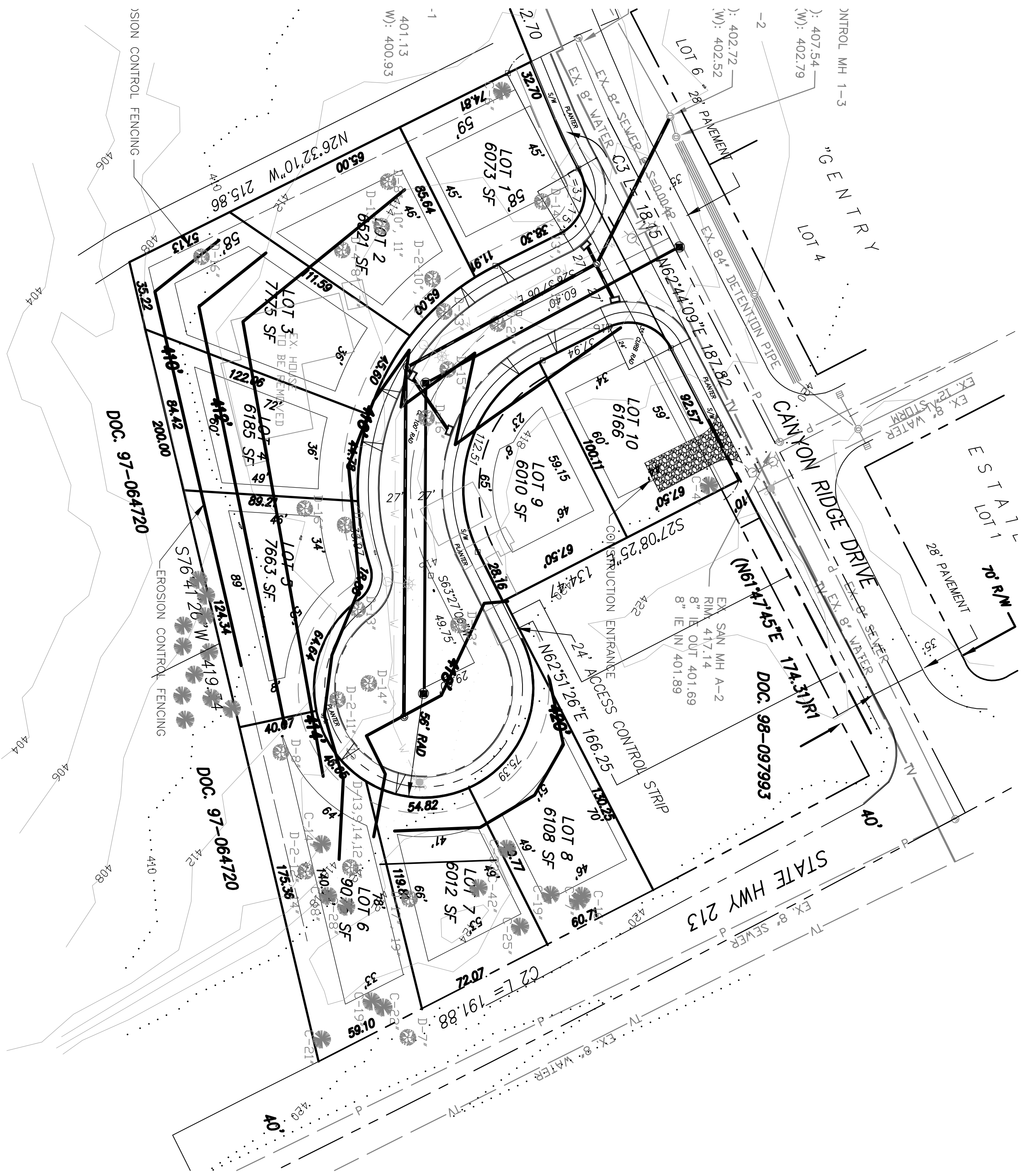


PRELIMINARY GRADING

KINSLIE HEIGHTS
 IN THE N.W. 1/4 OF SECTION 16, T.35., R.2E., W.M.
 CITY OF OREGON CITY, CLACKAMAS COUNTY, OREGON
 MARCH 20, 2013



LEGEND:

	FIRE HYDRANT		STORM DRAIN MANHOLE
	WATER METER		CATCH BASIN
	BLOWOFF		SANITARY SEWER MANHOLE
	STORM DRAIN LINE		SANITARY SEWER MANHOLE (TO BE REMOVED)
	TREE (TO REMAIN)		WATER VALVE
	WATER MAIN		SILT FENCE
	EXISTING LUMINAIRE		LUMINAIRE